

Data Source:
 SA Water Structures supplied by SA Water; Water Main Crossing Watercourse derived from data supplied by SA Water and Mt Barker City Council; Substations supplied by ETSA; Emergency and Cultural Features, Roads, Contours (Aerometrex), Council Stormwater Network and Cadastre supplied by DC of Mt Barker; Parks and Reserves supplied by Dept of Environment and Heritage (DEH); Railways supplied by Primary Industries and Resources SA (PIRSA) Freeway digitised by AWE; Watercourse and Railway edited to improve their spatial precision; Study Area supplied by AWE; Flood data supplied by Water Technology.



LEGEND

- Bridges and Culverts
- Substations
- SA Water Structure
- Water Main Crossing Watercourse
- Emergency and Cultural Features:**
 - Hospital
 - Police Station

- CFS
- Mount Barker Council Depot
- Mount Barker Town Hall
- Sports Club
- Mount Barker Cemetery
- Mount Barker Library
- Mount Barker Showgrounds
- Mount Barker Tourist Park
- Laratinga Wetlands

- Contour (5 metre interval):**
 - Index Contour
 - Intermediate Contour
 - Council Stormwater Network
 - Railway Line
- Roads:**
 - Freeway
 - Main Road
 - Sealed
 - Sealed Laneway
 - Unsealed and Tracks
 - Watercourse

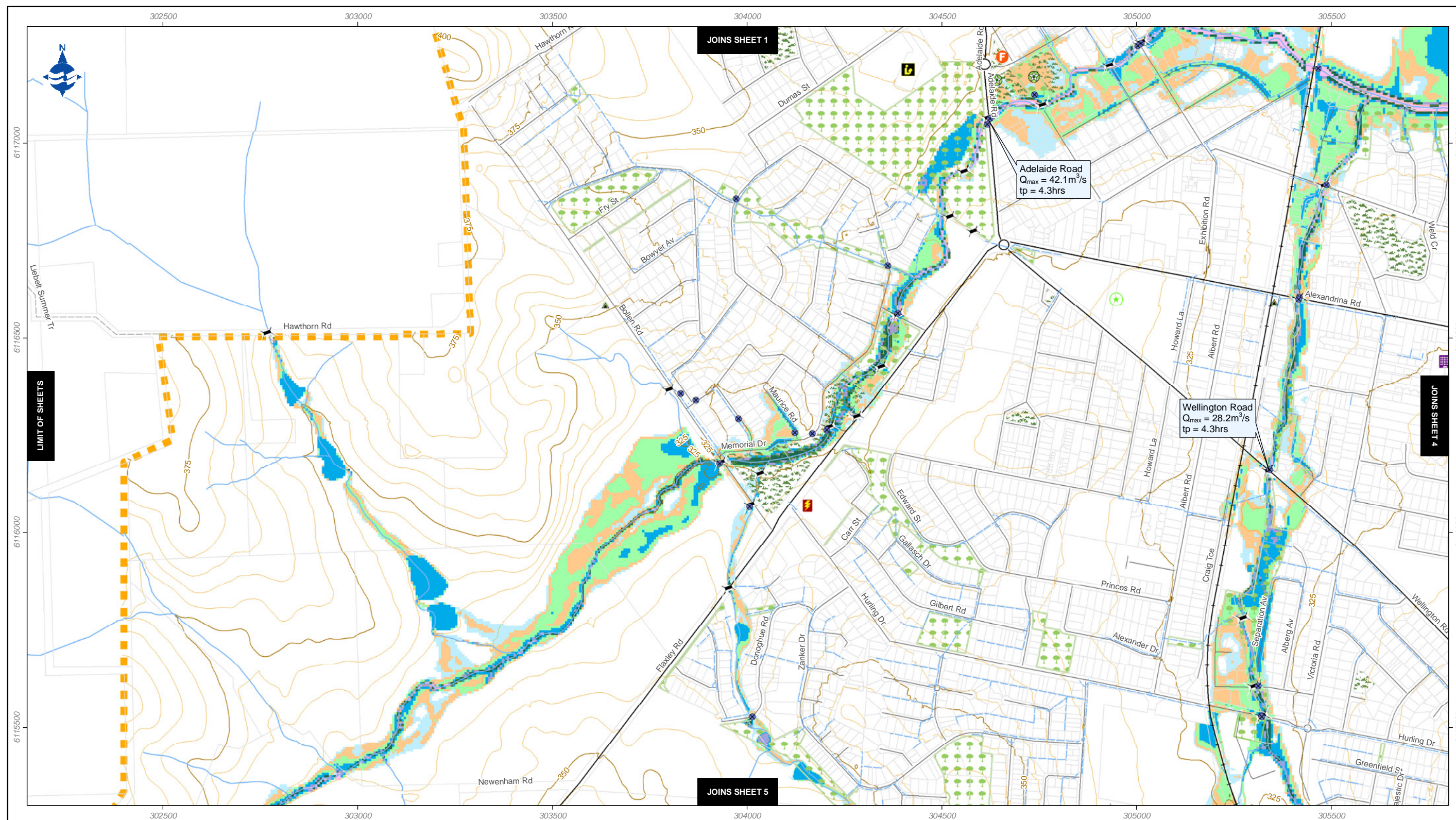
- Cadastre
- Golf Course
- Parks and Reserves:**
 - Recreation
 - Reserve
- Hydraulic Study Area
- Peak Flow
- Time to Peak

- Flood Depth (m):**
 - 0 - 0.10
 - 0.11 - 0.25
 - 0.26 - 0.50
 - 0.51 - 1.00
 - 1.01 - 1.50
 - 1.51 - 2.50
 - 2.51 - 5.00
 - Greater than 5.00

0 100 200 300 400 500
 Metres, Scale 1:10,000 on A3 Page



Mount Barker Floodplain Mapping Study
 1:100 Year ARI Flood Inundation Map
 Sheet 2 of 7



Data Source:
 SA Water Structures supplied by SA Water; Water Main Crossing Watercourse derived from data supplied by SA Water and Mt Barker City Council; Substations supplied by ETSA; Emergency and Cultural Features, Roads, Contours (Aerometrex), Council Stormwater Network and Cadastre supplied by DC of Mt Barker; Parks and Reserves supplied by Dept of Environment and Heritage (DEH); Railways supplied by Primary Industries and Resources SA (PIRSA) Freeway digitised by AWE; Watercourse and Railway edited to improve their spatial precision; Study Area supplied by AWE; Flood data supplied by Water Technology.



LEGEND

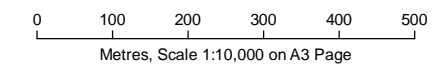
- Bridges and Culverts
- Substations
- SA Water Structure
- Water Main Crossing Watercourse
- Emergency and Cultural Features:**
 - Hospital
 - Police Station

- CFS
- Mount Barker Council Depot
- Mount Barker Town Hall
- Sports Club
- Mount Barker Cemetery
- Mount Barker Library
- Mount Barker Showgrounds
- Mount Barker Tourist Park
- Laratinga Wetlands

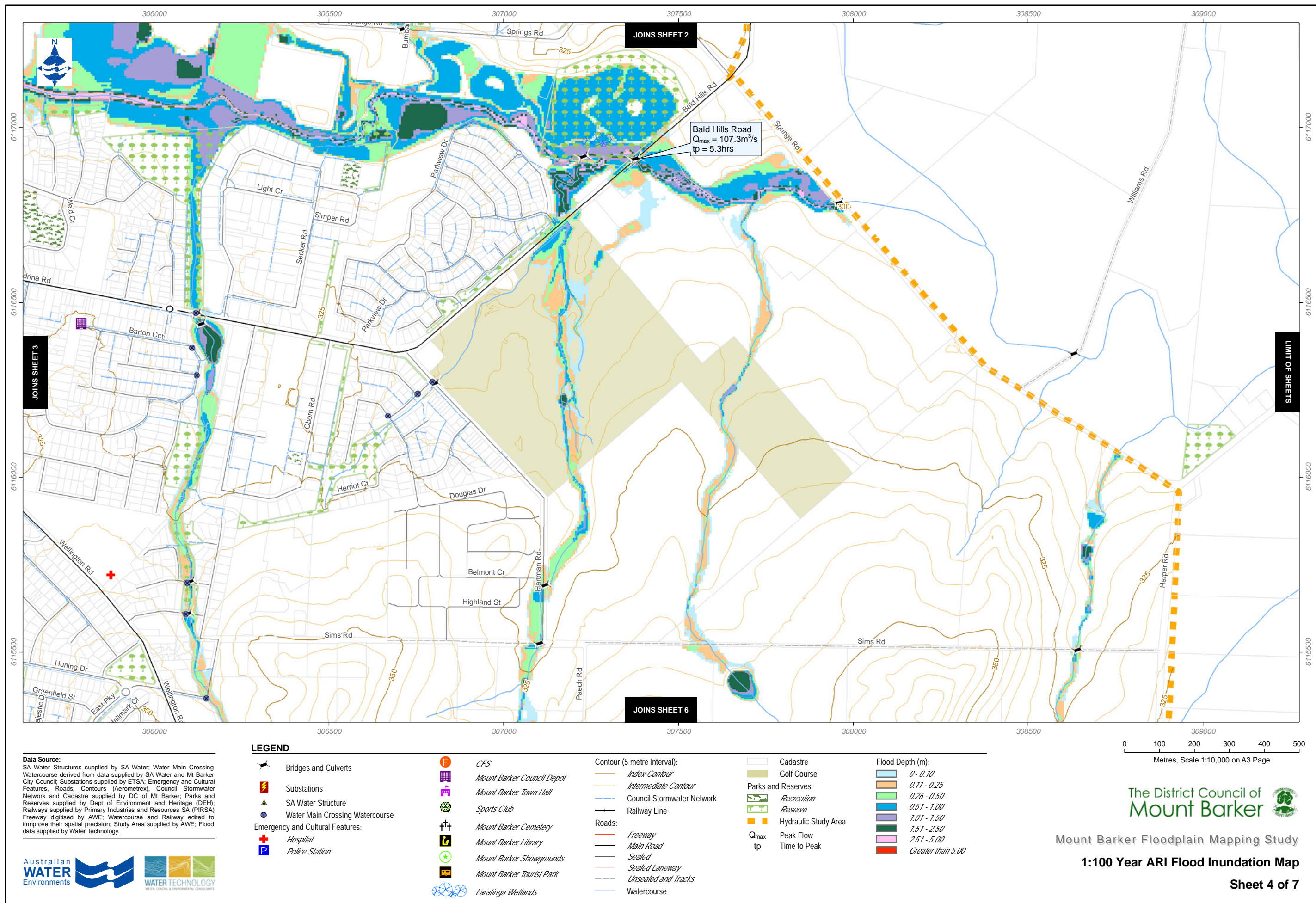
- Contour (5 metre interval):**
 - Index Contour
 - Intermediate Contour
 - Council Stormwater Network
 - Railway Line
- Roads:**
 - Freeway
 - Main Road
 - Sealed
 - Sealed Laneway
 - Unsealed and Tracks
 - Watercourse

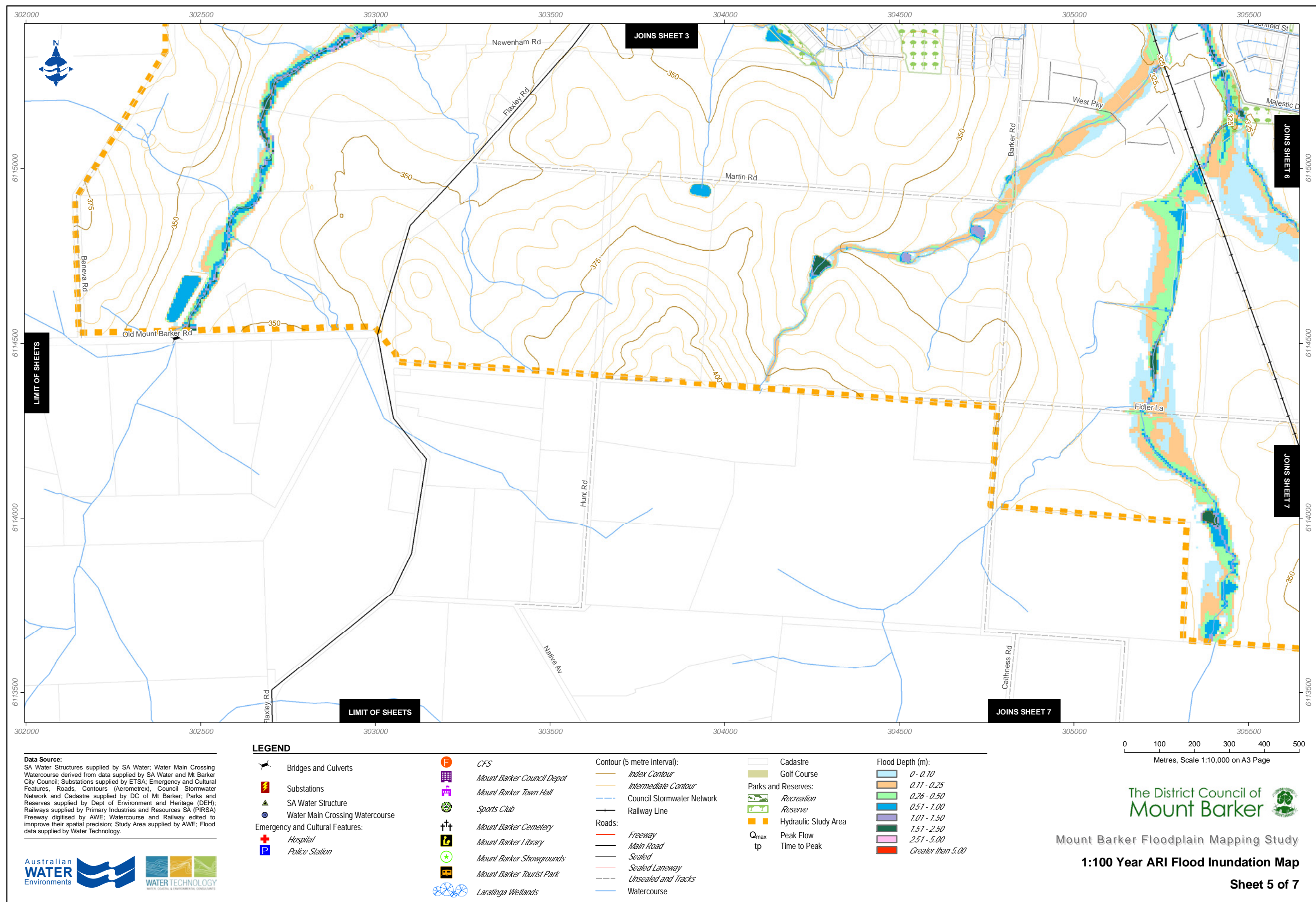
- Cadastre
- Golf Course
- Parks and Reserves:**
 - Recreation
 - Reserve
- Hydraulic Study Area
- Peak Flow
- Time to Peak

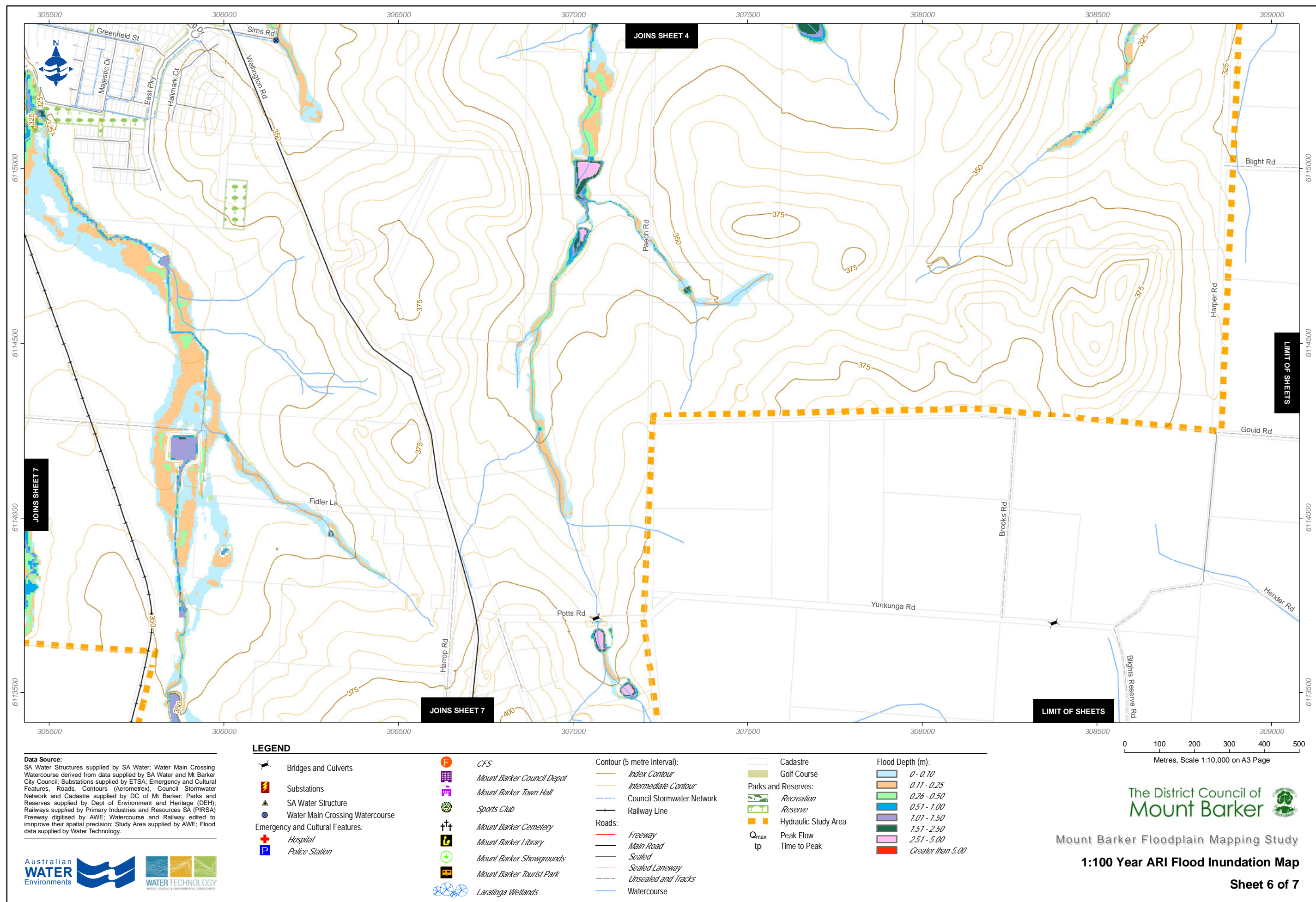
- Flood Depth (m):**
 - 0 - 0.10
 - 0.11 - 0.25
 - 0.26 - 0.50
 - 0.51 - 1.00
 - 1.01 - 1.50
 - 1.51 - 2.50
 - 2.51 - 5.00
 - Greater than 5.00

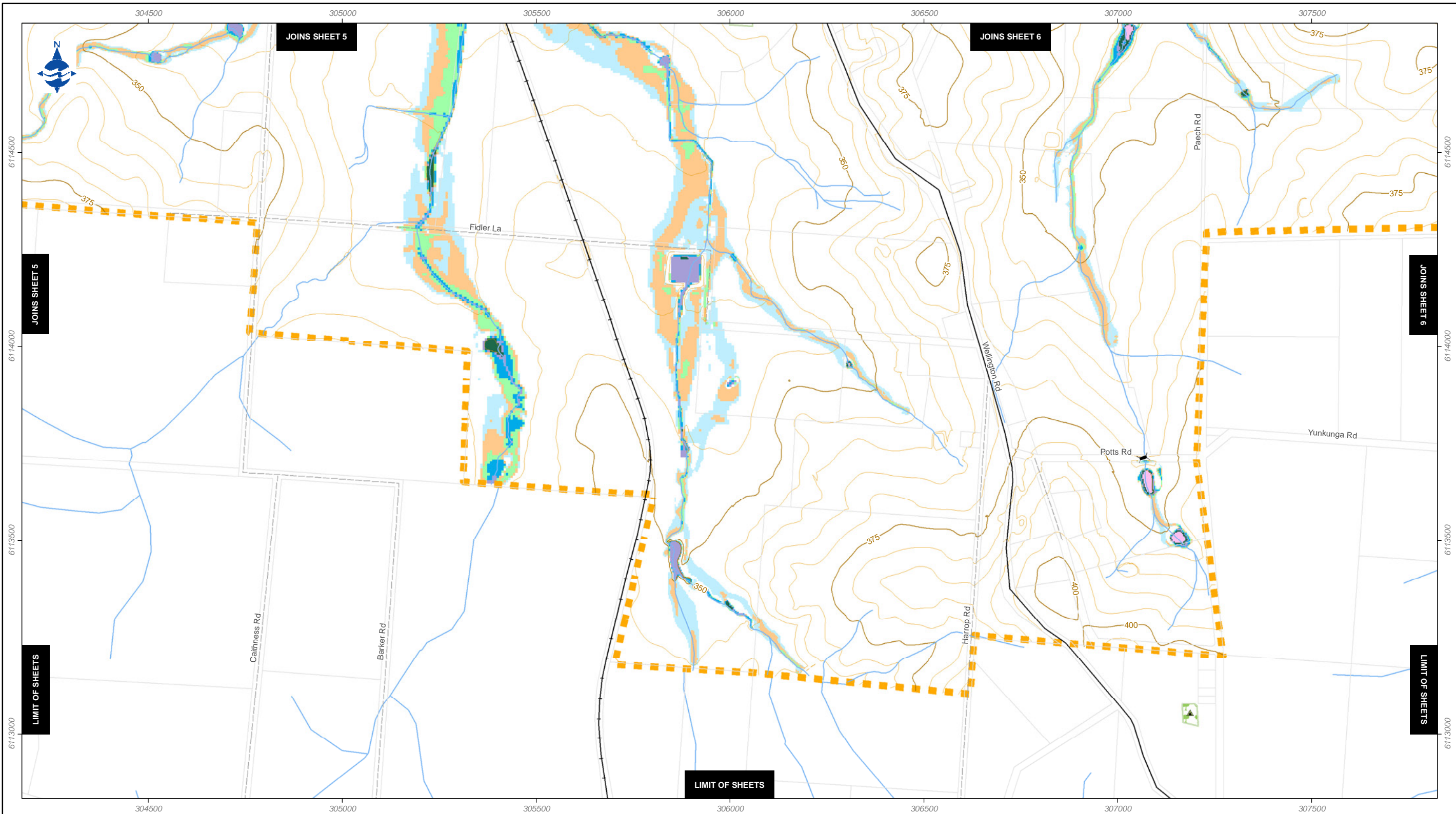


The District Council of Mount Barker
 Mount Barker Floodplain Mapping Study
1:100 Year ARI Flood Inundation Map
Sheet 3 of 7









Data Source:
SA Water Structures supplied by SA Water; Water Main Crossing Watercourse derived from data supplied by SA Water and Mt Barker City Council; Substations supplied by ETSA; Emergency and Cultural Features, Roads, Contours (Aerometrex), Council Stormwater Network and Cadastre supplied by DC of Mt Barker; Parks and Reserves supplied by Dept of Environment and Heritage (DEH); Railways supplied by Primary Industries and Resources SA (PIRSA) Freeway digitised by AWE; Watercourse and Railway edited to improve their spatial precision; Study Area supplied by AWE; Flood data supplied by Water Technology.



LEGEND

- Bridges and Culverts
- Substations
- SA Water Structure
- Water Main Crossing Watercourse
- Emergency and Cultural Features:**
 - Hospital
 - Police Station

- CFS
- Mount Barker Council Depot
- Mount Barker Town Hall
- Sports Club
- Mount Barker Cemetery
- Mount Barker Library
- Mount Barker Showgrounds
- Mount Barker Tourist Park
- Laratinga Wetlands

- Contour (5 metre interval):**
 - Index Contour
 - Intermediate Contour
 - Council Stormwater Network
 - Railway Line
- Roads:**
 - Freeway
 - Main Road
 - Sealed
 - Sealed Laneway
 - Unsealed and Tracks
 - Watercourse

- Cadastre
- Golf Course
- Parks and Reserves:**
 - Recreation
 - Reserve
- Hydraulic Study Area
- Peak Flow
- Time to Peak

- Flood Depth (m):**
 - 0 - 0.10
 - 0.11 - 0.25
 - 0.26 - 0.50
 - 0.51 - 1.00
 - 1.01 - 1.50
 - 1.51 - 2.50
 - 2.51 - 5.00
 - Greater than 5.00

0 100 200 300 400 500
Metres, Scale 1:10,000 on A3 Page

The District Council of
Mount Barker

Mount Barker Floodplain Mapping Study

1:100 Year ARI Flood Inundation Map

Sheet 7 of 7