

THE STRATEGY REPORT

MARCH 2013



DISTRICT COUNCIL OF MOUNT BARKER

OpEN SpACE, RECREATION AND

pUBLIC REALM STRATEgy

Acknowledgements

The Open Space, Recreation and Public Realm Strategy has been undertaken by Suter Planners and WAX Design and managed by David Cooney, Senior Policy Planner for the District Council of Mount Barker.

Recreation planning undertaken by council with input from Suter Planners is also incorporated within the Strategy.

The initial Reports developed by Suter Planners and WAX Design have been modified by Council to reflect feedback from management and elected members.

The Open Space, Recreation and Public Realm Strategy was commissioned by the District Council of Mount Barker and the Department of Planning, Transport and Infrastructure (DPTI).

Project Steering Group members outlined below have provided valuable input to the Open Space, Recreation and Public Realm Strategy and Elected Members and community members have contributed throughout the study through consultations.

David Cooney	Senior Policy Planner and Project Manager
Penny Worland	Policy Planner
Peter McGinn	Community and Recreation Development Officer
Marc Voortman	Principal Planner - Urban Growth and Strategic Projects
Greg Sarre	Environment and Sustainability Planning Consultant
Emma Cope	Environmental Project Officer
Judith Urquhart	Senior Development Officer - Planning
Chris Lawrey	Urban Forest Officer
Marcus Smith	Manager Assets and Contracts
Norm Key	Manager - Field Services
Terry Banks	Senior Project Officer/Environmental Engineer
Rebecca Fox	Assets Officer
Michelle Bell Assets	Project Coordinator, Building and Recreation
Greg Billington	Cemetery Curator



Contents

EXECUTIVE SUMMARY	1	THEME 1: OpEN SpACE pROVISION AND MANAgEMENT	21	THEME 4: CONNECTIONS AND BUFFERS	43
THE STRATEgy CONTEXT	2				
Reason for the Strategy		Key Findings		Overriding Direction	
Strategy Focus		Overriding Direction		Principles for Public Realm and Township Character	
Links to Other Plans		Principles for Public Realm and Township Character		Strategies for Public Realm and Township character	
Approach to the Strategy		Strategies for Public Realm and Township character			
				THEME 5: SUSTAINABLE ENVIRONMENTS	51
				Overriding Direction	
THE DISTRICT OF MOUNT BARKER	11	THEME 2: pUBLIC REALM AND TOWNSHIP CHARACTER	25	Principles for Public Realm and Township Character	
District Character		Overriding Direction		Strategies for Public Realm and Township character	
Demographic Considerations		Principles for Public Realm and Township Character			
		Strategies for Public Realm and Township character			
				pOTENTIAL pROJECTS	57
				Growth Towns Potential Projects	
THE STRATEgy FRAMEWORK	16	THEME 3: SpORT AND RECREATION	29	Other Townships Potential Projects	
Open space, recreation and public realm Vision		Overriding Direction			
Strategy Themes		Principles for Public Realm and Township Character		IMpLEMENTING THE STRATEgy	88
		Strategies for Public Realm and Township character		Approach to Achieving Strategies and Projects	
				Council and Stakeholder Roles	



Executive Summary

The Study Context and Approaches

The District of Mount Barker Open Space, Recreation and Public Realm Strategy has been developed to guide the future provision, development and management of open space, recreation and the public realm over the next 10 years and beyond. This includes providing a direction for open space provision, sport and recreation facilities, the public realm and the natural environment.

The Open Space, Recreation and Public Realm Strategy draws and builds on previous planning including Council's Strategic Plan 2009-2019, the Community Recreation and Sport Plan 2004-2007 and other plans that relate to open space, recreation and the public realm.

The Open Space, Recreation and Public Realm Strategy places a particular focus on catering for the recreation and sport needs of the community and supporting an active and integrated community. This includes providing directions relating to:

- Outdoor sporting facilities
- Indoor sport and recreation
- Recreation parks and related infrastructure
- Opportunities for walking and bike riding (trails and pathways)
- Horse activity and other rural recreation pursuits
- Other sport and recreation activities

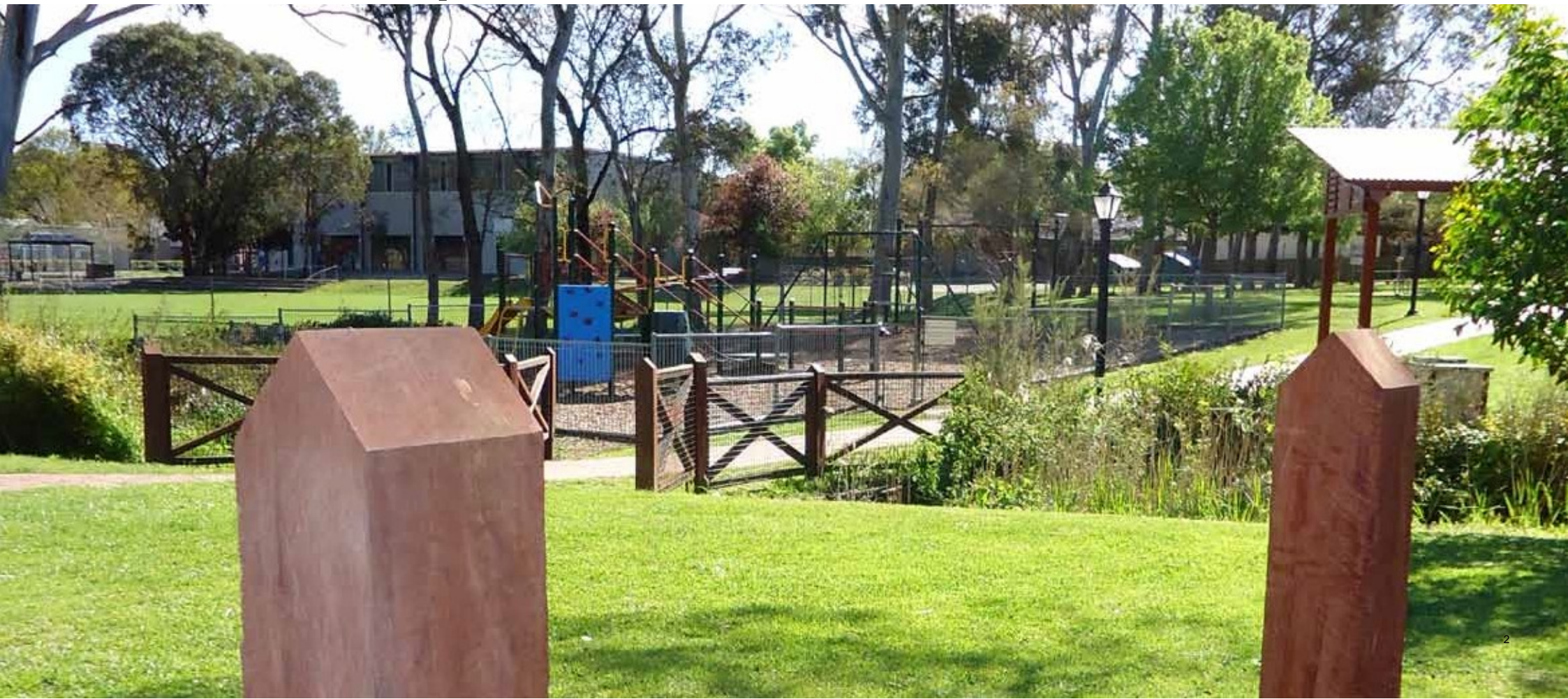
The Open Space, Recreation and Public Realm Strategy has been jointly commissioned by the District Council of Mount Barker and the Department of Planning, Transport and Infrastructure (DPTI). The Strategy will guide the future allocation of funds by Council and the State Government as funds become available and in accordance with other priorities.

Overall, the Open Space, Recreation and Public Realm Strategy will contribute to the quality, diversity and livability of the District of Mount Barker and aims to achieve the vision shown on the following page as well as Council's broader Strategic Plan vision.

Four reports have been developed including:

- This **Strategy Report** which summarises the findings and outlines the recommended directions, principles, strategies and potential projects for open space, recreation and public realm in the District of Mount Barker.
- A **Background Report** that provides additional information and analysis relating to open space, recreation and public realm demand and supply.
- An **Open Space Provision and Management Framework** that guides the provision, development and management of open space within the District of Mount Barker.
- A **Public Realm Framework** that provides a design framework and guidelines for public realm.

Our Vision : “The District of Mount Barker will be a highly livable and diverse place with quality open spaces, recreation facilities, public realms and natural environments that support active and connected communities and provide unique destinations and experiences for residents and visitors”





Strategy Themes

The Open Space, Recreation and Public Realm Strategy focuses on five overriding Themes that are considered to be of high importance to the District of Mount Barker. These Themes aim to collectively address the key issues and opportunities associated with open space, recreation and the public realm in the District of Mount Barker.

The overriding directions for each Theme are summarised below.

Open Space Provision and Management

Adopt a strategic and consistent approach to the provision, development and management of open space across the District.

Public Realm and Township Character

Enhance the character and destination value of each township through high quality and activated public realm and associated open space.

Sport and Recreation

Establish and maintain quality and diverse sport and recreation open space and facilities across the District to provide a focus for activities and communities.

Connections and Buffers

Maintain and further establish a network of corridors and connections across the District to reinforce the District's natural and historic features and support connected and healthy communities.

Sustainable Environments

Provide, design, enhance and manage natural environments and natural features to contribute to the sustainability of the environment and the District.

Summary of the Strategies

A summary of the strategies outlined in the Open Space, Recreation and Public Realm Strategy is provided below for each Theme. Detailed principles, strategies and potential projects are outlined in the Strategy Report for the Themes and townships.

It is important to note that the Open Space, Recreation and Public Realm Strategy does not commit Council, the State Government or any other organisation or community group to undertake a suggested strategy or potential project.

Instead the Strategy aims to guide local and state government and communities to achieve enhancements and facilities over time as resources become available and taking other priorities and changing needs into consideration.

Open Space provision and Management

- Use of the Open Space Provision and Management Framework to guide the provision, hierarchy, development and management of open space.
- Adoption of hierarchy and category systems to guide development and management.
- A partnership approach to achieving strategies and projects.

Public Realm and Township Character

- Use of the Public Realm and Urban Design Framework to guide enhancements to the public realm and the design of urban infrastructure.
- Integration of public art and cultural diversity to reinforce township character and heritage.
- Establishment of gateways (including landscapes).
- Enhancements to main streets (landscape and built form).
- Maintaining and further developing significant landscape assets including native and culturally significant trees.
- Planning for appropriate streetscapes including through street tree plans.
- Encouragement of built form to complement township character.

Sport and Recreation

- Planning for multi-use community and sports hubs in the growth towns.
- Maintaining and enhancing existing sports grounds in other townships.
- Adopting a strategic approach to providing and enhancing outdoor courts, including community courts.
- Longer term planning for lawn bowls and croquet in the Mount Barker township.
- Review potential for local or regional aquatic facilities with surrounding LG areas.
- Reviewing and enhancing the existing indoor sports centre in Mount Barker.
- Partnerships with schools regarding shared-use of school ovals, fields and recreation facilities.
- Planning for equestrian facilities.
- Establishing and enhancing regional and district recreation destinations, including tourism based.
- Maintaining and upgrading larger parks in growth towns to create neighbourhood recreation destinations.
- Creating family oriented recreation parks and spaces.
- Enhancing the location, quality, diversity and accessibility of facilities for older children and young people.
- Improving the quality and diversity of play opportunities across the District through innovative and adventure play elements.
- Supporting but minimising the impacts of adventure based activity.
- Broadening the opportunities for people to walk dogs.
- Providing opportunities for community events linked to key recreation parks.

Connections and Buffers

- Creation of greenways and open space corridors to define towns and maintain landscape character.
- Maintaining and improving the quality and connection of existing trails.
- Extending and connecting 'disconnected main pathways and trails.
- Further enhancement of Laratinga Trail as a major green spine and connector.
- Establishing and strengthening connections between town centres and open space and facilities.
- Establishing trail connections between townships.
- Connecting higher level trails to recreation nodes.
- Maintaining and enhancing nature trails.
- Identifying unmade road reserves for strategic trail routes and corridors.

Sustainable Environments

- Update Councils Environmental Plan.
- Establishing some additional natural areas where they have high environmental or cultural value.
- Enhancing and protecting existing natural areas.
- Undertaking watercourse and riparian rehabilitation.
- Managing access to natural areas through trails.
- Adopting Water Sensitive Urban Design approaches to achieve quality and functional open spaces.
- Developing a tree strategy to guide the establishment and management of trees.
- Planting of trees and landscapes to strengthen the character of the District and environmental value including culturally significant trees as well as local indigenous vegetation.
- Green infrastructure design to contribute to development appeal.
- Community involvement in environmental projects.
- Developing a management plan for cemeteries.

It is recommended that Council adopt best practice principles when providing, developing and managing open space, public realm and related facilities, including the importance of Ecologically Sustainable Development, Crime Prevention Through Environmental Design (CPTED), Healthy by Design and Disability access principles. These principles are referred to throughout the Open Space, Recreation and Public Realm Strategy and are reflected in the guidelines.

An ongoing commitment will be required by Council, the State Government, the community, other agencies and the private sector to achieve the directions, strategies, projects and guidelines outlined in the Open Space, Recreation and Public Realm Strategy. A partnership approach will be essential as Council will not have the resources to undertake all strategies and projects outlined in the Strategy.

Whilst the Strategy does not commit Council, the State Government or the community to undertake strategies or projects, it will provide guidance on the opportunities and priorities as resources become available and in accordance with other priorities over the next 10 years.

The Strategy Context

Reason for the Strategy

The District Council of Mount Barker and the Department of Planning, Transport and Infrastructure (DPTI) commissioned the Open Space, Recreation and Public Realm Strategy to ensure a strategic and consistent approach to planning for open space, recreation and the public realm in the District of Mount Barker. The District of Mount Barker is identified as a key growth area in the 30 Year Plan for Greater Adelaide and planning is required to guide the provision and development of open space, recreation and the public realm and determine future priorities.

The Open Space, Recreation and Public Realm Strategy will consider the needs and values of the existing and future population across the District and provide a framework establishing, upgrading and maintaining open space, including sport, recreation, community, heritage and environmental open spaces. The Strategy will also guide the provision and upgrade of recreation and sport facilities including outdoor, indoor and aquatic facilities.

The Strategy will influence the quality and level of development of open spaces and facilities in the growth towns and in other townships across the District, taking hierarchy and community needs into consideration. The Strategy will also influence the quality and design of the public realm in townships and the natural and built character, livability and visitor appeal of the District.

A strategic approach to planning for open space, recreation and the public realm is particularly important in a growth area like the District of Mount Barker to ensure there is an equitable and adequate provision of open space and facilities in new development areas, established areas and townships. The District wide approach to the Open Space, Recreation and Public Realm Strategy will ensure an integrated and balanced approach to open space, recreation and public realm provision and enhancement across the District.

The Open Space, Recreation and Public Realm Strategy will contribute to determining the priorities and assist local and state government to strategically allocate available resources as they become available.





Strategy Focus

The Open Space, Recreation and Public Realm Strategy focuses on open space, recreation and the public realm across the District, which for the purpose of this study is defined as follows:

Open space refers to community land that is publically accessible and provided for community benefit. This includes all types of open space such as recreation parks, sports grounds, linear trails, natural areas and landscapes.

Recreation refers to recreation and sport facilities and activity opportunities including outdoor sport facilities, recreation facilities within open space such as play spaces and picnic areas, indoor sport and recreation centres, aquatic facilities and related programs and services.

Public realm refers to outdoor publically accessible places that are part of the urban fabric of towns and cities, e.g. main streets, building edges, streetscapes, plazas and squares.

The Open Space, Recreation and Public Realm Strategy provides strategic directions as well as specific directions, where:

- Strategic directions include overriding directions, principles and strategies.
- Specific directions include detailed directions within strategies, projects and specific guidelines.

The directions relate to a diversity of topics and a range of places including the District as a whole, townships, locations, and specific open spaces and facilities.

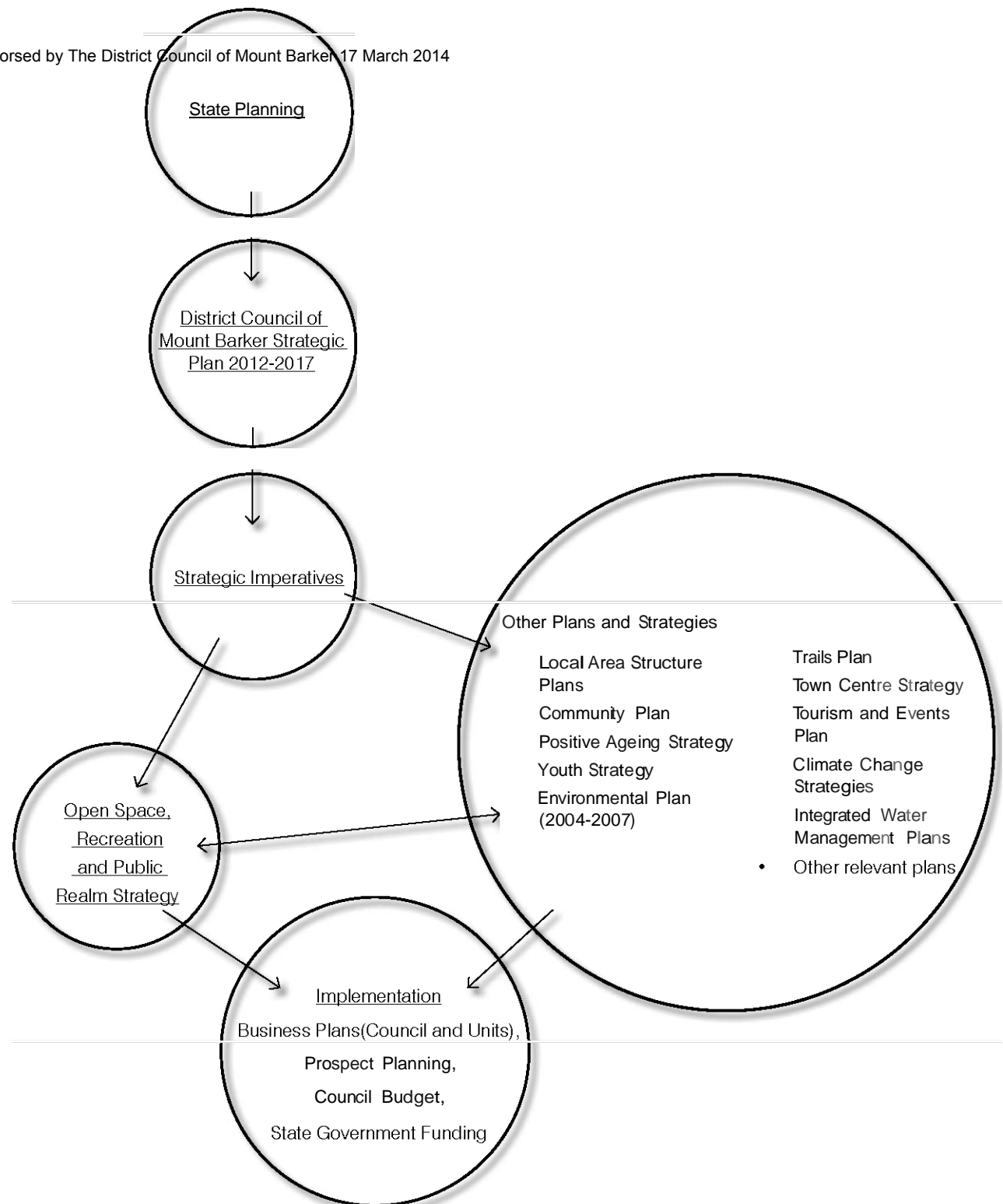
Links to Other Plans

The District Council of Mount Barker has established a strong planning framework to guide the future development of the District and the provision and character of developments, public realm, open spaces, recreational facilities, the natural environment and various community oriented facilities and services. The planning is consistent with and connects to State level planning and aims to ensure the District is a distinctive and high quality place to live, work and visit and the future needs of communities are appropriately met.

As shown in the figure on this page the District Council of Mount Barker Strategic Plan 2012-2017 is the overriding planning document. The Strategic Plan determines the primary directions and priorities for the District and guides all other planning. A range of other plans and strategies have then been developed or are in the process of being developed in accordance with the Community Goal Areas in the Strategic Plan to guide planning for development, the environment, the character of the District, specific community groups such as youth and the ageing, and various aspects of recreation and tourism.

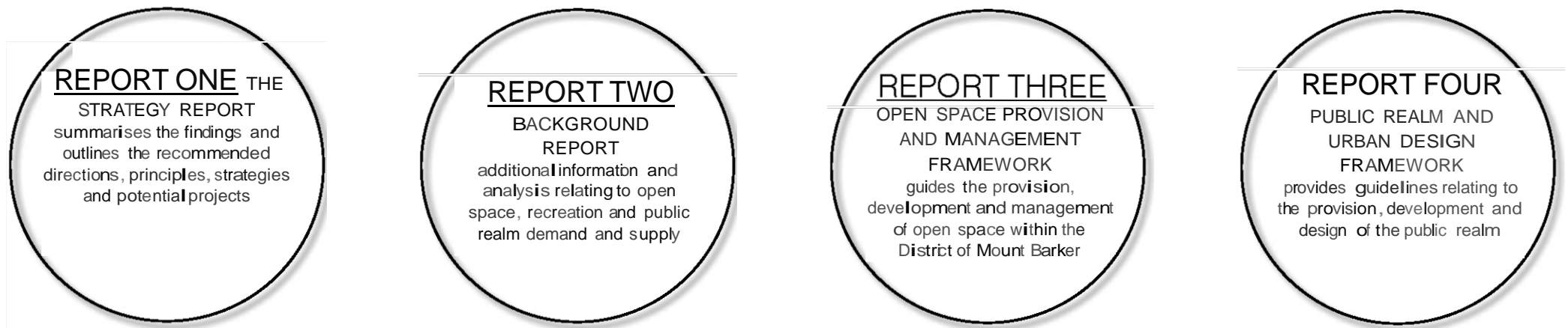
As shown in the diagram the Open Space, Recreation and Public Realm Strategy will assist Council to achieve the Strategic Plan's Strategic Imperatives of Economic Development, Urban Growth, Ecological Footprint, Climate Change and Environmental Protection, Social Infrastructure, Character and Culture and Governance and Leadership. The Open Space, Recreation and Public Realm Strategy also aims to reflect, reinforce and contribute to achieving the various other plans and strategies being developed by Council and the State Government.

The Open Space, Recreation and Public Realm Strategy will influence business planning, project implementation and the ongoing allocation of resources by Council and the State Government.



Approach to the Strategy

The District Council of Mount Barker Open Space, Recreation and Public Realm Strategy incorporates four main reports as follows:



Whilst background information and findings are provided in the Strategy Report, the details of the findings are included in the Background Report (Report 2). Overall a thorough approach to assessing demand and supply and considering population demographics, community needs, potential and actual participation in sport and recreation, township character and the existing provision and quality of open space has been undertaken.

The District of Mount Barker

District Character

The District of Mount Barker is located in the Mount Lofty Ranges around 35 kilometres from the Adelaide City using the Princes Highway. It is a large local government area of 594.6 square kilometres and adjoins five other local government areas including Adelaide Hills Council, Mid Murray Council, the Rural City of Murray Bridge, Alexandrina Council and City of Onkaparinga.

The District is considered to be a diverse peri-urban area characterised by urban areas that are experiencing strong growth, small historic and culturally valuable townships and large areas of rural hinterland. Mount Barker is the main township and this is closely connected to townships of Littlehampton and Nairne. Hahndorf, Meadows, Macclesfield and Callington are good sized settlements and smaller townships include, Echunga, Kanmantoo, Brukunga, Harrogate, Dawesley, Flaxley, Prospect Hill and Wistow. The rural land is used largely for cropping and general farming, with some viticulture and horticulture.

Mount Barker, Nairne and Littlehampton are the growth towns within the District. The Princes Highway (M1 National Highway) tends to divide the District into a northern and southern area and the Southern Mount Lofty Ranges differentiates the east and west through climate and vegetation variations.

Each township in the District of Mount Barker has its own unique character and it will be important to retain and strengthen this character through careful planning and management of the public realm and the related open space. As shown on the District maps the District of Mount Barker collectively has a high provision and distribution of open space with a balance of recreation, sport and natural areas with rich biodiversity.



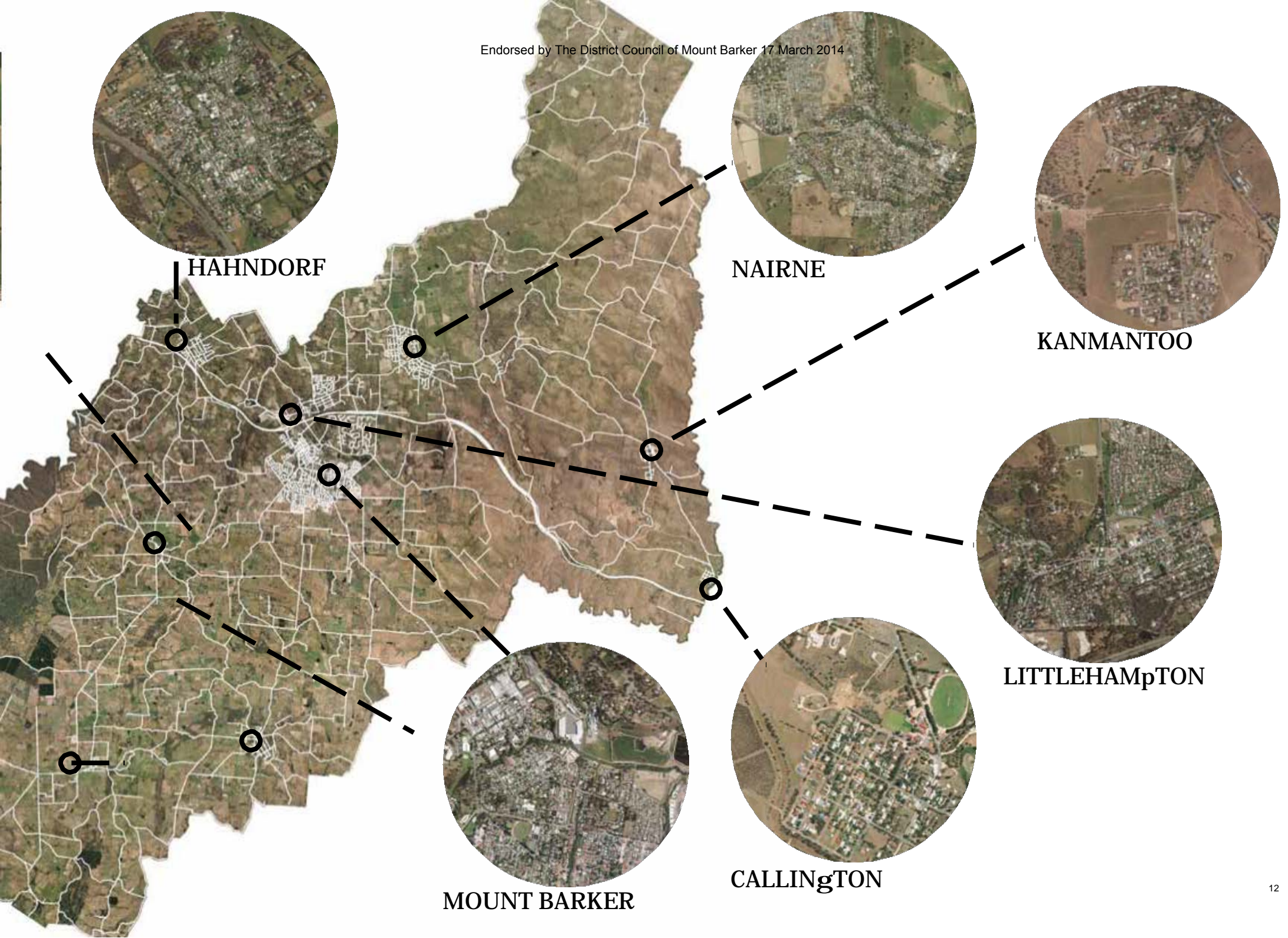
ECHUNgA



MACCLESFIELD



MEADOWS





A number of rivers and creeks are located within and around the District including Onkaparinga River on the western border, Mount Barker Creek and Western Flat Creek which traverse through the township of Mount Barker, Nairne Creek which traverses through the township of Nairne, Angus River which traverses through Macclesfield, creeks named after and linking to Echunga and Meadows, and Bremer River in the east. Most of these water bodies are closely connected to open space areas and associated wetlands and they provide opportunities to create appealing open spaces.

The District of Mount Barker has high Indigenous significance with the original inhabitants of the District being the Peramangk Aboriginal people who lived much of the year in the vicinity of Mount Baker. The District is also significant to the Kurna people to the west and Narrindgeri peoples to the east of

the District. The District of Mount Barker also has a strong tourism and visitor focus with food, wine and nature being key visitor attractions. Hahndorf is a national and international tourism destination and a number of the other townships such as Macclesfield, Echunga and surrounding areas provide important destinations and 'stop off' locations that service and draw visitors to the District. The location and unique character of the District is ideal for events, festivals and markets to service the region and the wider Greater Adelaide area. Specifically the Summit viewing area near Mount Barker and Laratinga Wetlands are valuable visitor and local attractions and the District has a number of significant trails including the Heysen Trail, Kidman Trail and Pioneer Women's Trail which, together with Kuitpo Forest, strengthen the tourism and recreational value of the District.





Demographic Considerations

In 2011 the District of Mount Barker had a population of 29,764, which is expected to more than double to around 63,000 to 68,000 over the next 20 to 30 years. 50,000 to 55,000 of this population are likely to be in the growth towns of Mount Barker, Littlehampton and Nairne. The significant increase in the population will create substantial additional demand for open space and sport, recreation and community facilities, and could potentially impact on the character of the District. The Open Space, Recreation and Public Realm Strategy aims to determine the future requirements to ensure the community is well catered for and also highlight opportunities to retain the valued District characteristics and minimise the impacts of the population growth.

The District has a very strong family focus with large proportions of children and youth and large proportions of young and middle aged adults. It is anticipated that the future population will also be oriented towards families with children, youth and young to middle aged adults remaining as key groups in the community. As a result the demand for sport, recreation and community activity opportunities is likely to be very high and through these activity opportunities there is potential for communities across the District to be highly activated and connected. The District is an average income area and unemployment levels are quite low. However, the level of debt through mortgages is relatively high and this highlights the importance of providing affordable and accessible spaces and activity opportunities.

Whilst each township in the District has quite different characteristics, most of the townships have a strong family focus with large proportions of children, youth and young and middle aged adults. Hahndorf is the main exception, which has a very high proportion of older adults. Even so, it is important to realise that older adults live in each of the other townships and the District is a popular place for older adults to visit. The main demographic differences between the townships relates to socio-economic characteristics, where some of the townships have lower incomes, higher unemployment or greater housing debt. A detailed demographic analysis of the townships is provided in the Background Report of the Open Space, Recreation and Public Realm Strategy (Report 2) to provide a further understanding of the characteristics and the implications.

The clustering of communities within townships contributes to a strong sense of community and belonging across the District and particularly in the smaller townships. Retaining this sense of community, particularly in the growth towns, could be a challenge as new people move into the District. New residents could be relocating from a city environment and may also have a strong commuter focus through their employment and as such have less connection to the District. A good provision of sport, recreation and community activity opportunities within the District and appealing public realms that draw people to the townships and main streets in the District will contribute to connecting people to the District and building a stronger sense of community.



The Strategy Framework

Open Space, Recreation and Public Realm Vision

The following overriding Vision for the District of Mount Barker included in Council's Strategic Plan is highly relevant to open space, recreation and public realm and the Open Space, Recreation and Public Realm Strategy will contribute to achieving this Vision.

'Our Vision is for the Mount Barker District to be a community that values its people, rich history and cultural identity and where environmental sustainability is paramount. Our Community will cherish and protect its picturesque and peaceful setting. The economy will thrive with a regional centre at its core and with townships and rural communities that are innovative, vibrant and well connected'

A 10 Year vision relating specifically to open space, recreation and the public realm has also been developed to provide a framework for the Open Space, Recreation and Public Realm Strategy.

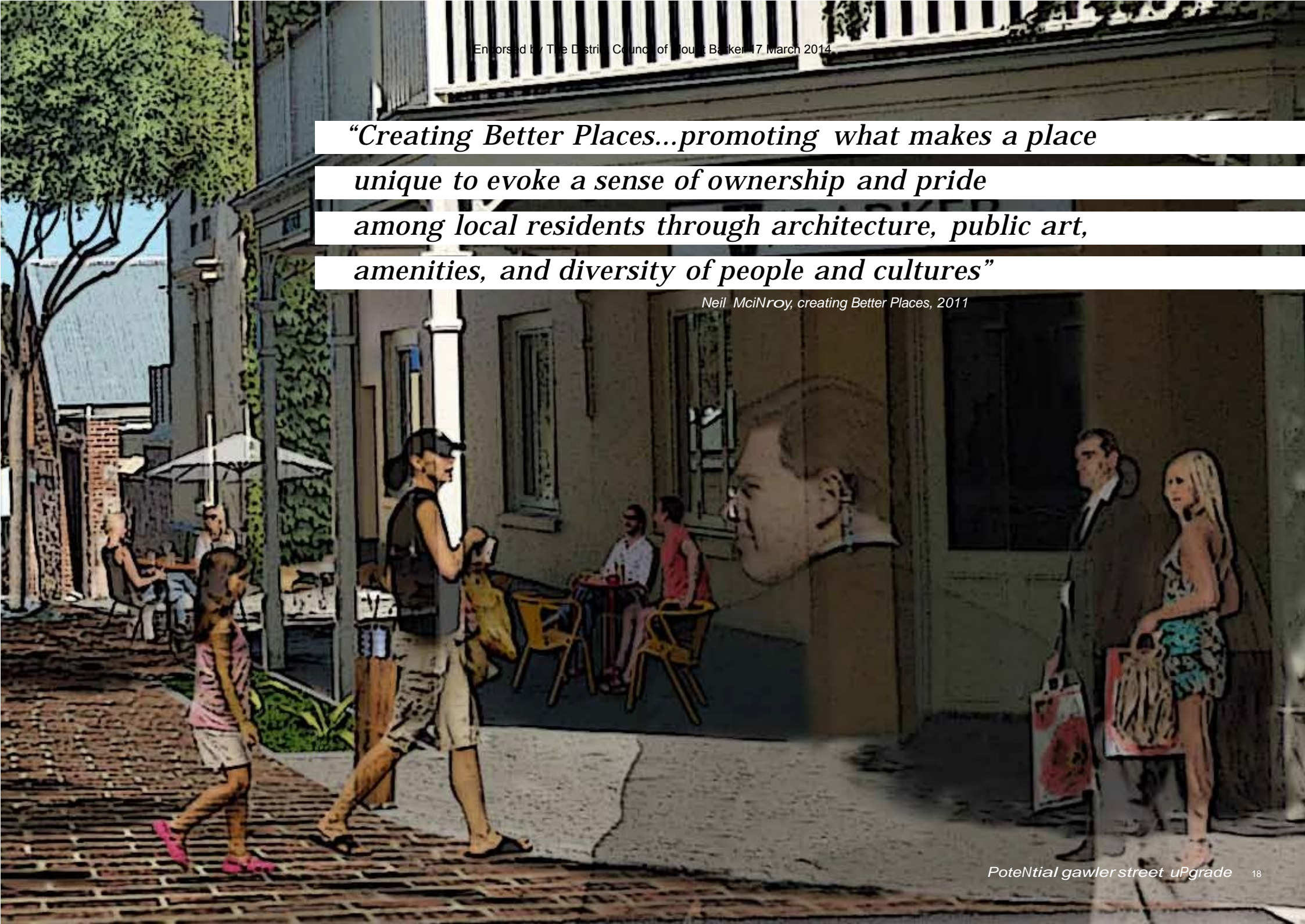
'The District of Mount Barker will be a highly livable and diverse place with quality open spaces, recreational facilities, public realms and natural environments that support active and connected communities and provide unique destinations and experiences for residents and visitors'





*“Creating Better Places...promoting what makes a place
unique to evoke a sense of ownership and pride
among local residents through architecture, public art,
amenities, and diversity of people and cultures”*

Neil McInroy, creating Better Places, 2011



Strategy Themes

The District of Mount Barker Open Space, Recreation and Public Realm Strategy directions are presented within five Themes as outlined on this page.

The Themes are 'headings' that have been identified as being particularly important to the District of Mount Barker and indicate the overriding priorities for the District.

Information and directions are provided for each Theme in the following sections including:

- A summary of the key findings relating to each Theme
- An overriding direction that provides a framework for the Theme
- Principles and Strategies for each Theme together with a rationale for each strategy

Specific potential projects relating to the strategies are included in a later section in the Strategy Report.

It is important to note that the Strategies do not commit Council, the State Government or any other organisation or community group to undertake an action or establish a facility.

The Strategies are provided as a guide to assist Council and other groups to make decisions and allocate resources as they become available over time.

[Theme 1]

**Open Space
Provision and
Management**

[Theme 2]

**Public Realm
and Township
Character**

[Theme 3]

**Sport and
Recreation**

[Theme 4]

**Connection and
Buffers**

[Theme 5]

**Sustainable
Environments**





Theme 1: Open Space Provision and Management

Key Findings

Existing Open Space Provision and the Implications

The District of Mount Barker has a high provision of open space with 607 hectares of non operational community land in 2012 including:

- 200 ha of parks and linear parks
- 166 ha of sporting open space
- 158 ha of natural areas.

The open space is equitably spread across the District and represents 20.39 hectares per 1,000 people based on a 2011 population of 29,764. Whilst this is a relatively high provision, the open space is valued by communities and contributes to the unique open and natural character of townships and the District.

Within the next 20-30 years the District could have around 769 hectares of non operational open space (based on 12.5% of 1,300 hectares being allocated through new development areas) With a population of 63,000 this would equal 12.2 hectares per 1,000 people which is a good provision but not too high given the open space will support visitors as well as residents.

Ensure that all public open space is designed in such a way as to minimize costs associated with maintaining it in a fit for purpose state.

Provision in New Development Areas

New development areas are required to provide up to 12.5% of open space in accordance with the Development Act 1993. This provision will generally be less than the existing provision of open space across the District given that 12.5% in a lower density area potentially represents around 3 hectares per 1,000 people compared to an existing District provision of 20.39 hectares per 1000 people. The character of the growth towns and the availability of activity opportunities could be impacted on as a result. As such it will be important to ensure that open spaces in new development areas are good quality, appropriately located and designed to be usable and benefit local communities and the District. Streetscapes should also be good quality to enhance the character of the development area and contribute to a walkable and appealing environment.

Open Space Management

Council does not currently have a framework for guiding the development and management of open space, including in new development areas. A framework is required as part of the Open Space, Recreation and Public Realm Strategy.

Overriding Direction:

Adopt a strategic and consistent approach to the provision, development and management of open space across the District.

Principles

- The high provision of different types of open space should be maintained given the importance of open space to the community and visitors and its contribution to the character and appeal of the District.
- Given the high provision of open space, not all open space can be developed and maintained to the same high quality. A hierarchy approach to development and management will be required and contributions from other levels of Government, communities and other partners will need to be sought.
- Open space in new development areas should be located and designed to contribute to highly appealing and livable local areas. This includes providing good quality and functional open spaces and streetscapes that strengthen the character and appeal of the development area.
- Whilst there should be a commitment to maintaining a good provision of open space across the District there should also be some flexibility in reviewing open space where the open space has limited value to the community and where resources can be better directed to other open space with improved outcomes that benefit the community.

Strategies

Topic	Strategy	Rationale
Open Space Framework	Use the Open Space Provision and Management Framework to guide the provision, hierarchy, purpose, development and management of open space across the District, including in new development areas.	The Framework will ensure that open space is appropriately developed and resources are allocated to achieve the greatest community benefit.
Management Approach	Adopt a hierarchy and category approach to developing, managing and maintaining open space, using the Open Space Provision and Management Framework.	Council does not have the resources to develop and manage all open space to the same high level and different types of open space justify different approaches.
Partnerships	Seek State Government support continue to involve the community and other potential partners to achieve enhancements to open space and facilities and maintain an equitable spread of quality open space.	Partnerships will be essential to maintain and enhance the existing provision of open space and achieve the directions in the Open Space, Recreation and Public Realm Strategy.

“What I have learned convinces me that there is one overriding consideration for any open space program. It is, simply, that open space must be sought as a positive benefit. Open space is not the absence of something harmful; it is a public benefit in its own right, and should be primarily justified on this basis”

william whyte, securing open space for urban america, 1959



Theme 2: Public Realm and Township Character

Key Findings

Township Character

The townships across the District of Mount Barker each have their own unique character, heritage and public realm qualities that are valued by communities and visitors. The unique characteristics of smaller townships create appealing destinations that people in the growth towns benefit from and collectively the diversity of townships creates a highly livable District. Public realm and open space enhancements will maintain the unique character, diversity and destination value of townships and the District.

Growth Implications

The District is experiencing growth and some townships could be at risk of losing valued characteristics and heritage features as a result. Consideration needs to be given to the potential impact of future developments on townships and the appropriate public realm responses that can be adopted to minimise the impacts.

Public Realm Infrastructure

There is potential to improve the consistency, quality and location of infrastructure associated with public realms across the District. Issues include inconsistencies with fencing and paved surfaces, surface quality and design and style issues with amenities, light fittings, bollards and other infrastructure. A greater emphasis on Ecologically Sustainable Development is also required.

Place Making

There is potential to enhance place making through public realm revitalisation, design innovations and public art including in open space, public places, growth towns, new development areas and smaller townships. Public art, innovative design, unique landscape character and other design features can contribute to the uniqueness and appeal of the place and provide tourism and economic development opportunities.

Activated Spaces

The public realm should include places for people to gather and experience the culture and heritage of a township or the District, including through events and local markets. Places for people to participate in activity are also required to encourage active and connected communities. Whilst the District of Mount Barker has activated public realm there is potential to strengthen and enhance the quality and diversity of these spaces.

Heritage Preservation

A number of townships in the District have an important historical and cultural heritage that should be preserved when planning for the public realm and open space. This includes the need to sensitively manage the design and function of townships and main streets to minimise impacts on the heritage character including the appropriate management of features, infrastructure, car parking and traffic.

Main Streets

There is potential to strengthen the character and heritage value of townships through main street enhancements, including enhancements to streetscapes, infrastructure design and increased connection to the built form and heritage character. In addition, planning for open space and facilities linked to main streets should ensure there is consistency with the form and character of the main street.

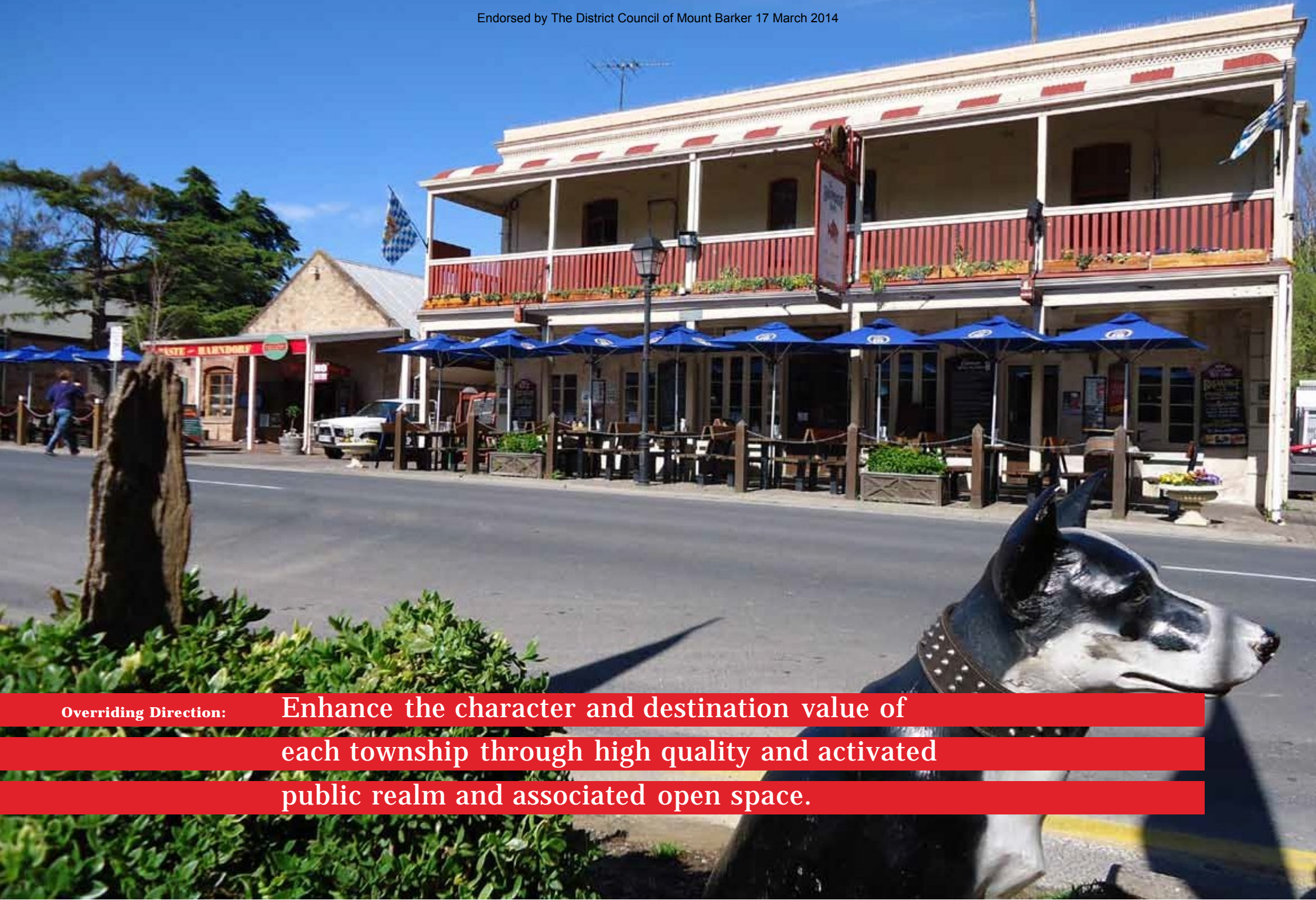
Streetscapes

Streetscapes have the potential to enhance the character and appeal of townships and neighbourhoods. Large tree species, including indigenous and culturally significant trees, provide shade for pedestrians and habitat for bird life and other fauna and also add aesthetic value to streets and the surrounding built form. Streetscapes potentially have a high economic benefit with the potential to add to the value of housing within development areas.

A key concern for Council is the lack of large tree species in some of the new housing developments and guidelines and street tree plans for existing and proposed urban developments that address this issue are desired. Council's Structure Plan for the growth towns recommends that streetscapes are developed as greenways within the town centre built environment. In addition, there is potential to strengthen the focus on street tree management and maintenance in townships.

Gateways

Some townships are lacking a sense of arrival and this can be created through defined entry statements and natural landscapes that complement and reinforce the character of the township.



Overriding Direction:

Enhance the character and destination value of each township through high quality and activated public realm and associated open space.

Principles

- The public realm should reflect and reinforce the unique character and qualities of townships to maintain the diversity of the District.
- There should be a balance between the 'built form and infrastructure' and 'landscapes and natural features' to create integrated public realm and places.
- The public realm should contribute to place making and provide accessible places for people to gather, be active and connect as a community.
- The public realm should aim to protect and enhance the natural landscape and the built form heritage value of townships.
- Enhancements to the public realm should contribute to achieving broader Ecologically Sustainable Development objectives.
- The public realm of each township should aim to be high quality and distinctive to strengthen the destination value of the District.

Strategies

Topic	Strategy	Rationale
Township Enhancements	Use the Public Realm and Urban Design Framework to guide enhancements to the public realm and strengthen place making and the sense of community in each township. The Framework includes universal design principles and specific enhancement recommendations for each township.	There is potential to further define townships and reinforce the unique character and heritage qualities of the townships through public realm enhancements.
Infrastructure Review	Use the Public Realm and Urban Design Framework to review the style and design of urban infrastructure and reduce the physical and visual impact of infrastructure on the public realm and character of townships. Place a particular focus on reviewing: <ul style="list-style-type: none"> • Infrastructure design and style in open spaces • Main street infrastructure and buildings • Fencing design and boundary consistency • The usability and accessibility of infrastructure and spaces 	Infrastructure inconsistency and quality is an issue across the District that impacts on the quality and appeal of townships.
Public Art	Integrate appropriately designed and located public art within townships and particularly in main streets and open spaces to recognise and reinforce the heritage of the District (indigenous and European), contribute to place making, and strengthen the character of townships.	Sensitively designed and integrated public art has the potential to enhance the appeal and character of places.

Strategies (continued)

Topic	Strategy	Rationale
Main Streets	Define and reinforce the main streets of townships through enhancements to public realm features (paving, light fittings, bollard design), tree planting and landscapes, streetscape activation and appropriate built form development. A particular focus should be placed on Nairne, Macclesfield, Littlehampton, Meadows and Callington and a commitment should be made to maintaining the existing unique character of Gawler Street in Mount Barker.	Main streets provide a destination for communities and visitors and there is potential to strengthen the main street focus in a number of townships.
Built Form	Encourage new built form and development to recognise and complement the heritage character of townships through appropriate design considerations. This includes defining the appropriate character of future developments such as local and neighbourhood centres and guiding the design and character of the built form to be culturally and environmentally sensitive. Guidelines should be included within the District of Mount Barker Development Plan to formalise desired outcomes.	Built form has the potential to complement or impact on the character of a township or area and can contribute to achieving cultural and ecological sustainability.
Landscape	Continue to develop significant landscape assets within the public realm using a mix of indigenous and culturally significant exotic plantings in accordance with the landscape and cultural heritage character of each township.	Trees and landscapes have the potential to define the character of townships and open spaces.
Streetscapes	Develop street tree plans and thematic designs that reflect and reinforce the character of the District and townships and integrate Ecologically Sustainable Development principles.	A stronger focus is required regarding street tree planting and design.
Gateways	Strengthen the sense of entry to townships through 'gateway statements' using art works, infrastructure and landscapes, with a particular focus on Littlehampton and Meadows using the Public Realm and Urban Design Framework as a guide.	Some townships are lacking a sense of entry due to the design of urban environments and the loss of landscape character over recent years.

Theme 3: Sport and Recreation

Key Findings

Planning for Recreation

The provision of recreation and sport is an important priority for the District Council of Mount Barker as recreation and sport make a valuable contribution to health and wellbeing, social cohesion and cultural identity. Sport and recreation contribute to the social connectedness of the community, particularly in rural areas. Council provides and maintains a range of facilities across the District and is committed to ensuring the District's population is well catered for now and in the future.

In accordance with the 30 Year Plan for Greater Adelaide the Mount Barker District will substantially increase in population over the coming years and it is essential that there is a good provision of recreation and sporting facilities and open space to enable a quality lifestyle and to avoid social issues and gaps in provision in the future. The Open Space, Recreation and Public Realm Strategy aims to guide 'what should be provided where' to assist Council in its future planning and liaison with developers, the State Government and other potential partners.

In planning for future population growth, there will be potential to establish some higher level regional facilities that strengthen the profile and quality of the District. In addition, it will be important to cater for the smaller townships and achieve a spread of good facilities within a hierarchy framework. The Mount Barker District Council will not have the resources to develop all facilities to the same high level and the size

and quality of facilities should be consistent with the size of townships and related demands.

Community Expectations

The District of Mount Barker is located around 35 kilometres from the City of Adelaide and whilst a large proportion of the population commutes to the City for employment, there is an expectation by the community that the District will have a good provision of sport and recreation facilities and services to reduce the need for weekend and evening travel. In addition the community consultations undertaken as part of the Open Space, Recreation and Public Realm Strategy highlighted a desire for sport and recreation spaces and facilities to be improved in quality. The desire for smaller townships to be self sufficient regarding sport and recreation is also strong.

Diverse Activity Opportunities

Families, children and young people represent a large proportion of the District of Mount Barker population and as a result there is high demand for sport and recreation including informal activities such as play, BMX, scooters, skateboarding and ball games. Opportunities exist to improve the provision and quality of family oriented open space and facilities and to broaden the potential activity opportunities for children and young people (e.g. creative play, activity opportunities for

older children). There is also a need to support ageing adults and people living alone with increasing numbers of single households.

Ensure that a diverse range of open space is provided to ensure equity of access and provision for all residents.

Tourism and Eco Tourism

The District of Mount Barker has a strong tourism and visitor focus including at Hahndorf, Macclesfield, Prospect Hill, Callington and the State Forests and trails. Visitors travel to the area for day trips and overnight visits and participate in a range of activities and this justifies the provision of quality parks and facilities that support visitors.

The natural environment is a key attraction for visitors with links to a range of activities including bush walking, bike riding, bird watching, horse riding and picnics. Laratinga Wetlands, The Summit and Kuitpo Forest are particularly popular destinations for residents and visitors. This reinforces the importance of maintaining and enhancing the natural environment to support eco-tourism including the provision of designated tracks to manage access to the natural environment. There is a need for sensitively designed and located infrastructure to support eco-tourism.

Rural Character Implications

The rural character of the District of Mount Barker and the focus on major trails creates strong demand for equestrian and adventure oriented activities in the District such as horse riding along trails and mountain bike riding. Whilst mountain bike riding and other challenging activities are catered for through the State Forests and State level trails there could be potential to broaden the trails network and activity opportunities in the District.

It is a concern that most of the equestrian facilities in the District of Mount Barker (except trails) are located on private land and there is limited security of tenure. As the greater metropolitan has become developed, activities involving horses has generally been displaced and relocated further away from the population. Given the rural character of the District and the accessibility of the District to metropolitan Adelaide suburbs, it will be important to ensure that equestrian facilities are provided in the District in the future, whether this be on public or private land.

Investigate opportunities to partner with private organisations and government agencies to provide equestrian facilities.

Sport in the District

The District of Mount Barker has nine Council owned sports grounds spread across the District as shown on the map on the following page. Whilst this is a high provision with one sports ground for every 3,300 people (as at 2011), most of the sports grounds are located in smaller townships away from where the majority of the population will be in the future. These sports grounds provide an important focus for townships and are highly valued by surrounding communities.

Whilst the growth towns currently have four sports grounds, three of these only have one oval of which one (Dunn Park) is small and not fit for purpose. Planning has identified that the existing provision will not have the capacity to meet the needs of the future population. A further nine ovals and eight playing fields are likely to be required to cater for the future sporting needs based on population of 50,000 – 55,000 across the growth towns. A number of lower participation sports including baseball, rugby union, rugby league and touch football have also indicated a desire to establish facilities in the District. Partnering with schools to provide infrastructure. New and upgraded sports facilities should reflect best practice regarding energy efficiency, water sustainability and climate change adaptation.

Previous recreation and sport planning for the District recommends that consideration be given to establishing a regional sports hub on the Council Land on Springs and Bald Hills Roads (ex Stephenson) on the eastern side of the Mount Barker township to cater for various sports including a potential relocation of the Mount Barker Showground users to this site. Private land, such as the Polo Club which is located within the urban growth area, has also been identified as a potential option for a future sports ground.

Outdoor Courts

Whilst the District has a good provision of tennis courts (61 tennis courts overlaid with 25 netball courts) there will be justification for additional courts in the growth towns as the population growth occurs. A number of the existing courts are linked to the smaller townships away from the growth towns. A potential participation analysis suggests there could be a need for around 20 additional tennis courts in the growth towns. A number of these courts will be provided through a proposed expansion of the Anembo Park court facility (an additional 6 courts which will reduce the potential gap to 14 courts).

A regional netball complex for the District is located in Woodside and the main user group, Mid Hills Netball Association, has indicated a desire to retain the regional focus of netball courts at this site. However, changing participation rates for different sports should be recognized and sporting facilities need to be flexible enough to cater for changing demands. As such, opportunities to establish additional courts should be allowed for to enable a response to demand for additional courts if and when this occurs. This includes the potential need for a second regional netball complex in the District at some time in the future. Some netball courts could be overlaid on tennis courts, particular where they are required for training.

Theme 3: Sport and Recreation

Key Findings

Multi-use Community and Sports Hubs

The development of multi-use community and sports hubs that support diverse sport, recreation and community activities and user groups is being encouraged by the Office for Recreation and Sport. Multi-use community and sports hubs are generally part of regional and district sports grounds. Opportunities will exist to establish regional and district multi-use community sports hubs within the District of Mount Barker particularly linked to the Council Land on Springs and Bald Hills Road (ex Stephenson) development and other regional sports grounds such as Anembo Park. This could include the provision of multi-use indoor centres as well as outdoor areas and related buildings that cater for a range of groups and activities.

Indoor and Aquatic Facilities

The Mount Barker District is currently lacking quality and flexible aquatic and indoor sports facilities. In particular:

- Mount Barker Mountain Pool is not ideally located as it is away from other recreation and sport facilities, relatively low profile and the site is quite small. The facility is rapidly declining in condition and does not meet the requirements of the swim club or the broader community. As an outdoor facility it is only open for part of the year. It would appear that some Mount Barker residents travel to the Woodside and other swimming pools rather than use the Mount Barker pool and membership of the swim club is declining. The facility could become a health and safety issue in the near future.
The population threshold that may trigger the need for an indoor aquatic facility should be investigated.

- The existing Adelaide Hills Recreation Centre is centrally located in Mount Barker and has an excellent potential profile as part of the Showground site. However, the facility is ageing and poorly designed, and the site is relatively tight with car parking limitations due to the oval and courts being located on the same site.
Council should investigate potential partnerships to provide an enhanced indoor recreation facility to potentially include an aquatic centre. A potential location to be investigated is the Mt Barker showgrounds.

Given the Mount Barker District is a growth area and the population will increase in size, there is an opportunity to review these facilities and plan for higher quality and connected facilities that meet the future needs of the community. The appropriate location, size and design of the facilities will require a detailed feasibility analysis that considers potential use and viability.

A feasibility study would be required to determine the type of aquatic facility and the most appropriate location for a facility.

Major Recreation Parks

A number of key parks have been established in the District of Mount Barker to provide a focus for recreation and community activity. Keith Stephenson Park is the most significant in relation to size and level of development and Laratinga Wetlands also provides a valuable recreation resource, both of which are located in the Mount Barker township. Other key recreation parks include Byethorne Park in Nairne, Battunga Park in Meadows and Davenport Square in Macclesfield.

There is potential to enhance the quality and function of these recreation parks and establish other parks with a destination value including town centre and visitor destinations. Potential enhancements include increasing the creativity and challenge of play spaces, broadening the recreation activity opportunities and enhancing seating, picnic settings and pathway networks within key parks.

Consider potential future use of Glebe land.

Informal Recreation

It will be important to continue to provide opportunities for active recreation in the growth town area and in the smaller townships. This will include ensuring existing recreation facilities are appropriately distributed and maintained and provide safe and appealing activity opportunities for children, young people and adults. There will also be opportunities to provide new and innovative recreation activity opportunities, particularly through growth town development and linked to regional and district recreation parks (category 1 and 2).

Whilst the District of Mount Barker has a relatively good provision of trails, playspaces, BMX and community courts, the scope of the activity opportunities is relatively limited with a lack of creative and unique play and activity opportunities. The potential to broaden the recreation activity opportunities should be considered, particularly when developing regional and district parks (category 1 and 2) and as part of growth town new development planning.

Neighbourhood and Local Parks

There is potential to enhance the quality, accessibility and recreation value of some neighbourhood and local open spaces across the District. In particular, neighbourhood parks in the established areas of the Mount Barker township tend to be poorer quality or less developed than parks in the new development areas and there is justification to improve the quality of the established area parks and parks in smaller townships.

Shared Use of School Facilities

A number of school ovals and fields are used for community sport and there is potential to establish shared-use partnerships with other schools. However, often school ovals are not large enough, the surface of the playing field is poor quality or amenities and infrastructure such as lighting are lacking. Opportunities to improve the quality and function of school facilities in partnership with schools should be considered.

There is an increasing tendency for schools to rely on Council owned open space for sports activities and some schools are being designed with smaller grassed areas that are not suitable for sport. Over time school usage could impact on the quality of fields if activities are not appropriately managed and partnerships with schools to maintain and enhance the sports fields may be required.

Where areas have less recreation open space such as in parts of Littlehampton there could be opportunities to seek community use of school fields for broad community recreation use.

Broader Community Facility Opportunities

When planning for sport and recreation it is important to consider the potential connections with broader community facilities. The Office for Recreation and Sport is encouraging the development of Community Sports Hubs which connect community facilities and activities with sport through the shared-use of facilities. Community Resource Hubs are also being developed across Australia that link libraries with other community facilities including indoor recreation and youth facilities.

A community hub generally refers to a building or public place that is shared-use, supports a range of activities, user groups and services and facilitates community connectedness. The Office for Recreation and Sport defines a Community Sports Hub as “a local, regional, or state level centre of sport and active recreation activities that optimises the shared use of location and facilities to meet the needs of the communities it serves. In serving this purpose, a Hub must strive to be sustainable, multi-use, accessible, safe, inclusive, relevant to its communities and connected to the principles of community building.”

A community hub could incorporate recreation and sport facility components, community centre spaces, health services, child care, education facilities and other social services. It can include one building, or a number of connected buildings and spaces. Community hubs can reduce the risk of duplicated buildings, manage the overall building size and enable shared infrastructure such as car parking, provide economies of management and provide a central and convenient place for communities to gather and obtain services.

Overriding Direction: Establish and maintain quality and diverse sport and recreation open space and facilities across the district to provide a focus for activities, communities and visitors.



Principles

- The District of Mount Barker and the surrounding areas should aim to be as self sufficient as possible in the provision of sport and recreation open space and facilities. This includes providing diverse and flexible open space types and facilities that collectively meet the existing and future needs of the community.
 - A mix of flexible, functional and good quality facilities will be required to support diverse recreation activity demands and cater for the future population growth. This will include a diversity of outdoor sport, informal recreation, indoor sport and recreation, aquatic, equestrian and community facilities provided through Council, schools, the private sector and the community.
 - An emphasis should be placed on enhancing the quality and destination value of recreation open space to provide a focus for all age groups and visitors and broaden activity opportunities across the District.
 - Given the District of Mount Barker has a large proportion of families, children and young people, an emphasis should be placed on innovative play and diverse activity opportunities.
 - A hierarchy of sport and recreation facilities should be provided including some regional multi-use community and sports hubs that support higher level games and events and could include regional level indoor sport, aquatic and community facilities. Additional sports grounds and high profile recreation destinations in the growth towns will be required to meet the needs of the future population.
 - Connections should be established between recreation and sport facilities and with other community and commercial facilities and services to strengthen profile, usage and viability. This includes connections with schools, community centres, conservation and tourism infrastructure, centres of health, libraries, museums, retail centres and other facilities.
- Future aquatic and indoor sport facilities should be located, designed, developed and managed with the following principles in mind:
- Viability and feasibility
 - Accessibility (central location, main roads, public transport link, trail connections)
 - Quality and innovation (quality structure and appeal, innovative design)
 - Functional spaces (appropriate design to meet user requirements, large sites, adequate car parking, links to open spaces)
 - High profile (visual exposure, main roads, connections to other key facilities and town centres)

Strategies

Topic	Strategy	Rationale
Growth Towns Sports Hubs	<p>Plan for additional multi use regional or district sports hubs strategically located across the growth towns to meet sport and recreation requirement associated with population growth and to support higher level competitions and events. These sportsgrounds could include quality multi-use community and sports buildings, Australian Rules Football ovals, cricket pitches including some turf, playing fields (hockey, soccer, rugby, touch football), diamonds (softball and baseball), outdoor courts (tennis and netball including the potential for regional complexes) and other infrastructure such as cricket nets, amenities and spectator seating. The regional and district multi-use sports hubs could collectively provide around 4-6 ovals, 8-10 playing fields and 20 or more outdoor courts. The opportunities could include:</p> <ul style="list-style-type: none"> • Enhance Anembo Park in Littlehampton to provide regional softball, hockey and tennis facilities (including expansion of the tennis courts to 12 courts) • Additional multi use and shared recreation hubs to be provided to cater for increasing population and identified need. • Consider establishing a new sports ground around the Nairne area in addition to the existing sports ground <p>These potential opportunities may require further investigation and planning.</p> <p>Detailed planning will be required as a 'next step' for each sports ground and broader opportunities for community centres and hubs could also be considered.</p>	<p>The potential requirement for additional sports ovals, fields and courts is likely to justify three or four sports grounds, each with a number of ovals and fields. Anembo Park is an existing regional sports ground that should be retained and other opportunities identified for multi-use sports hubs should be considered.</p> <p>Higher quality multi-use regional community and sport hubs have the potential to cater for a range of sport and community needs and attract government funding as a result. In addition, there are efficiencies associated with sports hubs including the potential for multi-use facilities and the efficient management of multiple ovals and fields. Spreading the sports hubs across the growth towns will provide equitable access and help to reduce traffic movement across the District.</p>

Topic	Strategy	Rationale
Existing Sports Grounds in Townships	In partnership with sport and community groups, maintain, enhance and increase the use of existing sports grounds in townships to cater for local communities and contribute to meeting future sports demands. Specific suggestions for enhancement are included in the Potential Projects Section.	The existing sports grounds in townships are highly valued by communities and considerable resources have been contributed to the development and management of these facilities over recent years. The sports grounds provide a 'social heart' for many communities as well as opportunities for participation in sport and physical activity. A number of the existing sports grounds are in need of further improvement and communities have indicated a commitment to contribute to this.
Outdoor Courts	Adopt a strategic approach to upgrading, further developing and using tennis and netball courts across the District. This could involve rationalising some facilities while providing some additional courts in the growth towns. Some larger netball and tennis court facilities will be required including the planned tennis complex in Anembo Park and allowing for outdoor courts as part of Growth Towns Sports Hubs. A detailed analysis of courts to determine specific works will be required.	The District of Mount Barker has a relatively high provision of courts but there will be a need for additional courts in the growth area as the population increases. There could be potential to reduce the number of courts in some towns and it will be important to include courts within sports hubs to provide a focus for tennis and netball.
Lawn Bowls and Croquet	In the longer term, and in consultation with the Mount Barker lawn bowls and croquet groups, investigate the opportunities for establishing new, better located and connected facilities in the future linked to one of the new sports hubs. Other existing lawn bowls facilities across the District should be maintained where there is demand.	The existing Mount Barker lawn bowls and croquet sites could have commercial potential and there could be other locations that would better support these sports.
Golf Courses	Given the existing over provision of golf courses review the need and potential alternate uses for Council golf course facilities.	There is potential to continue to enhance the quality and viability of some golf course facilities.
Supporting Sports	Assist sports to provide programs and services through grant funding, promotions and continued services to sports.	Sports play a key role in servicing the community and require ongoing support.

Strategies (continued)

Topic	Strategy	Rationale
Aquatic Facility	Review the need for a local indoor recreation facility incorporating an aquatic centre in Mt Barker.	The Mountain Swimming Pool in Mount Barker is ageing, not ideally located and in need of major upgrade or replacement. There is community demand for and a need to consider establishing an indoor swimming pool that will provide a quality all year round facility for lap swimming, training and recreation swimming.
Indoor Sport and Recreation	<p>Undertake a detailed review of the existing indoor sport centre and consider the requirements and opportunities for facility upgrade and expansion. This includes considering the potential to expand on the existing indoor sport centre site, establishing an integrated aquatic and indoor sport facility, and assessing potential costs and feasibility. Other sites options could also be considered as part of the feasibility analysis providing the other sites are high profile and easily accessible, with links to schools. Through this planning consider the potential to create a community hub with links to other community facilities.</p> <p>Continue to establish partnerships with schools in the growth towns to enable community use of school ovals, fields and recreation facilities, with a particular focus on senior schools and colleges with larger field areas and school halls (for indoor sports). Partnership arrangements with existing and future schools could involve improving the quality of playing surfaces and providing basic amenities such as toilets and lighting.</p>	The Adelaide Hills Recreation Centre is beginning to decline in quality and has the potential to be enhanced in design and function. In particular, there is potential to strengthen the fitness and activity components of the facility to broaden the services to the community and enhance viability.
Community Use of School Facilities		Opportunities for community use of school facilities should be considered as this will reduce the number of additional ovals and fields required and can also benefit schools through Council and community contributions to improving the facilities.

Topic	Strategy	Rationale
Youth Recreation	<p data-bbox="808 328 1451 435">Enhance the location, quality, diversity and accessibility of facilities for older children and young people (8-18 years), taking hierarchy and the demands of specific age groups into consideration. This includes considering the following:</p> <ul data-bbox="808 464 1451 1029" style="list-style-type: none"> <li data-bbox="808 464 1451 571">• Increase the security and activation of the existing skate park through site redesign, lighting and a shared-use pathway that better connects the skate park with the surrounds <li data-bbox="808 584 1451 659">• Consider opportunities to include paths and 'challenge' tracks that are designed to cater for children with scooters and bikes <li data-bbox="808 671 1451 722">• Improve the provision and quality of BMX facilities across the District <li data-bbox="808 735 1451 786">• Establish skateable spaces that are versatile and unimposing to meet skateboard, scooter and BMX needs <li data-bbox="808 799 1451 850">• Broaden the community use of outdoor courts (e.g. include backboards and rings for casual basketball) <li data-bbox="808 863 1451 970">• Plan for other unique recreation components that could attract families and contribute to the diversity of key recreation parks, e.g. a fixed table tennis table, hitting wall, climbing wall, flying fox, soccer goal <li data-bbox="808 983 1451 1029">• Locate youth facilities in activated and open spaces and avoid 'hidden' or isolated facilities <p data-bbox="808 1058 1451 1109">Detailed facility planning will be required as a 'next step' to the strategy.</p>	<p data-bbox="1503 328 2112 403">Older children and young people are key groups in the community and isolation for Greater Adelaide increases the justification for facilities.</p>



Strategies (continued)

Topic	Strategy	Rationale
Outdoor Adventure Pursuits	<p>Guide the provision and location of adventure based outdoor activities, including:</p> <ul style="list-style-type: none"> Consider mountain bike opportunities linked to natural settings (downhill, cross country). This includes investigating lower impact opportunities for mountain bike and downhill riding facilities, including the quarry site at the back of the Mount Barker Summit Identify need and potential partners to support the development of a private motorbike facility in an appropriate location Investigate potential sites for rifle and gun clubs on public land to support the sports and minimise potential future conflicts 	<p>The demand for adventure oriented activities by young and older age groups is strong and it will be important to plan for and manage these activities.</p>
Equestrian Facilities	<p>Investigate opportunities for an equestrian centre in the Council area on public or private land. Consider the appropriate location of a regional facility with adjoin Council areas.</p>	<p>The rural character of the District and a strong existing focus on equestrian activities justifies a commitment to providing equestrian facilities. However, detailed planning and consultations will be required to ensure these facilities are appropriately located and designed and this is beyond the scope of this Strategy. Horse SA is currently undertaking this planning as part of a strategy for Greater Adelaide.</p>

Topic	Strategy	Rationale
Regional and District Recreation Park Destinations	<p data-bbox="799 319 1429 574">Establish and enhance regional and district recreation park destinations including tourist destinations to provide high quality locations and recreation activity opportunities for residents and visitors across the District. The regional and district destinations could include activity opportunities linked to picnic facilities and amenities as outlined in the Potential Projects Section. Destination opportunities for further Investigations could include major parks and town centre Parks as follows:</p> <p data-bbox="799 590 1131 630">Potential Regional Destinations</p> <ul data-bbox="799 638 1429 957" style="list-style-type: none"> • Keith Stephenson Park (Mount Barker) • Mount Barker Showground linked to indoor and aquatic (if sport is relocated). The park could have a focus on physical activity and fitness (eg running track, fitness equipment, youth components). • Council Land on Springs and Bald Hills Roads (ex Stephenson) (northern side) • Urban parks in the Mount Barker Town Centre in accordance with the Town Centre Master Plan • Laratinga Wetlands (Mount Barker) • Other regional destinations <p data-bbox="799 973 1108 1013">Potential District Destinations</p> <ul data-bbox="799 1021 1429 1276" style="list-style-type: none"> • Byethorne Park (Nairne) • Jeffrey Street Reserve and Mick Murphy Park (Nairne) • Battunga Park (Meadows) • Alec Johnston Park (Hahndorf) • Pioneer Park (Hahndorf) • Davenport Square (Macclesfield) • Hutton Reserve (Kanmantoo) • Echunga Recreation Grounds surrounds (Echunga) • Callington Oval surrounds (Callington) <p data-bbox="799 1292 1429 1399">Specific suggestions for enhancement and development are provided in the Potential Projects Section. Development of the destinations should be consistent with the Open Space Provision and Management Framework.</p>	<p data-bbox="1456 319 2105 470">The District has a number of good sized parks that are well used by the community and it is important to maintain and recognise the destination value of these parks. Some of the parks require enhancements or would benefit from being expanded in size to meet the needs of the future population.</p> <p data-bbox="1456 486 2105 550">Future potential uses for the Glebe land and Crystal lake should be investigated.</p>

Strategies (continued)

Topic	Strategy	Rationale
Growth Towns Neighbourhood Park Destinations	<p>Review the need to maintain and upgrade strategically located larger recreation parks in the growth towns to create a spread of high profile, good quality and accessible neighbourhood recreation destinations. Opportunities for further investigation could include:</p> <ul style="list-style-type: none"> • Weld Park (Mount Barker) • Ascent Estate Reserve (Mount Barker) • Bluestone Estate Reserve (Mount Barker) • Mountain Glen Reserve (Mount Barker) • Waterford Estate Reserve (Mount Barker) • Chelmsford Reserve (Mount Barker) • Moon Hill Reserve (Mount Barker) • Meil Park (Littlehampton) • Matthew Smillie Reserve (Nairne) • Rachel Circuit Reserve (Nairne) <p>Options for enhancement and development are provided in the Potential Projects Section. Development should be consistent with the Open Space Provision and Management Framework.</p>	<p>A number of existing neighbourhood and local parks in the growth towns are in need of upgrade yet Council is unlikely to have the resources to upgrade all parks and reserves. A targeted approach that involves upgrading a spread of larger and higher profile parks will ensure an equitable provision of good quality and easily accessible parks and the best use of the available resources.</p>
Family Activity Focus	<p>Establish diverse and quality family activity opportunities linked to amenities (shelter, seating, picnic settings, pathways and toilets) within regional, district and neighbourhood destinations in the growth area and in other townships including:</p> <ul style="list-style-type: none"> • Creative and innovative play (regional and district, all age and ability levels) • Scooter and roller activities linked to pathways • Ball games (tennis, basketball, netball, volleyball, bat and ball, table tennis) • Exercise and physical activities (running tracks, exercise equipment) • Event and market activity opportunities • Community gardens and orchards • Dog off leash areas, including some enclosed dog off leash exercise areas <p>Detailed planning for family orientated activity opportunities will be required as part of future master planning for parks.</p>	<p>The strong family focus of the District justifies an emphasis on play and family activity opportunities. The listing of suggested play and activity opportunities reflects the main demands expressed by the community and current recreation and play participation trends.</p>

Strategies (continued)

Topic	Strategy	Rationale
Innovative Play	<p>Improve the quality and diversity of play opportunities across the District through innovative and adventure play elements. This includes:</p> <ul style="list-style-type: none"> Planning for some regional play spaces linked to key recreation parks in the growth towns such as innovative play elements at Keith Stephenson Park, a potential adventure play space as part of Community and Sports Hubs and a unique nature play space Planning for a hierarchy of other playspaces across the District linked to larger and smaller townships and new development areas including at least one good playspace in each township and ensuring existing and future neighbourhoods have access to innovative play for different age groups 	<p>The strong family focus across the District of Mount Barker justifies a focus on play and currently the provision of innovative and unique play opportunities is limited. Innovative play facilities in other areas such as Hazelwood Park in the City of Burnside and Bonython Park in the Adelaide Parklands are extremely popular.</p>
Dogs in Open Space	<p>Continue to provide diverse opportunities for people to walk dogs. This includes considering opportunities for dedicated and safe dog walking areas as the population increases in size. A range of sites could be assessed using a set of agreed criteria.</p>	<p>A large proportion of households own a dog and walking dogs is an important physical activity. People with young dogs and older people tend to require safe dedicated spaces to walk dogs off leash.</p>
Events	<p>Provide opportunities for community events linked to key recreation parks giving consideration to the following potential opportunities:</p> <ul style="list-style-type: none"> The Showground site oval area as part of a 'village common' Event spaces linked to community and sports hubs linked to community facilities and outdoor spaces Keith Stephenson Park linked to café and activity areas The town centre 'plaza' public place 	<p>Events and markets provide opportunities for entertainment and contribute to the economy of the District and quality multi-use spaces are required that can support events.</p>

*“Community public space is important as it can
serve as a useful, local, everyday resource;
as a focus for community involvement and can assist
in generating a localised sense of belonging”*

stuart Macdonald, 'Big society': social action and the role of Public space 2011



Theme 4: Connections and Buffers

Key Findings

Structure Plan Buffers and Connections

Council has developed a Draft Structure Plan to guide the future development of the growth towns including Mount Barker, Littlehampton and Nairne. The Structure Plan recommends the provision of:

- Buffers between Nairne and Mount Barker and Littlehampton through greenways or green belts and rural land zonings to maintain the defined identity of the Nairne township
- A freeway corridor for landscaping, pedestrian access, cycleways and recreation use
- The linking of open spaces and corridors to create a network of pedestrian, cycle and recreation corridors (including electricity transmission corridors)
- Reinforcement of connections along existing creek lines (vegetation and linear connections)
- Establishment of connections to regional open space and facilities and to urban and town centres to encourage sustainable access (greenways)

Past Trails Planning

Considerable planning has been undertaken over recent years for trails in the District of Mount Barker, including through the Mount Barker Recreational Trails Strategy 2006-2010 and the Mount Barker, Littlehampton and Nairne Trails Plan 2010. The findings and directions in these plans will influence the future enhancement and further development of trails in the District.

Trail Connections within Rural and Natural Areas

A number of national and regional level trails traverse through the District of Mount Barker including the Heysen Trail, Kidman Trail, Pioneer Women's Trail and Lavender Federation Trail. These trails are located within rural, forest and natural settings and link to a number of townships including Hahndorf, Echunga, Macclesfield and Dawesley. The Kidman Trail is a significant resource for horse riding as well as walking and bike riding. Both the Heysen Trail and the Kidman Trail link to Kuitpo Forest. In addition, there are trails and tracks within Kuitpo Forest and Totness Conservation Park and tracks are linked to the Mount Barker Summit and the Laratinga Wetlands.

Local Trails in the Growth Towns

The main existing connection within the growth towns of Mount Barker, Littlehampton and Nairne is the Laratinga Trail along the Mount Barker Linear Park and through to Dunn Park. Shared-use pathways have also been established as part of new estates such as in Waterford Estate Reserve, Ascent Estate Reserve, Bluestone Estate and Fox Hill Estate and in some key parks such as Byethorne Park, but there is generally a lack of connection between these pathways. A listing of existing trails is provided in the Background Report (Report 2) and the proposed Trails Plan for the growth towns is included on the following page.

Township Local Trails

A number of local trails are provided in and around Hahndorf, Macclesfield, Echunga, Meadows and Nairne as listed in the Background Report (Report 2). These trails generally cater for walking and bike riding.

Road Reserves

Unmade road reserves and vegetated narrow road reserves are spread across the District of Mount Barker and may provide opportunities for establishing some trail connections and local trails for walking, bike riding and horse riding.

Overriding Direction:

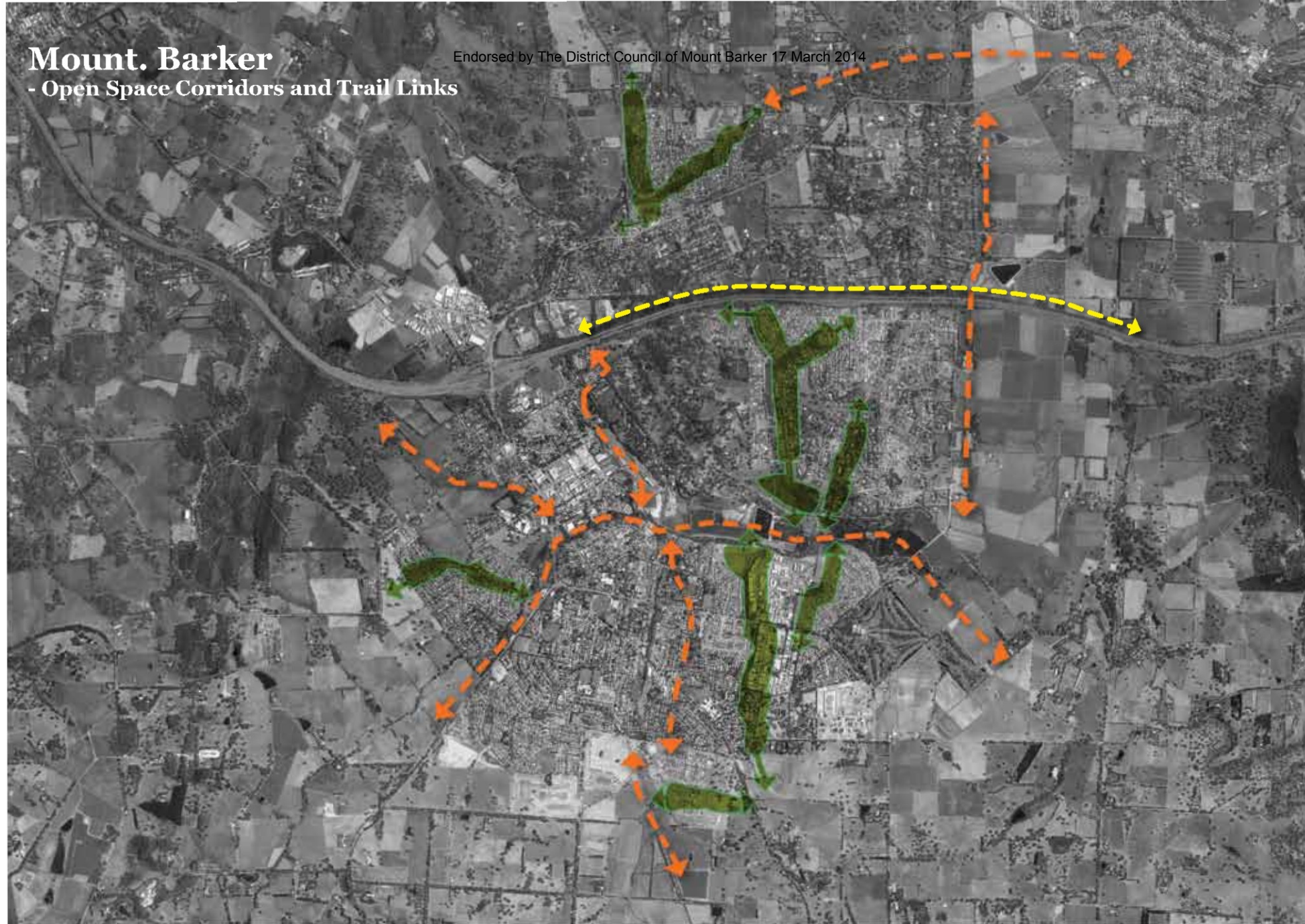
Maintain and further establish a network of corridors and connections across the District to reinforce the District's natural and historic features and support connected and healthy communities.






Mount. Barker

- Open Space Corridors and Trail Links

Endorsed by The District Council of Mount Barker 17 March 2014

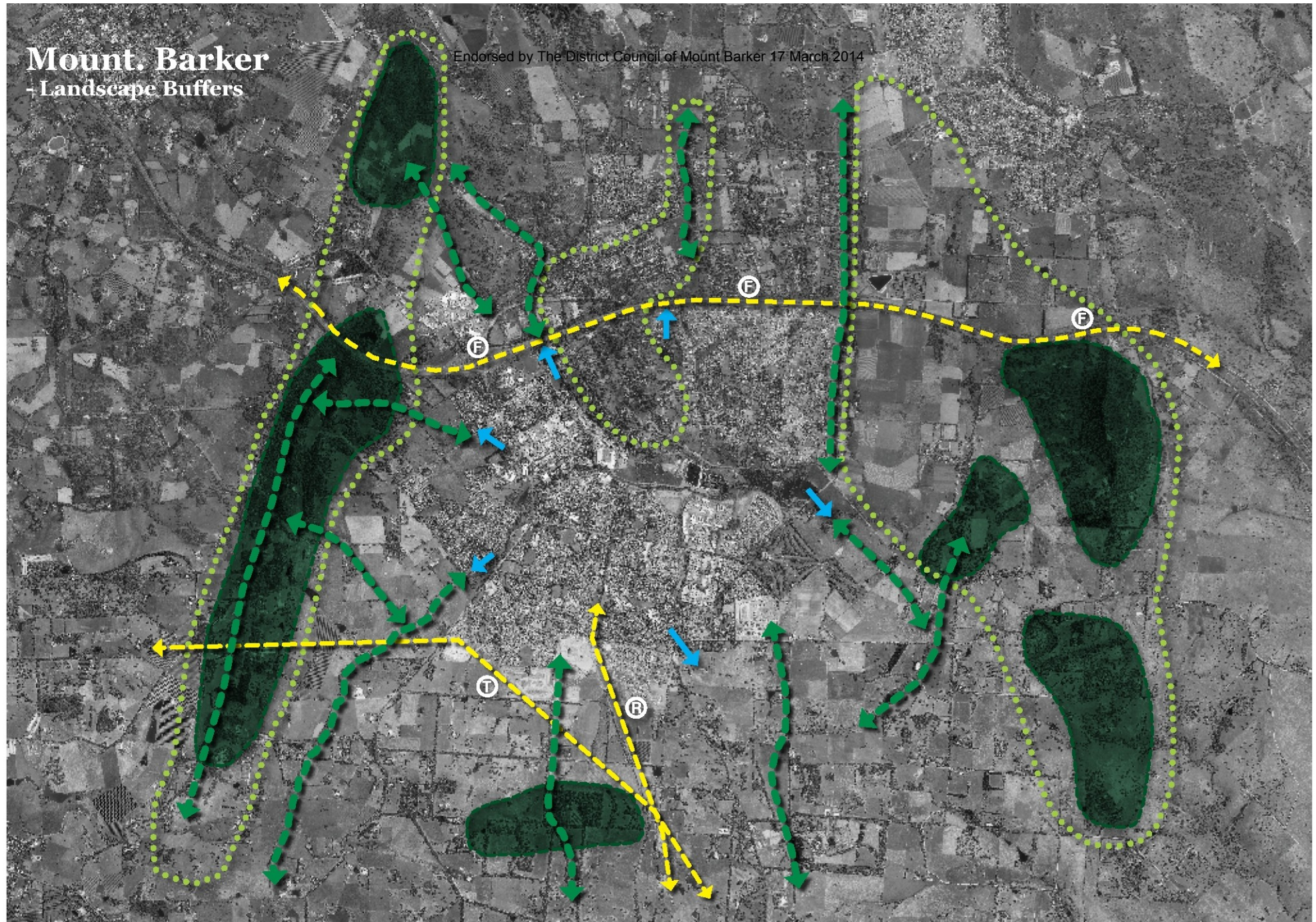


-  Open Space Corridors
-  Local Links and Trails
-  Infrastructure Corridor (potential trails)

Mount. Barker

+ Landscape Buffers

Endorsed by The District Council of Mount Barker 17 March 2014



Landscape Buffer Zones
Native Remnant Vegetation



Potential Open Space

Link to Regional Trails and Open Space

Infrastructure Corridors

(f) Transmission Line

(E) Freeway Corridor

(R) Railway Line

Principles

- The character of townships should be retained and strengthened through 'green buffers' between and around the townships using open space, greenways and green belts including through rural land zonings.
- Linear connections and pathway networks should be strengthened across the District and particularly in the growth towns to broaden the opportunities for walking, bike riding and horse riding, and support non vehicle movement across the District.
- A diversity of trail experiences and activity opportunities should be provided through different types of trails and environments across the District should be provided.
- The main existing trails in the District and the connections to these trails should be strengthened to create well defined and well used trail connections across the urban areas, townships and rural areas. This includes enhancing and promoting main trails such as the Heysen Trail and Kidman Trail.
- 'Walkability' principles should be integrated within urban and township planning (catering for cycling as well as walking). This includes:
 - Planning for a highly walkable and well connected growth towns through a network of trails, pathways and footpath connections
 - Connecting communities to key destinations such as town centres, schools and regional and district open space and facilities, through trails and pathways

Strategies

Topic	Strategy	Rationale
Green Corridors in the Growth Towns	<p>Establish greenways and open space corridors throughout the District to define urban boundaries, maintain the treed landscape character of the District and alleviate the visual impact of urban development. Opportunities for potential open space, greenways and environmental corridors include:</p> <ul style="list-style-type: none"> • Between Nairne and Mount Barker and Littlehampton • Corridor spines through the future growth towns to the east, south and west of Mount Barker linked to ridgelines, vistas, watercourse corridors and valued native vegetation • Connections to major existing and proposed open space including Keith Stephenson Park, Laratinga Wetlands, Keith Stephenson Land, Mount Barker Summit and Totness Recreation Park 	<p>Green corridors will provide a buffer between developments and enable townships to maintain their individual character. They will also contribute to reinforcing the landscapes and characteristics of the District that are most valued including the indigenous and culturally significant trees and undulating hills and vistas.</p>
Existing Trail Enhancements	<p>Maintain and improve the quality of existing trails across the District in accordance with the trails hierarchy included in the Open Space Provision and Management Framework. The identification of specific improvements will require a detailed assessment of each trail as a 'next step' using the Framework as a guide, as this has not been undertaken in previous planning or this Strategy.</p>	<p>The existing trails should be good quality and well used before additional trails are developed. Otherwise Council is at risk of establishing a large number of poor quality trails that may not benefit the community. A hierarchy approach to upgrade is suggested to ensure the appropriate level of development and resource allocation.</p>
Pathway Extensions	<p>Extend and connect existing 'disconnected' main pathways through defined footpath, road and trail connections, placing a particular emphasis on the pathways in the new estate areas around Mount Barker, Littlehampton and Nairne.</p>	<p>The Mount Barker, Littlehampton and Nairne Trails Plan highlights there are a number of disconnected pathways in the growth towns that could potentially be linked to create or be part of a connected trail and pathway network.</p>

Topic	Strategy	Rationale
Laratinga Trail Focus	<p data-bbox="808 328 1464 408">Establish Laratinga Trail and the Mount Barker Linear Park as a major green open space 'spine' and connector through the following:</p> <ul data-bbox="808 432 1464 1075" style="list-style-type: none"> <li data-bbox="808 432 1464 512">• Improve surface quality and consistency and consider ways to reduce the 'harshness' of the surface (dark, hot, unappealing) <li data-bbox="808 520 1464 600">• Improve the amenity of the trail including seating, shelter, shade, drinking water, signage and interpretation at key 'stop off' nodes <li data-bbox="808 608 1464 655">• Consider establishing a connecting trail along the southern side of the watercourse, e.g. along Mountain Glen Reserve <li data-bbox="808 663 1464 743">• Extend the connections to the east and west into the growth areas to link to future open spaces linked to Keith Stephenson Park and the Laratinga Wetlands <li data-bbox="808 751 1464 1075"> <p data-bbox="808 751 1464 791">• Establish and improve connections from the north and south through open space linkages focusing on</p> <ul data-bbox="869 799 1464 1075" style="list-style-type: none"> <li data-bbox="869 799 1464 847">• The link to Dunn Park and Anembo Park and Littlehampton in the north <li data-bbox="869 855 1464 903">• Memorial Walkway Reserve to Keith Stephenson's Park <li data-bbox="869 911 1464 959">• Waterford Estate Reserve and Alan Bell Park through to the Laratinga Trail in the north <li data-bbox="869 967 1464 1046">• Downing Reserve and Ascent Estate Reserve through to Mountain Glen Reserve in the south (crossing over the watercourse) <li data-bbox="869 1054 1464 1075">• Hurling Drive along the rail corridor 	<p data-bbox="1503 328 2157 488">The Mount Barker Linear Park is centrally located and connects or has the potential to connect major parcels of open space to the north, south, east and west. The Mount Barker Linear Park and Laratinga Trail justify being excellent quality to provide a focus for walking and bike riding and to encourage alternative transport around the growth towns.</p>
Nature Trails and the Environment	<p data-bbox="808 1094 1464 1283">Maintain and further enhance nature trails and connections to natural areas across the District with a particular focus on maintaining the nature trails and connections around Macclesfield, Prospect Hill and The Summit. This includes considering opportunities for a trail along the existing Steam Ranger railway line if the Steam Ranger ceases to operate in the future.</p>	<p data-bbox="1503 1118 2157 1222">Nature trails provide people with unique opportunities to experience the natural environment and this can contribute to strengthening tourism and a general community appreciation of and commitment to the environment.</p>

Strategies (continued)

Topic	Strategy	Rationale
Town Centre and Open Space Connections	<p>Establish and improve connections between town centres and key open space and facilities through trail, pathway and footpath connections. This will involve implementing the Mount Barker, Littlehampton and Nairne Trails Plan over time and in accordance with available resources and priorities.. The main opportunities include:</p> <ul style="list-style-type: none"> • Keith Stephenson Park through to Gawler Street (Mount Barker) • Laratinga Trail through to the Town Centre via Mann Street (Mount Barker) • Byethorne Park through to the Main Street with a link to the old railway station (Nairne) • Nairne Recreation Ground through to the Nairne Main Street (Nairne) • Battunga Park connecting to Meadows Recreation Ground and the school and town centre (Meadows) • Hahndorf Recreation Grounds through to the Main Street (Hahndorf) • Macclesfield Recreation Ground through to Davenport Square and the main street and Lord Robinson Park to the main street (Macclesfield) • Echunga Recreation Grounds connection to the town centre via the Echunga RSL Gardens • Callington Oval connection to the Bremer River and the main streets (Callington) 	<p>The town centres are a key focus for each of the townships including Mount Barker and good access to the town centres through open space connections will contribute to the overall connection within the towns.</p>
Unmade Road Reserves	<p>Investigate the potential of unmade road reserves particularly to link to major trails (Heysen Trail and Kidman Trail) and to provide opportunities for specific activities including horse riding and challenging bike riding. This will require a detailed study of the unmade road and other reserve opportunities.</p>	<p>The District has a number of unmade road reserves that could provide excellent opportunities for walking, bike riding and horse riding. Whilst there is already a good provision of trails in the District and this is not a high priority as a result, the opportunities relating to unmade road reserves should be investigated in the future to ensure opportunities are not lost.</p>

Strategies (continued)

Topic	Strategy	Rationale
Regional Connections	<p>Establish trail connections between townships, to the National Trails and to surrounding Council areas where there are opportunities for safe and appealing routes. This includes:</p> <ul style="list-style-type: none"> • Implementation of the RDA Regional Trails Plan • Connections between Nairne and Mount Barker possibly along a Freeway Corridor (as proposed in the Structure plan) and through a recreation trail via The Summit Road and The Summit • A connection between Macclesfield and Meadows connecting to the Greenhills Walk and remnant vegetation • 'Feeder' connections to the Kidman Trail • In consultation with Horse SA, identify priorities for trail enhancements and potential improved connections to existing trails. • Liaise with Forestry SA to encourage ongoing horse access to Kuitpo Forest and assist Forestry SA to enhance trails and distribute promotional material that encourages responsible user behaviour. • Investigate the potential for a quality trail along the 'rail corridor' through the centre of the Mount Barker township to link to the Mount Barker Creek Linear Park, and through to Littlehampton 	<p>Whilst there is a desire to retain the identity of Nairne, the town is at risk of becoming very isolated without cycling and pedestrian connections to the other nearby towns. The main roads between the towns are quite busy and dangerous for cyclists and other opportunities for connections need to be considered.</p> <p>A trail connection between Macclesfield and Meadows can strengthen the visitor value of these towns and provide a unique activity opportunity for residents living in the growth towns and other parts of the District.</p>
Trail Recreation Nodes	<p>Connect higher level regional and district trails to recreation nodes with activity opportunities (such as play and youth facilities), toilets, bike racks, shelter, seating, signage and drinking water at key locations. Opportunities include:</p> <ul style="list-style-type: none"> • Develop a shared use trail with nodes of activated space to an appropriate standard through Mountain Glen with strong links to the Laratinga Trail (Mount Barker) • Further enhance Laratinga Wetlands and Keith Stephenson Park to cater for cyclists and walkers (e.g. bike racks, drinking water, shelters) • Establish Davenport Square in Macclesfield as an appealing stop off area for the Kangowirranilla Trail • Consider potential use of Crystal Lake • Establish Echunga Recreation Grounds as a stop off area for the Kangowirranilla Trail, Echunga Creek Walk and Kidman Trail (including facilities for horse riders) 	<p>Recreation bike riding and walking often involve people stopping to rest and pursue other activities given the 'unhurried' nature of the activities. As a result there is a need for facilities in appealing settings to support activities. In addition, the provision of appealing parks with activity opportunities and links to trails can generate walking and cycling activities (encouraging people to visit the parks by bike or as a pedestrian).</p>

Theme 5: Sustainable Environments

Key Findings

Natural Area Provision

Whilst the District of Mount Barker appears to have a large amount of natural open space with 158 hectares of natural areas, it is important to realise that this only represents 0.27% of the total land area of the District. The large geographical area of the District (594.6 square kilometres) justifies having a good provision of natural open space and there could be justification to increase the provision to protect significant natural areas if required. As the District becomes more developed it will be important to maintain and protect natural environments and associated habitat and native fauna.

Natural Area Management

The relatively small rate base in the District of Mount Barker limits the resources available for managing natural areas. As the population increases and communities become more aware of issues with the environment a greater emphasis on natural area management is likely to be required.

Volunteers through 'Bush for Life' and 'Friends Of' groups provide an important contribution towards the management of natural areas. The ongoing allocation of resources to support volunteer activities and enable additional volunteer recruitment is essential.

Watercourse Quality

The District of Mount Barker has a number of watercourses that add to the unique character and environmental diversity of the District. However, the quality of some watercourses is an issue with overgrown weeds and rubbish accumulation worsening as areas become developed and run off from the built environment increases. This impacts on the condition of water quality and the aesthetics of watercourses.

The watercourses require revegetation with native riparian species including shade trees to enhance the watercourse quality and reduce reeds. In the past, native vegetation has been removed around watercourses and replaced with deciduous species. Improved development practices are also required to reduce the amount of silt and rubbish entering the watercourses.

Key Natural Areas

The District has some large and significant natural areas that are particularly valued by the community or have the potential to be a major resource in the future. The Summit, Totness Recreation Park and the Laratinga Wetlands are particularly important resources that justify a commitment to protection and enhancement.

Access to Natural Environments

There is a need to support but also manage access to natural environments to enable the community to experience the natural environment whilst protecting biodiversity. An increased commitment to defined pathways linked to appropriate infrastructure is required for this to be achieved.

Landscape Character

Three local plant bioregions have been defined by Council to reflect soil type, rainfall and plant species across the District including the Central Bioregion, Eastern Bioregion and Western Bioregion. Maintaining and strengthening the landscape character of the bioregions, including tall trees and tree canopies in the growth towns, will be important if the District wishes to retain its distinctive and valued natural characteristics. This includes establishing sustainable landscapes that are suitable for climatic conditions and resilient to climate change. Opportunities also exist to recognise Aboriginal cultures with existing and proposed landscape character.

Culturally Significant Trees

The District of Mount Barker is defined by its culturally significant tall trees including native and exotic trees. In recognition of the importance of these trees Council has developed 'Culturally Significant Trees Assessment and Management Guidelines 2012' and is keen to identify, maintain and further establish culturally significant trees as part of open space and streetscape planning and enhancements.

Landscape in New Developments

Landscapes in new development areas should aim to be sustainable and affordable from an ongoing management perspective. This includes landscaping new developments to increase the use of low water dependant and local native species. However, a number of the new development areas around Mount Barker have highly manicured landscapes with a lack of large tree species. Neighbourhoods may be less appealing and future maintenance costs and resource requirements could be high as a result.

Water Sensitive Urban Design

As the District and particularly the growth towns become developed there is a need to manage stormwater within the developments to minimise impacts of existing infrastructure. Various approaches to water detention and retention have been adopted in the District over the years. There are some good examples where water has been retained to create appealing water bodies that enhance the open space such as Laratinga Wetlands but there are also some poor examples where water bodies consume the open space and reduce the quality and usability of the space such as in Mathew Smillie Park. A consistent and coordinated approach to Water Sensitive Urban Design that enhances the quality of open spaces and contributes to the ecological health of the environment is required.

Opportunities are being considered to establish additional wetlands and water bodies linked to future development areas. Council supports the development of multi-use detention basins provided they are functional and contribute to creating appealing open spaces. However, including water bodies as part of the 12.5% of open space provided within new development areas may not be appropriate. Wetlands should not be established within watercourses as this impacts on water quality treatment.

As towns develop and change there are opportunities to design open space, recreation and the public realm to include greater use of water sensitive urban design and associated landscape features.

Climate Change Considerations

Council recognises the potential impacts of climate change and is keen to adopt a proactive approach to mitigating and adapting to climate change, including the use of plant species that will adapt to changing climatic conditions, the integration of energy efficient structures and systems and the management of water use (conservation).

The use of green roofs and walls, shade structures and innovative landscaping such as arbors and green curtains should be considered to soften the built form and reduce the urban heat island effect.

Information, Interpretation and Education

There is potential to strengthen information and interpretation associated with natural areas including to educate the community regarding environmental initiatives and strengthen community awareness and commitment to maintaining and enhancing the natural environment.

Landscape Management

The quality of open space is impacted on by approaches to irrigation, maintenance and management. However, a hierarchy approach to landscape development and management is required as Council does not have the resources to maintain all landscapes to the same high standard.

Overriding Direction: provide, design, enhance and manage natural environments and natural features to contribute to the sustainability of the environment and the District.



Principles

- The value of the natural environment should be recognised and natural areas and natural features should be maintained, increased, enhanced and protected where appropriate.
- A strategic approach to tree management and sustainable landscape design should be adopted to achieve viable, functional and resilient landscapes.
- Access to natural environments should be defined and managed to benefit the environment and the community experience.
- Recreation and sport facilities should aim to enhance and encourage conservation and biodiversity. There should be a balanced provision that respects and complements conservation and facility design and location should be consistent with good sustainability practices.
- Landscapes and streetscapes should be established and maintained to enhance the distinctive character of townships and the District and to improve livability.
- An emphasis should be placed on identifying, maintaining and establishing culturally significant trees including native and exotic trees and landscapes.
- Development in the District should consider ecological assets and emphasise ecologically Sustainable Development principles at all times.

Strategies

Topic	Strategy	Rationale
Environmental Planning	Update Council's Environmental Plan to guide the provision and management of natural areas.	The natural environment is an important asset that justifies up to date planning.
Increased Natural Areas	Continue to identify and protect natural areas and remnant vegetation and incorporate natural areas within the open space system and through land zoning aimed at protecting the land. This will include a survey and audit of remnant vegetation that should be protected within the growth areas.	Whilst the District of Mount Barker has a relatively large amount of natural area this is only a small proportion of the District and there would be justification to add land parcels that have significant environmental value. Sections of the proposed growth towns have significant remnant vegetation that should be protected.
Natural Area Enhancement	Pro-actively manage natural areas and native vegetation including weed and rubbish removal, defined tracks, infrastructure such as seating and shelter and interpretation. Opportunities include: <ul style="list-style-type: none"> • Mt Barker Summit (regeneration and enhanced access) • The Gummy Track (management to existing high quality) • Coppins Bush Reserve (management and enhancements) • Blueberry Hill Reserve (management and enhancements) • Lord Robinson Park (management and enhancements) • Totness Recreation Park (management and enhancements) 	The significance and high profile of a number of natural areas justifies a commitment to management and enhancement. The quality of bush land areas will decline over time without a commitment to active management and enhancement.
Watercourse Rehabilitation	Undertake watercourse rehabilitation over time and replace inappropriate plantings such as exotic trees and weeds with locally indigenous riparian vegetation. The Mount Barker Creek and other watercourses leading to Mount Barker and around the growth towns should be a particular priority.	A number of watercourses in the District are in poor condition and are overgrown with weeds. The main watercourses around growth towns are integrated with stormwater management systems and flood protection.

Strategies (continues)

Topic	Strategy	Rationale
Tree Management	Develop a Tree Strategy that guides the planning, establishment and management of trees in open space and streets. This includes identifying culturally significant trees and managing the trees in accordance with Councils Culturally Significant Trees Assessment and Management Guidelines.	Within open space Council recognises the importance of culturally significant trees within open space, recreation and public realm .
Laratinga Wetlands Enhancement	<p>Further enhance Laratinga Wetlands reserve areas for walking, picnics and family activity in accordance with the Laratinga Management Plan, including:</p> <ul style="list-style-type: none"> • Continue to establish signage and interpretation around the site and further develop walking tracks and opportunities for passive recreation that connect people to nature • Establish some additional picnic settings linked to activity and education nodes • Investigate opportunities to connect some picnic areas to car parking to support access by older people and people with a disability 	The Laratinga Wetlands is an important natural setting that provides a well used and appreciated recreational and educational resource. There are opportunities to further enhance the natural value and community appreciation of the site.
Additional Natural Settings for Recreation	<p>Investigate the potential to establish additional natural settings including:</p> <ul style="list-style-type: none"> • Consider establishing a wetland area with recreation nodes and opportunities for walking, bike riding and picnics in the southern or western growth areas of the Mount Barker Township (linked to stormwater management) • Investigate the potential to establish a passive recreation and educational setting linked to the Blueberry Hill site (Hahndorf) 	The value of Laratinga Wetlands is high and ideally there would be other similar settings established in key locations.
Managed Access	Establish defined trails and infrastructure to support managed access to key natural areas that justify community use, including enhancements to the Mount Barker Summit and The Ponds land outside of Macclesfield.	Managed access will ensure communities are able to experience the natural environment while the environment is appropriately protected.

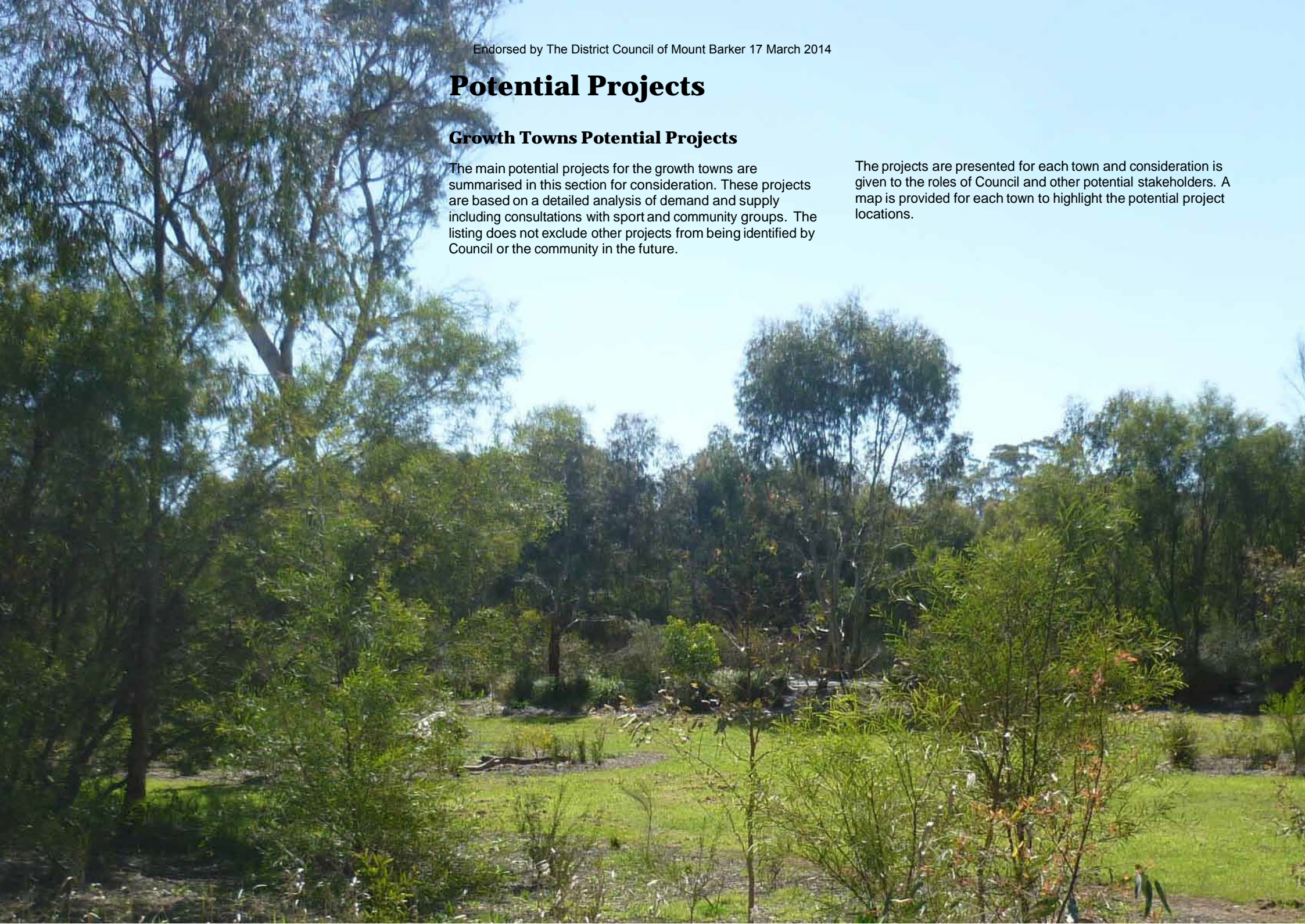
Topic	Strategy	Rationale
Green Infrastructure	Design green infrastructure that allows the establishment and growth of trees and vegetation and the development of long term landscape assets using the Public Realm and Urban Design Framework. This could include soil vaults, green roofs, green walls and the integration of water sensitive urban design linked to infrastructure	Appropriate and innovative green infrastructure will be required to achieve appropriate tree plantings and landscape treatments in new development areas, existing streets and other urban areas.
Cemeteries	Develop a management plan for each cemetery that reflects hierarchy and maintains the heritage and natural value of the cemetery.	Cemeteries have significant heritage and natural value that should be retained.
Community Involvement	Establish and strengthen programs aimed at involving communities in environmental projects and enhancements to natural areas. This includes establishing and building on community volunteer programs and environmental projects and considering community initiatives such as 'adopt a tree and school' programs in urban areas.	Council does not have the resources to maintain all natural areas and increased community involvement in environmental initiatives will be important.
Water Sensitive Urban Design	Design off stream stormwater retention and detention systems that encourage infiltration and contribute to high quality and usable open spaces using the Public Realm and Urban Design Framework provided in the Guideline Report (Report 3) to achieve integrated and valued water bodies and spaces.	The past design of stormwater systems has resulted in water bodies dominating sites and poor quality and poorly designed open spaces. There is potential to improve the design and quality of stormwater areas.
Landscape Character	<p>Establish trees and landscapes within open spaces and streetscapes that are consistent with and enhance the environmental and cultural context of the township and are sustainable. This will include:</p> <ul style="list-style-type: none"> • Maintain and plant indigenous, native and exotic trees and plants in accordance with defined landscape heritage • Ensure plantings are consistent with the District's local plant bioregions and cultural landscape character • Establish urban woodlands and forests that integrate ecological opportunities within urban areas • Design open spaces and streetscapes in the growth towns to include large tree species that will mature to provide a significant landscape asset in the future • Ensure plantings are resilient to climate conditions and climatic change 	Quality and sustainable landscape character will contribute to the quality and appeal of the character of townships and the District. Exotic and native vegetation are both part of the Adelaide Hills region's cultural heritage.

Potential Projects

Growth Towns Potential Projects

The main potential projects for the growth towns are summarised in this section for consideration. These projects are based on a detailed analysis of demand and supply including consultations with sport and community groups. The listing does not exclude other projects from being identified by Council or the community in the future.

The projects are presented for each town and consideration is given to the roles of Council and other potential stakeholders. A map is provided for each town to highlight the potential project locations.





Growth Towns - Mount Barker

Theme

Sport and Recreation



Potential Projects

- 1.1 Plan for two to three new sports grounds including a regional multi-use community and sport hub on the Council Land on Springs and Bald Hills Roads (ex Stephenson) and at least one other sports ground. Give consideration to the suitability of the Polo Club land and other land towards the south west of the township. The users of The Showground and Dunn Park could be relocated to the new sports grounds to enable alternative use of these spaces.
- 1.2 Liaise with schools and education bodies to establish and improve the quality of community use school facilities.
- 1.3 Enhance Keith Stephenson Park and consider increasing the park space to the south as demand for the park increases (in accordance with the population increase). In particular enhance the connection to the water body, enhance picnic facilities and broaden play, activity and event opportunities.
- 1.4 Review the suitability and need to develop the Showgrounds as an activated recreation hub that may include quality aquatic and indoor sport facilities, fitness and physical activity opportunities and recreation and event facilities and spaces.
- 1.5 Plan for urban parks in the Mount Barker Town Centre in accordance with the Town Centre Master Plan.
- 1.6 Plan for 2-3 regional play spaces linked to key recreational parks such as Keith Stephenson Park and linked to a community and sports hub on the Council Land on Springs and Bald Hills Roads (ex 'Stephenson).
- 1.7 Redesign the Mount Barker skate park enhance the appeal of the facility, broaden activity opportunities and improve security. This could include additional shade, seating, lighting and increased exposure (eg. opening up part of the skate structure towards Adelaide Road and pathway links). Review the location of the facility at the end of its useful life (15-20 years time).

Potential Roles

Initiator, Leadership, Partner (Council) State Government planning and funding
Community involvement and funding Initiator

Leadership, Partner (Council)
School and education body support commitment and funding

Initiator, Leadership, Partner (Council)
State Government planning and funding

Initiator, Leadership, Partner (Council)
State Government planning and funding
Potential private sector involvement

Initiator, Leadership, Partner (Council)
State Government planning and funding

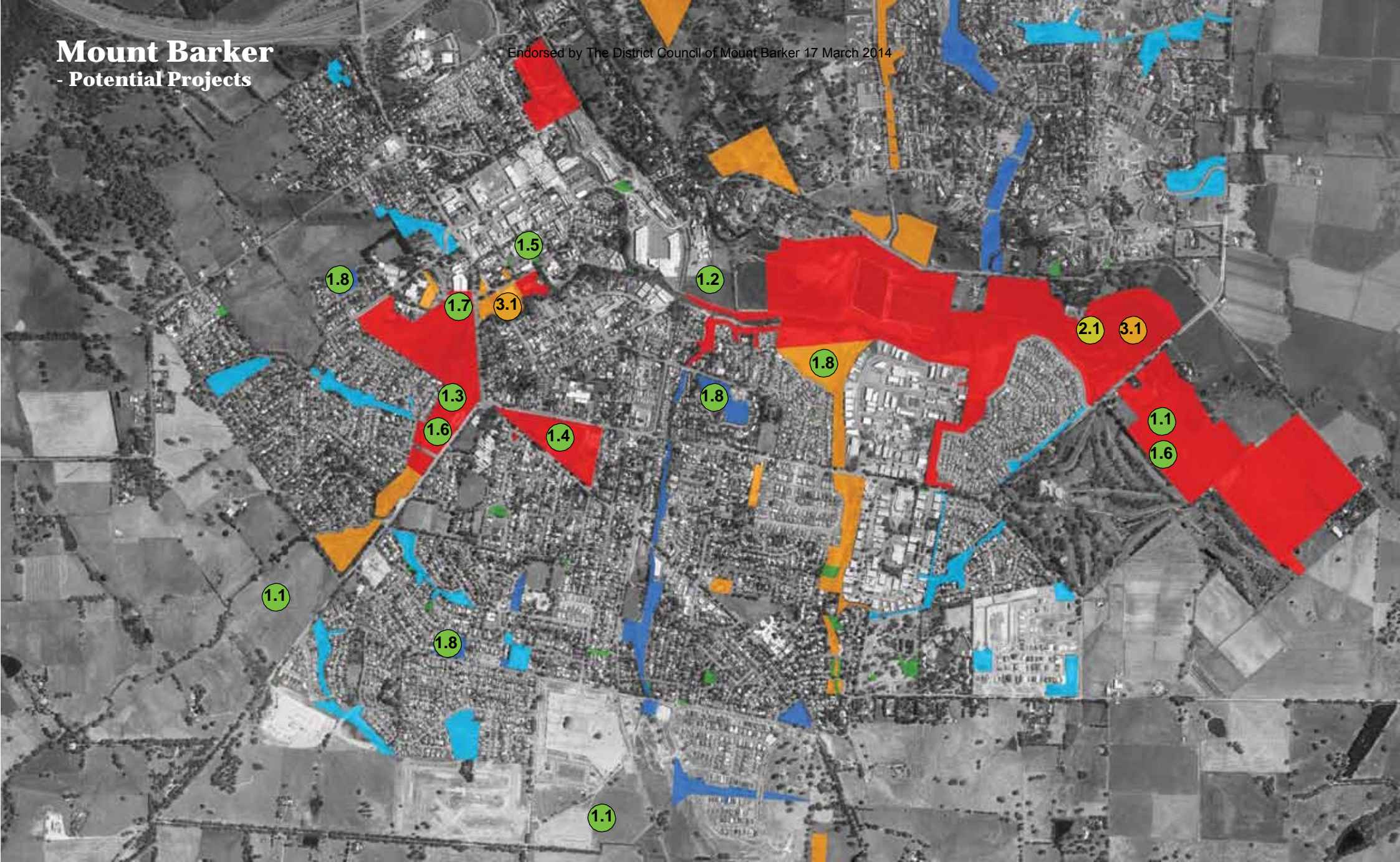
Initiator, Leadership, Partner (Council)
State Government planning and funding

Initiator, Leadership (Council) State Government funding

Mount Barker

- Potential Projects

Endorsed by The District Council of Mount Barker 17 March 2014



- | | | | |
|--|--------------------------|---|---------------|
|  | Regional |  | Neighbourhood |
|  | District |  | Local |
|  | High Level Neighbourhood | | |

500m



Theme

Sport and Recreation



Potential Projects

- 1.8 Ensure equity of provision of neighbourhood parks by upgrading any identified as being significantly below the standard provision. Ensure the quality of the standard of neighbourhood parks within existing areas and in new residential areas.

Potential Roles

Initiator, Leadership, Partner (Council)
State Government funding

Sustainable Environments



- 2.1 The specific facilities and infrastructure should be determined through master plan exercises in consultation with surrounding communities.
 - 2.2 Further enhance the Laratinga Wetlands to support walking, cycle connections, picnics and education activities through trails, shelter, seating and interpretation.
 - 2.3 Undertake improvements to the Mount Barker Summit including trail improvements, bushland regeneration, visitor facilities and improved interpretation.
- Incorporate green infrastructure and WSUD principles as key components of redevelopment projects in the town centre to soften the built form and create livable and sustainable urban environments.

Initiator, Leadership, Partner (Council)
State Government funding
Community involvement in projects

Initiator, Leadership, Partner (Council)
State Government funding
Community involvement in projects

Initiator, Leadership, Partner (Council)
State Government funding

Theme

Connections & Buffers



Potential Projects

- 3.1** Undertake improvements to the Laratinga Trail including:
- Surface upgrade, stop off areas with seating and shelter, and signage improvements to the existing trail
 - Extend the Trail to the east and west to link to existing open space and create a focus for additional future open space along the Mount Barker Creek and Western Flat Creek
 - Consider establishing a trail on the southern side of the Mount Barker Creek linked to the Mountain Glen Reserve and establish crossings to the northern side
 - Define a pathway link through the Memorial Walkway Reserve to Keith Stephenson's Park
 - Establish north south trail connections to the Laratinga Trail including links to the Waterford Estate Reserve, Alan Bell Park and Ascent Estate Reserve and beyond
 - Improve the trail connection from Keith Stephenson Park and the Laratinga Trail through to Gawler Street and the town centre
- 3.2** Extend and connect 'disconnected' pathways around the new estate areas with links to the main trails.
- 3.3** Establish walking tracks and bikeways to key natural areas including The Mount Barker Summit and Totness Recreation Park.

Potential Roles

Initiator, Leadership, Partner (Council)
State Government funding
Community involvement in projects

Initiator, Leadership (Council)
State Government funding
Private sector involvement (estates)
Community involvement in projects

Initiator, Leadership, Partner, Advocate (Council)
Agency commitment (NPWS)
Community involvement in projects





Growth Towns - Littlehampton

Theme

Sport and Recreation



Potential Projects

1.1 Undertake improvements to Anembo Park to reinforce the regional sports hub focus of the sports ground. Potential options include shared-use clubroom upgrade, car park upgrade, the development of a 12 court tennis complex (underway), the development of a water based hockey field and improvements to the softball diamonds.

1.2 Look at future use of the Glebe land to maximize community benefit and where possible look at partner organisations to develop the site.

1.3 Enhance Miels Park to provide a central focus for town activities including some play opportunities.

1.4 Seek a shared-use and partnership arrangement with the Littlehampton Primary School to enable community access to the oval for recreation use outside of school hours.

2.1 Extend and connect 'disconnected' pathways including a connection from Miels Reserve through to the town centre.

3.1 Establish 'gateway statements' through landscape, art works and other design features to create a stronger sense of arrival to the township.

3.2 Undertake main street improvements in accordance with the Public Realm and Urban Design Framework.

4.1 Support community efforts to manage and protect native vegetation areas including Coppins Bush Reserve and Turners Bush Reserve.

4.2 Liaise with DENR to enhance the accessibility, quality and usability of Totness Park for bushwalking and environmental education.

Potential Roles

Initiator, Leadership, Partner (Council)
State Government funding
Community contribution

Initiator, Leadership, Partner (Council)
State Government planning and funding
Community contribution

Initiator, Leadership (Council)
Community involvement

Potential private sector involvement
Initiator, Leadership, Advocate, Partner (Council)
School support and contribution

Initiator, Leadership, Partner (Council)
State Government funding
Community involvement in projects

Initiator, Leadership, Partner (Council)
State Government funding
Community involvement in projects

Initiator, Leadership, Partner (Council)
State Government funding
Potential private sector involvement
Community involvement in projects

Initiator, Leadership, Partner (Council)
Community involvement in projects

Initiator, partner (Council)
State Government funding
Community involvement

Connections & Buffers



public Realm & Township Character



Sustainable Environments



Littlehampton

- Potential Projects

Endorsed by The District Council of Mount Barker 17 March 2014



500m



*“If the public open space is the most visible indicator
of the health and vitality of our cities
and by the same token the health our communities,
then the future planning and delivery of quality open space is critical”*



Growth Towns - Nairne

Theme

Sport and Recreation



Potential Projects

- 1.1 Maintain and enhance the existing Nairne sports ground and sports facilities including additional grassed training and juniors areas and improvements to the main club room and car parking.
- 1.2 Investigate establishing alternate ovals for use by Nairne sports club where the sports ground remains the home ground but overflow games are held at a second satellite venue.
- 1.3 Undertake further improvements to Byethorne Park including investigating the potential to expand the park and realign the car parking to create additional usable activity spaces. The park could then include a skate facility to replace the facility in Jeffrey Street Reserve.
- 1.4 Redesign and better connect Jeffrey Street Reserve and Mick Murphy Park to create an appealing town centre park with an improved play space, upgraded and less dominant town centre toilets and picnic facilities. In addition, the number of tennis courts could be reduced. Detailed master planning in consultation with the community will be required.
- 1.5 Ensure residents of Nairne have equitable access to developed public open space.
- 1.6 Undertake moderate improvements to Matthew Smillie Park including improvements to the water body and enhanced play space and natural shade.

Potential Roles

- Leadership, Partner (Council)
State Government funding
Community contribution
- Initiator, Leadership, Partner (Council)
State Government planning and funding
- Initiator, Leadership, Partner (Council)
State Government funding
- Initiator, Leadership, Partner (Council)
State Government funding
- Initiator, Leadership, Partner (Council)
State Government funding
Community involvement in projects
- Initiator, Leadership, Partner (Council)
State Government funding
Community involvement in projects

public Realm & Township Character



- 2.1 Undertake main street improvements in accordance with the Public Realm and Urban Design Framework.

- Initiator, Leadership, Partner (Council)
State Government funding
Potential private sector involvement

Theme

Connections & Buffers



Potential Projects

- 3.1 Extend and connect 'disconnected' pathways including a connection from Byethorne Park through to the town centre via the old railway station and extension of the pathway from the Nairne Recreation Ground to the main street.
- 3.2 Undertake detailed planning for trail connections between Nairne and Mount Barker, including options for a Freeway Corridor and a connection via the Mount Barker Summit.

Potential Roles

Initiator, Leadership, partner (Council)
State Government funding
Community involvement in projects

Initiator, Leadership, Partner (Council)
State Government funding
Agency involvement (bike, walking, horse groups)
Community involvement in projects

Sustainable Environments



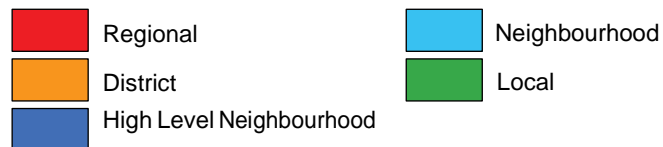
- 4.1 Continue to revegetate and add habitat to reserves and creek lines including in Byethorne Park and Matthew Smilie Reserve.

Initiator, Leadership, partner (Council)
State Government funding
Community involvement in projects

Nairne

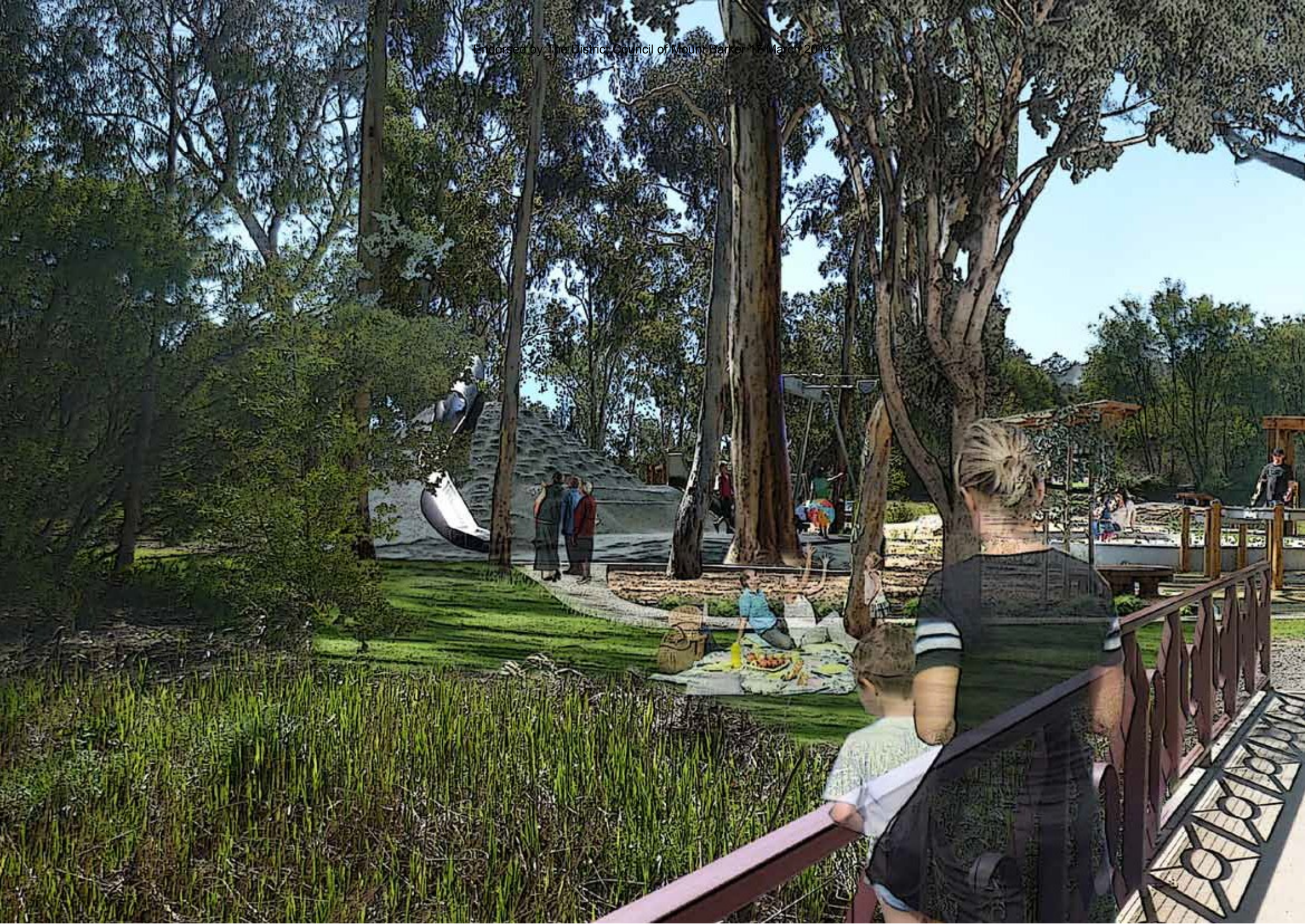
- Potential Projects

Endorsed by The District Council of Mount Barker 17 March 2014



400m







All Growth Towns

Theme

Sport and Recreation



Potential Projects

- 1.1 Establish a higher level innovative and creative play space in each township linked to higher level parks.
- 1.2 Establish skateable spaces (urban skating) in each township linked to higher level parks.
- 1.3 Consider establishing other activity opportunities including BMX, ball games areas (net and hard court options), scooter areas, exercise equipment and outdoor public table tennis tables within the regional and district destination recreation parks where appropriate.
- 1.4 Investigate sites for community gardens and community orchards strategically located in the growth towns. Consider higher profile locations linked to other recreation spaces.
- 1.5 Establish some dog off leash exercise areas (not necessarily fenced) in the growth towns giving consideration to larger, easily accessible and safe sites.

Potential Roles

Initiator, Leadership, Partner (Council)
State Government funding

Initiator, Leadership, Partner (Council)
State Government funding

Initiator, Leadership, Partner (Council)
State Government funding

Initiator, Leadership, Partner (Council)
Community involvement

Initiator, Leadership (Council)
Community involvement

Theme

public Realm & Township Character



Potential Projects (General)

Undertake public realm improvements in accordance with the Public Realm and Urban Design Framework.

Potential Roles

Initiator, Leadership, Partner (Council)
State Government funding
Potential private sector involvement
Community involvement in projects

Sustainable Environments



Undertake watercourse rehabilitation in accordance with community and environmental priorities, with a particular focus on the Mount Barker Creek and Western Flat Creek.

Undertake sustainable tree planting and landscape improvements that enhance and contribute to retaining the character of the growth towns. Give consideration to appropriate green infrastructure and culturally significant trees (native and exotic).

Undertake a survey of native vegetation and culturally significant trees in the growth areas and identify priorities for protection.

Initiator, Leadership, Partner (Council)
State Government funding
Community involvement in projects

Initiator, Leadership, Partner (Council)
State Government funding
Community involvement in projects

Initiator, Leadership, Partner (Council)
State Government funding
Community involvement in projects

Other Townships Potential Projects

This section includes potential projects for other townships in the District of Mount Barker. These projects are based on a detailed analysis of demand and supply including consultations with sport and community groups. The townships are presented in alphabetical order and the listing does not exclude other projects from being identified by Council or the community in the future.



Callington Hotel



Callington

- Potential Projects

Endorsed by The District Council of Mount Barker 17 March 2014



Callington

Theme

Sport and Recreation



Connections & Buffers



public Realm & Township Character



Sustainable Environments



Potential Projects

- 1.1 Undertake agreed improvements to the Callington Recreation grounds
- 1.2 Create and enhance activity opportunities linked to the Callington Oval surrounds including a focus on children, youth and families (BMX, play, picnic). Promote shared use with Callington School.
- 2.1 Develop trail connections from Callington Oval to the Bremer River and the main streets.

- 3.1 Undertake public realm improvements in accordance with the Public Realm and Urban Design Framework.
- 3.2 Undertake main street improvements in accordance with the Public Realm and Urban Design Framework.
- 4.1 Support community Bremer River rehabilitation efforts.

Potential Roles

Leadership, Partner (Council)
State Government funding
Community contribution

Leadership, Partner (Council)
State Government funding
Community contribution

Initiator, Leadership, Partner (Council)
State Government funding
Community involvement in projects

Initiator, Leadership, Partner (Council)
State Government funding
Potential private sector involvement
Community involvement in projects

Initiator, Leadership, Partner (Council)
State Government funding
Potential private sector involvement
Community involvement in projects

Initiator, Leadership, Partner (Council)
State Government funding
Community involvement in projects

Regional

District

High Level Neighbourhood

Neighbourhood

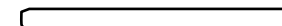
Local

200m

Echunga

- Potential Projects

Endorsed by The District Council of Mount Barker 17 March 2014



Echunga

Theme

Sport and Recreation



Potential Projects

1.1

Undertake improvements to the Echunga Recreation Grounds in accordance with the sports business plan.

1.2

Enhance activity opportunities linked to the Echunga Recreation Grounds surrounds, including providing a stop off area for horse riders and enhancing play, BMX and bike and picnic facilities.

Main Roles

Leadership, Partner (Council)
State Government funding
Community contribution

Leadership, Partner (Council)
State Government funding
Community contribution

public Realm & Township Character



2.1

Undertake public realm improvements in accordance with the Public Realm and Urban Design Framework.

Initiator, Leadership, Partner (Council)
State Government funding
Potential private sector involvement
Community involvement in projects

Sustainable Environments



3.1

Support the community to manage and protect native vegetation areas including Echunga cemetery and Stringybark Reserve.

Leadership, Partner (Council)
State Government funding
Community contribution

Regional

Neighbourhood

District

Local

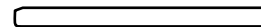
High Level Neighbourhood

300m

Hahndorf

- Potential Projects

Endorsed by The District Council of Mount Barker 17 March 2014



Hahndorf

Theme

Sport and Recreation



Potential Projects

- 1.1 Undertake improvements to the Hahndorf Recreation Grounds in accordance with the sports business plan and improve BMX at the site (with potential relocation).
- 1.2 Undertake improvements to key parks including Alec Johnson Park and Pioneer Memorial Gardens in accordance with the Master Plan giving particular priority to reducing the dominance of toilets and creating usable spaces for people to sit and relax, eat food, and enjoy and connect to the main street environment.
- 2.1 Improve connections from the Hahndorf Recreation Ground to the town centre.

Main Roles

Leadership, Partner (Council)
State Government funding
Community contribution

Initiator, Leadership, Partner (Council)
State Government funding
Community involvement

Initiator, Leadership, Partner (Council)
State Government funding

Connections & Buffers



public Realm & Township Character



- 3.1 Undertake public realm improvements in accordance with the Hahndorf Main Street Plan and the Public Realm and Urban Design Framework ensuring the heritage values and qualities of the township are maintained.

Initiator, Leadership, Partner (Council)
State Government funding
Potential private sector involvement
Community involvement in projects

Sustainable Environments



- 4.1 Support the community to manage and protect native vegetation areas including adjacent Hahndorf Recreation Ground, Yantaringa Reserve and other community revegetation projects.
- 4.2 Investigate opportunities to establish a passive recreation and conservation setting as part of the Blueberry Hill site and in accordance with the Management Plan.

Leadership, Partner (Council)
Community involvement in projects

Initiator, partner (Council)
State Government funding
Community involvement

Regional

Neighbourhood

District

Local

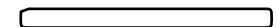
High Level Neighbourhood

300m

Macclesfield

- Potential Projects

Endorsed by The District Council of Mount Barker 17 March 2014



Macclesfield

Theme

Sport and Recreation



Potential Projects

- 1.1** Undertake improvements to the Macclesfield Recreation Grounds in accordance with the sports business plan.
- 1.2** Undertake improvements to Davenport Square in accordance with the Davenport Square Master Plan and giving particular priority to enhancing play creativity, providing facilities for youth (skate, ball games), providing picnic settings and improving the landscape (additional trees and shade).
- 1.3** Investigate options for developing and managing Crystal Lake Reserve as part of a Master Plan exercise in consultation with the community and potential stakeholders.
- 2.1** Improve connections from the Macclesfield Recreation Ground to Davenport Square and the town centre.
- 2.2** Investigate establishing a trail connection between Macclesfield and Meadows linking to the Greenhills Walk.
- 3.1** Undertake public realm improvements in accordance with the Public Realm and Urban Design Framework.
- 3.2** Undertake main street improvements in accordance with the Public Realm and Urban Design Framework.
- 4.1** Support the community to manage and protect native vegetation areas including the Day Paddock, Macclesfield Cemetery, Gummy Track and Lord Robinson Reserve.

Main Roles

- Leadership, Partner (Council)
State Government funding
Community contribution
- Initiator, Leadership, Partner (Council)
State Government funding
Community contribution and involvement in projects
- Initiator, Leadership, Partner (Council)
State Government funding
Potential private sector involvement
Community involvement in projects
- Initiator, Leadership (Council) State Government funding
Community involvement in projects
- Initiator, Leadership (Council) State Government funding
Community involvement in projects
- Initiator, Leadership, Partner (Council)
State Government funding
Potential private sector involvement
Community involvement in projects
- Initiator, Leadership, Partner (Council)
State Government funding
Potential private sector involvement
Community involvement in projects
- Leadership, Partner (Council)
Community contribution and involvement in projects

Connections & Buffers



public Realm & Township Character



Sustainable Environments



Regional

Neighbourhood

District

Local

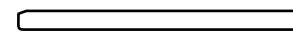
High Level Neighbourhood

200m

Meadows

- Potential Projects

Endorsed by The District Council of Mount Barker 17 March 2014



Meadows

Theme

Sport and Recreation



Connections & Buffers



public Realm & Township Character



Sustainable Environments



Potential Projects

- 1.1 Complete and maintain the upgrade of Battunga Park.
- 1.2 Undertake detailed planning and review the options for the Meadows Recreation Ground in consultation with the sporting groups. Detailed analysis was beyond the scope of this study.
- 2.1 Create a more direct connection from Battunga Park to the Meadows Recreation Ground.
Ensure off road trail linkages from new residential developments to Battunga Park and the main street.
- 3.1 Undertake public realm and main street improvements in accordance with the Main Street Masterplan and Public Realm and Urban Design Framework.
- 3.2 Establish 'gateway statements' through landscape, art works and other design features to create a stronger sense of arrival to the township.
- 4.1 Support community projects linked to natural areas such as nearby Survey Hill Reserve

Main Roles

Initiator, Leadership, Partner (Council)
State Government funding
Community involvement in projects

Leadership, Partner (Council)
State Government funding
Community contribution

Initiator, Leadership (Council)
State Government funding

Initiator, Leadership, Partner (Council)
State Government funding
Potential private sector involvement
Community involvement in projects

Initiator, Leadership, Partner (Council)
State Government funding
Potential private sector involvement
Community involvement in projects

Partner (Council)
Community contribution and involvement in projects

Regional

Neighbourhood

District

Local

High Level Neighbourhood

200m

Other Towns

Theme

Sport and Recreation



Potential Projects (General)

- 1.1 Undertake planning for and assess the feasibility of an equestrian centre in consultation with equestrian groups.
- 1.2 Maintain Hutton Reserve Kanmantoo to a good standard.
- 1.3 Enhance Brukunga Reserve (enhance play space and fencing and increase trees and natural shade).
- 2.1 Investigate the opportunities for trails developed through unmade road reserves.

Main Roles

Leadership, Partner (Council)
Agency involvement (Horse SA)
State Government funding
Community contribution

Leadership, Partner (Council) State
Government funding Community
involvement in projects

Leadership, Partner (Council) State
Government funding Community
involvement in projects

Leadership, Initiator, Advocate (Council)
State Government funding
Agency involvement (bikes, walking, horse groups)

Connections & Buffers



public Realm & Township Character



- 3.1 Undertake public realm improvements in accordance with the Public Realm and Urban Design Framework.

Initiator, Leadership, Partner (Council)
State Government funding
Potential private sector involvement
Community involvement in projects

*“It may not be crowding per se that degrades us,
but a lack of relief from crowding,
a lack of open space, a lack of green,
of nature going its own way”*



charles little and John Mitchell, space for survival, 1971

Implementing The Strategy

The District of Mount Barker Open Space, Recreation and Public Realm Strategy aims to guide the future provision, development and management of open space, recreation and the public realm across the District of Mount Barker. The Strategy Report provides principles and strategies for adoption and implementation and also highlights potential projects for each township in the District.

The Open Space, Recreation and Public Realm Strategy recommends the provision of a number of new sports grounds and significant parks in the District as well as enhancements to the public realm to maintain the unique character and destination and visitor value of townships and the District. The Strategy also highlights the need for improvements to existing open spaces and facilities to cater for existing and future populations. As a result, the Strategy identifies a large number of potential projects that will require a significant allocation of resources to achieve implementation. Council does not have the resources to achieve all potential projects and obtaining grant funding and establishing partnerships with the State Government, developers, the private sector and community groups will be essential to achieving the directions in the Open Space, Recreation and Public Realm Strategy.


It is important to understand that the Open Space, Recreation and Public Realm Strategy does not require every strategy and project to be achieved and it does not commit Council, the State Government or any other organisation or community group to commit funding. Instead the Strategy is provided as a guide with identified principles, strategies and potential projects that will assist Council and the State Government to make decisions regarding future projects as resources become available.

The timing of implementing specific strategies and projects will depend on the availability of funds, the population growth rate and subsequent community demands, and the opportunities that may arise through partnerships and agreements with developers, schools, the private sector and sport and community groups.

A partnership approach will be required to achieve quality recreation and sport facilities and meet the diverse needs of the community, including shared-use of school facilities and contributions towards facilities. This should include investigating the potential contribution of developers, commercial recreation facility operators and users of facility.

The Open Space, Recreation and Public Realm Strategy should be reviewed on an ongoing basis and specific strategies and projects could change in time in accordance with changing community needs, Council priorities and resource availability. A general review of strategies and priorities should be undertaken at least annually and a detailed analysis of the Open Space, Recreation and Public Realm Strategy would ideally be undertaken every 5 years.

The Open Space, Recreation and Public Realm Strategy should be used as a working document that is supported and added to by Council staff over time. This will ensure the Strategy is implemented as resources become available and the appropriate priorities are committed to over time to meet the needs of the community and ensure the District Council of Mount Barker is a quality place to live in the future.



Consider trigger points and thresholds for the provision of facilities in growth towns to determine project timing

Ensure recreation, sport and other needs are reflected in growth area masterplans

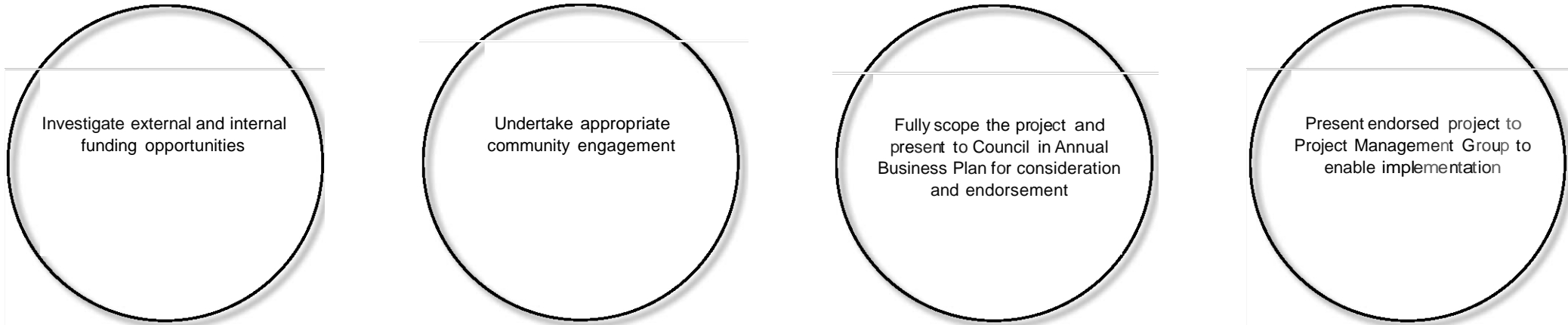
Develop concept plans for specific projects

Approach to Achieving Strategies and Projects

It is recommended that a Works Plan is developed as the first 'step' to achieving the Open Space, Recreation and Public Realm Strategy. A Works Plan would record and prioritise specific works, determine timing, responsibility and resource requirements, and enable actions and projects to be incorporated within Works Budgets.

Generally a Works Plan is a 5 year document that is closely connected to Works Budgets and can be used to prioritise projects and identify grant funding and partnership opportunities. The Potential Projects outlined in this Strategy would provide the initial basis of the Works Plan.

To contribute to achieving specific actions and projects in the Works Plan, the following 'steps' are suggested.



Investigate external and internal
funding opportunities

Undertake appropriate
community engagement

Fully scope the project and
present to Council in Annual
Business Plan for consideration
and endorsement

Present endorsed project to
Project Management Group to
enable implementation



Implementation Partnerships

As a Local Government Area with a relatively small population and a large geographical area Council will need to partner with the State Government, community groups, schools and the private sector to achieve the strategies and projects outlined in the Open Space, Recreation and Public Realm Strategy.

The District Council of Mount Barker will have an important role to play in identifying projects and priorities and guiding works, using the Open Space, Recreation and Public Realm Strategy as the basis. The Council will also need to play a key role in establishing partnerships to achieve the projects, priorities and works. This will involve promoting projects to potential partners, seeking grant funding and negotiating partnership arrangements.

The potential roles of other stakeholders are considered opposite.



State Government

- Contribute to and support ongoing planning for specific open space, public realm and facilities.
- Contribute to achieving various projects and initiatives through targeted grant funding.

Sport, Recreation and Other Community Groups

- Participate in planning for specific open space and facilities.
- Raise funds to contribute to achieving projects and initiatives.
- Contribute to maintaining and managing open spaces, natural areas, public realm and facilities.
- Adopt best practice principles when providing and managing open spaces and facilities (Ecologically Sustainable Development, CPTED, Healthy by Design, Disability access).

School, Education and Other Agencies

- Support community use of school and education ovals, fields and facilities.
- Contribute to the improvement of shared-use facilities (Council or education).
- Establish initiatives that support active and integrated communities.
- Adopt best practice principles when providing and managing open spaces and facilities (Ecologically Sustainable Development, CPTED, Healthy by Design, Disability access).

Private Sector

- Partner or sponsor Council or the community in the development and improvement of open spaces, facilities and public realm.
- Adopt best practice principles when developing urban areas, open spaces, public realm or facilities (Ecologically Sustainable Development, CPTED, Healthy by Design, Disability access).

Council Roles

Mount Barker District Council has defined potential roles for Council in its Community Plan. These roles are outlined below with an indication of how each role will relate to the implementation of the Open Space, Recreation and Public Realm Strategy. Potential specific Council roles are considered in the Potential Projects section.

Potential Role: Community Plan Description:

Leadership	Council analyses research and feedback from service providers and the community to integrate these directions in its decision making. Council demonstrates leadership through its own programs and services and in all aspects of its operations. Council monitors, reviews and reports on its performance in achieving the goals it establishes.
Owner/Custodian	Council contributes to the elements that support positive community outcomes through the way it provides, manages and maintains the built and natural assets, physical infrastructure and community facilities under its care and control.
Regulator	Council develops and implements planning and building controls that support timely provision of social infrastructure and community facilities in residential development and urban renewal projects.
Information Provider	Council provides information to support all members of the community to access the services and activities they need to promote health and well-being, enable life-long learning and active participation in community life.

Open Space, Recreation and Public Realm Relevance:

Commit to the strategies in the Open Space, Recreation and Public Realm Strategy.

Determine priority strategies and projects for implementation.

Ensure the appropriate provision, development and management of open space, recreation and the public realm in accordance with the Open Space, Recreation and Public Realm Strategy.

Regulate and guide urban development to manage impacts on open space, recreation and the public realm, e.g. influence building design to complement existing characteristics, maintain land buffers to differentiate townships. This will include adopting the guidelines provided in the Open Space, Recreation and Public Realm Strategy.

Provide information to the community regarding planning and project priorities and facilities and spaces such as open space

Potential Role:	Community Plan Description:	Open Space, Recreation and Public Realm Relevance:
Advocate	Council has an important role in setting the vision and communicating the priorities for the District. Council advocates on behalf of the community to relevant State and National Government Departments and Ministers, not for profit organisations and private service providers to increase the level of services available to meet the needs of its community and to improve their ability to access these services.	Protect natural areas and include land buffers, corridors and significant land parcels within the open space system where appropriate. Advocate for grant funding and State government support to achieve positive Open space, recreation and public realm outcomes.
Facilitator/ Initiator	Council facilitates or initiates the involvement of other parties in projects, plans or programs that contribute to positive outcomes for the community.	Plan for and guide the implementation of specific projects and initiatives outlined in the Open Space, Recreation and Public Realm Strategy.
Agent	Council provides a service on behalf of another party that funds the service, when the associated funding conditions accord with Council's own directions.	Seek opportunities to provide facilities and services on behalf of other agencies.
Partner	Council works in partnership with a service delivery agency, community or government organisation or private sector to jointly plan, fund and deliver a facility, service or program.	Work with sport and recreation groups, other community organisations, schools and the private sector to achieve strategies and projects in the Open Space, Recreation and Public Realm Strategy.
Direct Service Provider	Council provides services directly to members of the community to enhance their overall quality of life, in accordance with Council's adopted service levels, plans and strategic directions.	Continue to manage and maintain open space with support from the community and other partners.

