

PLAN NOTES:

1: OVERFLOW CARPARK

Existing open space regraded and planted with scattered indigenous trees for shade, site for future extension of farmer's market if required.

2: FOOTPATH

informal rubble

3: FOOTBRIDGE

small area of regraded banks for water detention

5: SCREEN PLANTING

as buffer to adjacent properties, rubble footpath

6: RIVERBANK

land back to allow for improved access to lower level

7: PICNIC AREA

rustic seats and tables from red gum logs

8: FORMAL CARPARK

New and existing carparks to be bitumen spray sealed, topped with fine brown screenings

9: NEW TOILETS

10: PICNIC AREA

new picnic settings with disability access

11: UNIVERSAL ACCESS PLAY AREA

major play installation including liberty swings, all on rubber safety fall, shade structures

12: NATURAL CREEK PLAY AREA

13: WOODLAND PLAY & PICNIC AREA

with bridge link over 'creek' and scattered 'natural' play elements and picnic tables

14: EXISTING BBQ AREA

BBQ and shelter retained, additional picnic tables

15: OPEN SPACE

16: ORNAMENTAL GARDEN

and new path from car park

17: STORMWATER DETENTION WETLAND

18: ORNAMENTAL GARDENS

with seats, arbours

LEGEND

● Picnic facilities

★ Play areas

● New deciduous tree

● New indigenous tree

PUBLIC ART WORKS

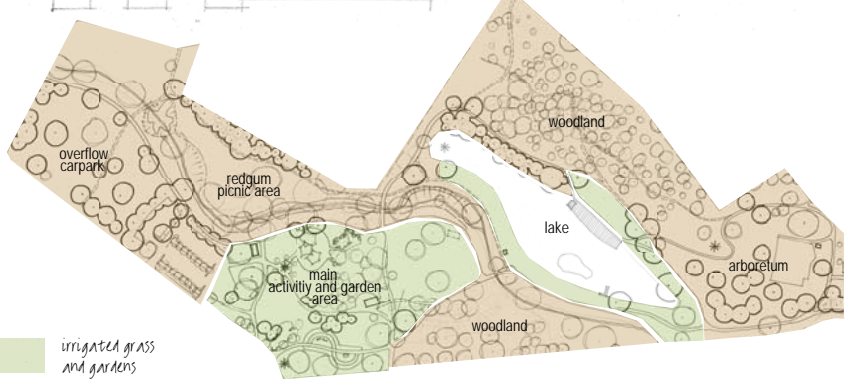
(for descriptions refer Public Art Policy, Plan L2)

(A1) Bridge over the creek

(A2) Bush Sculpture Park

★ Art works as focal points

IRRIGATION ZONES



irrigated grass and gardens  
dryland grass, shrubbers as required for trees etc.

PLAN NOTES:

19: ART PIECE

located to be visible from all approaches

20: KIOSK

existing toilets converted to a kiosk with terrace overlooking play areas, and ornamental garden, restricted access for delivery vehicles

21: RESTRICTED EMERGENCY AND DELIVERY ACCESS

22: FLOOD CONTROL MOUND & WOODLAND WALK

reconfigured between existing trees so that slopes are oriented towards internal open space and event area (No. 23); additional canopy tree planting with informal footpaths; new shelter near bridge

23: OPEN SPACE AND EVENT AREA

24: SITE FOR TEMPORARY STAGE & OTHER STRUCTURES

with provision of power for sound, lighting, catering etc

25: FOOTBRIDGE

to provide opportunities for circuit walks, access to lake, bush sculpture area

26: ART PIECE

water based sculptural piece, provides a focus and destination for walks around the lake

27: RIVERBANK

banks legally land back for improved safety and access to the creek

28: LAKE EDGE & PICNIC AREA

intermittent reed planting along lake edge, gravel path to create less formal picnic setting overlooking the lake

29: REGRADED BANKS

mound lowered to improve safety (flatter gradient) and visibility to lake, minimal planting to retain views to staged events on the far lake side

30: JETTY

located over the water overflow infrastructure

31: ISLAND

with low reed planting for wild life refuge

32: WATER FEATURE

for interest and improved water quality

33: GRASSY BANK

open area retained

34: JETTY, INTEGRATED SHELTER & LOOKOUT

space for events, seats, shelter sits over water, power for sound system, lights, catering etc

35: WOODLAND

trees such as swamp tea trees planted down to water's edge

36: ART PIECE & LOOKOUT

located to be visible from distant points and to provide a focus and destination

37: PLAYGROUND AND PICNIC AREA

small scale play elements, picnic shelter and table

38: SKATE PARK FACILITIES

sealed path extended to ramp, shelter and seats, drinking fountain

39: CINEMA EMERGENCY EXIT

realigned to exit into open public space

40: BIKE AND PEDESTRIAN PATH

earth fill to allow for through movement to crossing point and town centre

41: ARBORETUM

scattered deciduous trees with striking autumn foliage colours to form part of the Mount Barker autumn walk

42: PATH REALIGNMENT

path regraded and realigned over flood containment mound

0 5 10 15 20 25m



project: ADELAIDE ROAD & KEITH STEPHENSON PARK

drawing: KEITH STEPHENSON PARK MASTER PLAN

client: DC Mount Barker

job no.: HA08290

scale: 1:1000 at A1

drawing no.: L1

date: February 2010

dwgs in set: 1 of 6

issue: FINAL

amendments:

hilarly hamnett & associates  
30 little sturt st - adelaide - sa 5000  
t: 08 8211 6212 - m: 0408 897 445  
in association with Martin Corbin

A1  
sheet size