

11. REPORTS

**11.1 REPORT TITLE: SA POWER NETWORKS 66KV SUPPLY
ROUTE**

DATE OF MEETING: 17 MARCH 2014

FILE NUMBER: 48/030/112

Strategic Plan 2012-2017 Ref:

Urban Growth

2.4 Continue Mount Barker Master Planning to pursue integrated and managed urban growth outcomes.

Purpose:

To provide all relevant information for Council to finalise its views on the preferred Line Route Option and substation location for the transmission 66kV power to the growth areas.

Summary – Key Issues:

- Council's resolution in August 2013 to support Line Option 3 and the substation within the light industry zone was a preliminary position. Further consideration and finalisation of its preferred options is pending an examination of an alternative route (combined option 1 and 3), the receipt of public submissions from SAPN and observations undertaken during a field trip.
- The field trip was undertaken on Monday 3 February 2014. Members observed for themselves the features (vegetation, topography, growth area boundaries, future developed areas, alignment of the connector boulevard, existing development, new housing and industrial areas etc) that have a bearing on the final alignment of the 66kV line and the location of the substation.
- The field trip, public consultation, the views expressed by the Project Steering Group and the re-examination of the pro's and con's of the alternative options continue to support Council's preliminary views. Option 3, while imperfect, offers the best balance between many environment and visual opportunities and impediments when the available options (including an Option 1 and 3 combination) are considered in their proper context. No information has emerged in the interim to suggest that undergrounding is anything other than cost prohibitive and impractical.

Recommendation:

That Council:

1. Advise SAPN and the Chair of the Project Steering Group that it:
 - a. acknowledges the circumstances that underpin SAPN's decision to reject undergrounding supply on the grounds that, in respect of its entire length, it is cost prohibitive and for other reasons not feasible.
 - b. remains of the view that undergrounding the 66kV line for its full extent in the growth area is the preferred option for electricity supply.
 - c. endorses SAPN's intention to identify critical areas where undergrounding would be desirable or necessary.
 - d. confirms that it supports the recommendations of the Steering Group in respect of Line Route Option 3 as being the best available under the circumstances.
 - e. expects the identification of undergrounding opportunities and the finalisation of the route alignment in detail and the selection of a substation site to be the subject of consideration by the joint working group proposed by Council.
2. Endorse the communication strategy as outlined in Attachment 3.

Background:

1. Council deferred consideration of this item at the council meeting held on 17 February 2014.
2. A Project Steering Group (the Steering Group) was established to investigate the options for the location of the South Australian Power Networks (SAPN) 66kV electricity infrastructure within the growth area. The Steering Group is convened by the State Government.
3. Council has an interest in some land parcels that may be affected by the final decisions of SAPN. Brian Clancey, General Manager Infrastructure and Projects, is a member of the Steering Group.
4. The process for decision making was endorsed by Council on 6 May 2013. The processes were reproduced in Item 7.2 of the Strategic Planning and Development Policy Committee (SPDPC) (9 December 2013) and can be provided on request.
5. In August 2013 Council considered the pro's and con's of four line route options and two substation options that were depicted in the Project Information Sheets prepared by SAPN for the purpose of community consultation.
6. Attachment 1 depicts the options that were put forward by SAPN for consideration and includes the route taken on the field trip.

7. The Council resolved in August 2013 (subject to more detailed investigations being undertaken and the finalisation of the consultation process) as follows:
 - a. *The most appropriate route for the 66kV transmission line is "Line Option 3"*
 - b. *The most appropriate site for the new substation is within the Light Industry Zone adjacent Wellington Road.*
8. The resolution was reached after Council had regard to (and ultimately adopted) the following guiding principles:
 - Minimize visual and amenity impact
 - Minimize loss of and impact on native vegetation
 - Follow existing SAPN easements where possible
 - Utilise buffer areas where possible
 - Utilise Light Industrial/Employment Zone (southern Growth area)

It also had regard to the provisions of the Development Plan which speaks to the high visual and environmental conditions that are required for the connector road and activity centres.
9. Council at that time indicated that "its objective is for undergrounding the 66kV line and will seek to revisit this during the course of the consultation process". To assist its consideration, it requested SAPN to produce the detailed basis of its cost estimates for undergrounding the supply and indicated an intention to have the estimates independently verified.
10. The position of the Council in the period leading to October 2013 was preliminary. Further consideration of the options rendered its final decision subject to the receipt of the (post consultation) recommendations of the Steering Group and the outcome of the independent assessment of the underground cost estimate. The results of the public consultation were presented to Council at an informal briefing of Members on 8 October 2013.
11. In December 2013, the SPDP Committee in its capacity as a planning advisory body, considered a detailed report which assessed the route and substation options. The report included a summary of the public's submissions, the assessment undertaken by Sinclair Knight Merz of the undergrounding cost estimate and the recommendations of the Steering Group. The Steering Group report was in Item 7.2 of the SPDPC (9 December 2013) and can be provided on request.
12. On 16 December 2013, Council resolved to establish a joint (officer level) project working group to progress and finalise route/substation options and defer finalisation of its recommendations until a field trip had been undertaken. It also sought that public submissions be made available. The response received from SAPN has been conveyed to Members on 30 January 2014 as an attachment to the Information Memo concerning the field trip.

13. The response also advises of the problems to the works program that would be created should further significant delays occur, agrees to consult with the working group, reinforces the fact that the final decision on the route and substation location rests with it and declined to make the submissions available to Council other than on a very restricted basis.

Discussion:

Field Trip

14. The field trip was conducted on Monday 3 February 2014. It was attended by five Members, senior staff and Mr Grant Rice (SAPN) and Mr Daniel Thorpe (Gould Thorpe).
15. All route options are within private land, the majority of it being used for rural purposes distributed across many, perhaps hundreds of, individual parcels. In some cases, route options are directed over elevated landscapes which for practical purposes are inaccessible. Because of such access and other practical difficulties, all observations were made from strategic points along public roads.
16. The discussion was interactive and generally covered the multiple factors that have a bearing on the optimum route, the decision of SAPN to reject the option to underground the supply for its full length and the impact that the route would have on the future landscape and public realm should it proceed along the connector road.
17. SAPN outlined the timelines for construction which, in certain circumstances, may not occur for 20 years or more. Also identified were the existing overhead 11kV power supply in the eastern sector (Paech Road and Hartman Road) that will be removed once development proceeds.

Undergrounding the supply

18. In November 2013 SAPN provided cost estimates for undergrounding the supply in response to Council's resolution. SAPN also provided information about undergrounding that was not available at the time Council first considered the issue. Specifically identified were the non-financial impediments and technical issues related to undergrounding in terms consistent with SAPN's presentation to Council in its informal briefing on 8 October.
19. The impediments of particular note are summarised in the following excerpt from SAPN's response:

The underground option required the future connector road to be completed or near completion prior to the cable's installation. As

this road is not likely to be completed in a single stage, but in sections, with the possibility of it not connecting in the time frames required, it is not practically feasible to install the cable without facing greater engineering issues.

20. As was observed in the abovementioned report to the SPDPC, as desirable as undergrounding the supply for its entire length might be the fact remains that its feasibility is dependent upon the completion of the connector road. The problematic sequencing and timing of development and the complexities arising from highly fragmented landholdings makes it impractical if not impossible to commit to this form of supply at this early stage of growth. This is a reality that was emphasised during the field trip.
21. Nevertheless, in accordance with Council's resolution, the Power and Energy division of SKM was engaged to undertake an independent assessment of the cost estimates.
22. In short it estimates a cost for Stage 1 of \$34.633m. This is to be compared with the estimate of SAPN of \$39.306m. A summary of the cost estimates were reproduced in Item 7.2 of the Strategic Planning SPDPC (9 December 2013) and can be provided on request.
23. SKM formed the view "that the SA Power Networks cost estimate is reasonable with the estimate variance being around 12%". The analysis undertaken by SKM indicates that undergrounding is cost prohibitive and serves to reinforce the view expressed above to the effect that undergrounding the 66kV supply, while highly desirable, is impractical.

Line Route and Substation options

24. The "Final Report of the Mt Barker Infrastructure Steering Group" (the Final Report) was reproduced in Item 7.2 of the SPDPC (9 December 2013) and can be provided on request. Its findings in respect of the community engagement process and engagement findings are consistent with the presentation made informally to Council by SAPN.
25. Of some significance is the extent of the community engagement process and the level of response. SAPN implemented a comprehensive consultation process involving direct contact with landowners within and adjacent the growth area, public notices, an information article in the Mt Barker Courier and two general community and two developer/owner information sessions.
26. Written submissions were invited. In all 41 submissions were received (34 from community members, 3 from community groups and 4 from developers). SAPN's description of the response as "moderate" is appropriate in the circumstances.

27. The details contained in sections 4 and 5 of the Final Report are relevant to the Council's stated intention to review its preliminary position on the options after considering the outcome of community consultation. Also of some assistance to Council's consideration is the assessment of the community feedback undertaken by SAPN.
28. The analysis undertaken by SAPN (a process underpinned by the predetermined selection criteria) was the basis for the Steering Group making a recommendation in favour of Line Option 3 as the optimum location for the 66kV line. This recommendation is consistent with Council's preliminary view.
29. The work of the Steering Group has also revealed that Line Option 3 provides considerable flexibility in the location of the substation. It could be serviced by a centrally located facility or one in the light industry zone. The optimum location would depend on many factors including the mix of surrounding land uses and the siting and design of the substation.
30. The Steering Group's recommendation recognises the need for further discussion between SAPN and Council to finalise the location of the substation and the potential for SAPN to negotiate minor deviations from the nominal route of Line Option 3.
31. Significantly, SAPN has indicated, through the Steering Group, that "short lengths of undergrounding may still be considered for short critical areas..."
32. SAPN regards the responses to its consultation process to be confidential. For the reasons outlined in its confidential communication to Members (distributed) it is not prepared to release the details in the manner sought by Council. Instead it is willing to permit an authorised officer of the Council to view all submissions under supervision.
33. In accordance with Council's December 2013 resolution the use of the connector road (Option 1) was the subject of discussion during the field trip. As the field trip demonstrated there is little doubt that whatever route is chosen there will be visual consequences either during construction (the loss of some vegetation) and, as importantly, the future amenity of the public realm. It is, in the end, a question of achieving the correct balance.
34. As mentioned on the field trip the application of the tree clearance and building setback requirements to the connector road corridor of the Office of the Technical Regulator would be in direct conflict with the dictates of the Development Plan which calls for the connector road being developed as a high visual amenity tree lined boulevard. These requirements were circulated to all members in the information package provided to all members. They can be made available on request.

35. In addition to the removal of trees, the visual impact of a 66kV power supply in Option 1 would be exacerbated by the Council being prevented from planting vegetation of any significance within the corridor and the visual impact caused by the increased density of stobie poles that would be a direct consequence of the road geometry. The visual consequences would be unacceptable and would fall on the many hundreds of residents that would be adjacent the corridor and the many thousands of motorists who utilise it to move through the localities.
36. The potential for the connector road (Option 1) to be considered as part of the preferred route has arisen from comments made during public consultation. As helpful and necessary as public consultation is, in these circumstances, Council should also consider, if not give some primacy to, a power supply route and substation location that will create optimum "place-making" opportunities for the *future community*. These reasons together tip the balance away from Option 1.
37. Subsequent to the Council consultation process undertaken by SAPN, three further submissions have been received. The submissions and SAPN's response are contained in Attachment 2.
38. Neither the consultation process, the considerations of the Steering Group nor the observations made during the field trip bring into question the relevance of the above guiding principles adopted by Council to assist its decision. Option 3, while imperfect, offers the best balance when the available options are considered in their proper context. As was stated by Mr Rice during the field trip and on previous occasions the preferred corridor is generally depicted and will be subject to fine tuning with the retention of vegetation high in the list of final alignment criteria.
39. The location of the substation also requires further consideration. Its construction timetable is likely to vary considerably depending on the final line route designation and load growth (6-7 years). This factor together with the flexibility that Line Option 3 offers for the substation location enables the joint working group to properly evaluate the site options and Council to pursue its environmental objectives.

Community Engagement:

Informing only	Refer attachment 3
----------------	--------------------

Policy:

Nil.

Budget:

Cost of SKM Consultancy Services \$6,955.30.

Statutory/Legal:

Nil.

Staff Resource Requirements:

Council's response to urban growth continues to impact on staff resources. The proposed working party recommended herein will involve further staff commitments but over a period of time and within existing resource capacity.

Environmental:

The visual and environmental impact of the preferred route have been extensively canvassed in previous reports and presentations.

Social:

Nil.

Risk Assessment:

Council has previously established guidelines upon which its preliminary and final recommendations are founded. Nothing in the intervening period brings the relevance of the guidelines into question. They appropriately balance the several competing interests and risks.

Asset Management:

Nil.

Conclusion:

The assessment of the preferred line route by the Steering Group, the substantiation by SKM that the cost of undergrounding is cost prohibitive and the non-financial impediments identified by SAPN all support the Council's preliminary position to endorse Line Route Option 3.

The establishment of the (officer level) joint Council/SAPN working group (as resolved by Council in December 2013) to fine tune the route design and alignment and a preferred substation location is consistent with the Council's objective of minimising environmental impact.

Key Contact

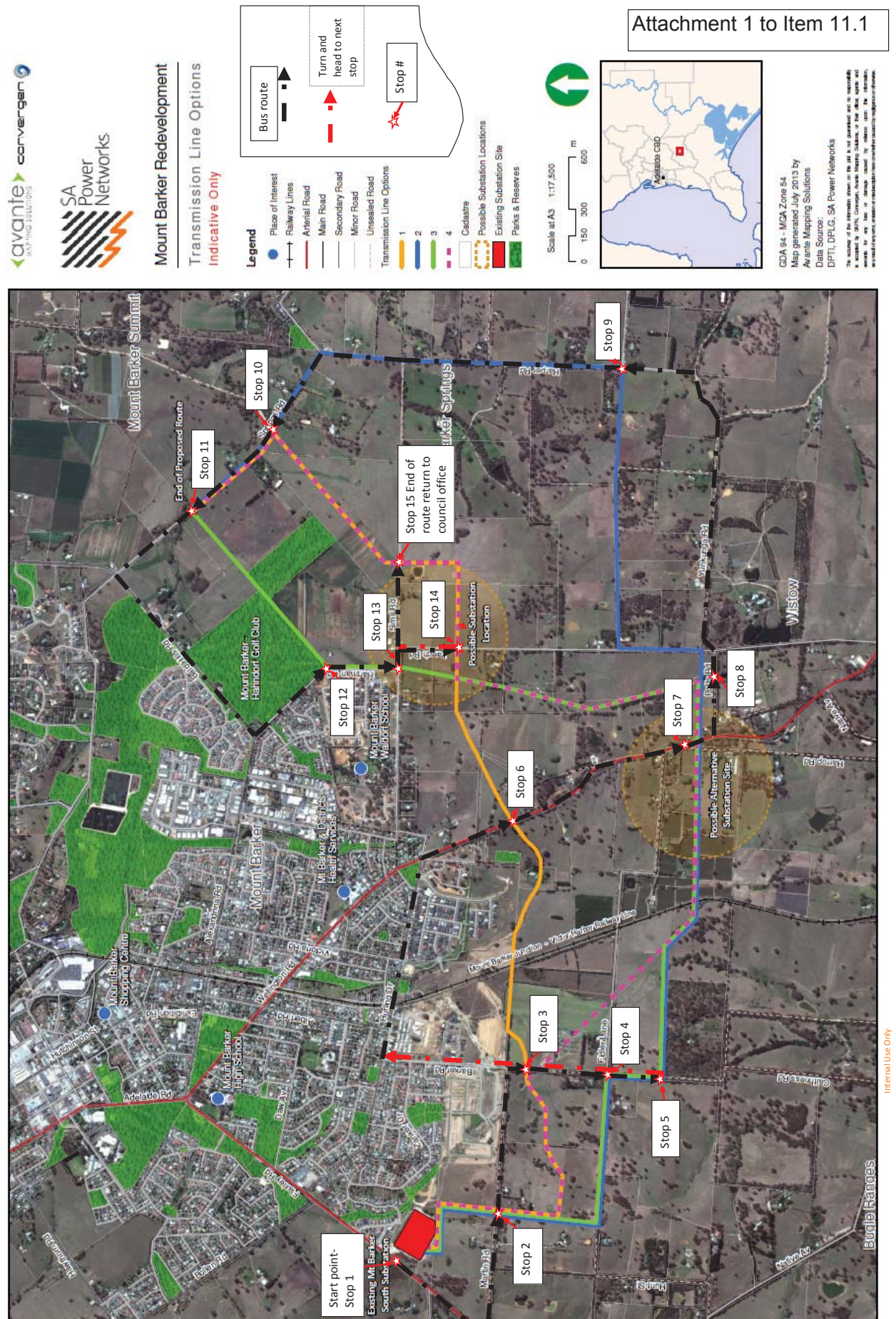
Terry Mosel, Senior Planning Consultant

Manager or Sponsor of Project

Brian Clancey, General Manager Infrastructure and Projects

Attachments

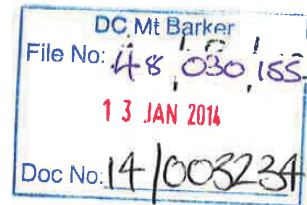
1. SAPN Transmission Line Options Plan and Field Trip Map 14/009509
2. Correspondence and Replies – Kavanagh, Briscoe, Selby 14/009136
3. Communications Strategy 14/009486



Attachment 2 to Item 11.1

10th January 2014

District Council of Mount Barker
Infrastructure and Projects General Manager
Mr B Clancy
PO Box 54
Mount Barker SA 5251



SCANNED
13 JAN 2014

Dear Mr Clancy

We are not in favour of line options 1, 2 and 4 for the power supply route which will go through our property at 191 Paech Road, Mount Barker, Lot 30 FP 160107 CT 5776/473.

Option Line 2 is the most logical route as it mainly follows existing roads and will not affect the four land owners on Paech Road.

Underground Power lines are the best option because they are aesthetically pleasing and most practical.

Yours sincerely

A handwritten signature in cursive script, appearing to read 'D. J. Briscoe' followed by 'G. A. Briscoe'.

Dudley and Gillian Briscoe
PO Box 123
Mount Barker SA 5251



CARE: 53435

31 January 2014

Dudley and Gillian Briscoe
PO Box 123
Mount Barker SA 5251

Dear Dudley and Gillian

Proposed Mt Barker East Substation and Associated 66kV Lines

I am writing in response to your letter dated 10th January regarding the proposed Mt Barker East substation and associated 66kV overhead power lines.

In addition, I would also like to address your letter sent to Mt Barker District Council, which outlined your opposition to line options 1, 2 and 4. In contrast, your direct letter to us referred to your opposition to line options 1, 3 and 4.

During our telephone conversation on Thursday 30th January we clarified that you oppose options 1, 3 and 4, as option 2 does not cross your land. While your response was received after the public consultation period had concluded, and was therefore not included in the consultation report, we have still noted your position.

The decision making process for the overhead line option is still underway and we are waiting for formal advice from Council on their preferred option. We are meeting with Council members on Monday 3 February to discuss the options so they can make a decision at their Council meeting on 17 February.

Please be assured we are listening and understand your opposition to the proposal that has been submitted to Council following the public consultation and notification of the preferred option. We have received similar complaints from three other landowners, one being your neighbour, who have made comment since the recommendation from the project Steering Committee was made public. All of the possible options will involve landowners and there are many stakeholders in the process. We are therefore trying to make a decision that is in the best interest of the broader Mt Barker community. At this stage, we have made a recommendation of our preferred option and no final decision has been made yet.

In addition, the likelihood of a line section being located close to your property also depends on the final substation location, which has not been concluded yet. If option 3 or 4 is chosen, the line

SA Power Networks ABN 13 332 330 749 a partnership of: Spark Infrastructure SA (No.1) Pty Ltd ABN 54 091 142 380, Spark Infrastructure SA (No.2) Pty Ltd ABN 19 091 143 038, Spark Infrastructure SA (No.3) Pty Ltd ABN 50 091 142 362, each incorporated in Australia, CKI Utilities Development Limited ABN 65 090 718 880, PAI Utilities Development Limited ABN 82 090 718 951, each incorporated in The Bahamas.

www.sapowernetworks.com.au

section may not be constructed for 6 to 7 years for a central substation location, or 20 to 30 years if an industrial zone location is selected.

Once a decision is made we will then start direct negotiations with affected landowners to finalise the exact line route and minimise local impacts. If option 3 or 4 is chosen, then we will meet with you to discuss in more detail.

The final consultation report from the public consultation can be viewed on our website at:
http://www.sapowernetworks.com.au/centric/industry/our_network/major_projects/mount_barker_east.jsp

This site has other information relevant to project and has been recently updated to reflect the current status after the initial consultation.

I hope this assists and provides you with additional information to assist in understanding the recommendations made.

If you have additional issues or concerns or would like to speak to the project team, please contact our Customer Relations team on telephone 13 12 61 or by email at customerrelations@sapowernetworks.com.au and quote Care: 53435.

Yours sincerely



Grant Rice
Strategic Project Manager

Copy: District Council of Mt Barker



www.sapowernetworks.com.au

Please see my note below to SA Power Networks regarding the proposed High voltage power towers along Hartman Rd

Is there any appeal against the decision or someone you suggest we talk to? I would be surprised if others in my area are aware of the proposal

Thanks for your help and I look forward to your response!

Keith Selby

From: Keith & Leanne Selby [mailto:kandlsselby@bigpond.com]
Sent: Sunday, 5 January 2014 6:42 PM
To: 'customerrelations@sapowernetworks.com.au'
Subject: re Power supply Mt Barker Township Development Area

Dear Grant

Today I received your letter regarding future development for the Mt Barker Area dated 16 December 2013

On consideration of the plan I feel the only proposal suggested that is fair to existing residential is option 2 (Blue) as it bypasses the existing dwellings

I have just completed building a home at Lot 100 Galloway Ct Mt Barker; this block adjoins Hartman Rd. One of the key reasons for selecting this land was its excellent Views of Mt Barker

If your option 1 or 3 were to be used it would result in devaluation of our property by around \$200,000 and we would have to move because of the risk associated with living near high voltage power lines

Grant, I know this for a fact because my family also owns a house in Creekside Close Mt Barker next to your appalling looking power facility there.

I will not hesitate to commence community legal action should it be needed.

Yours faithfully

Keith Selby

19 Galloway Ct
Mt Barker SA 5251

This email has been scanned by the Symantec Email Security.cloud service.
For more information please visit <http://www.symanteccloud.com>



CARE: 53395

31 January 2014

Keith & Leanne Selby
PO Box 123
Mount Barker SA 5251

Dear Keith & Leanne

Proposed Mt Barker East Substation and Associated 66kV Lines

I am writing in response to your email dated 5th January regarding the proposed Mt Barker East substation and associated 66kV overhead power lines.

I note you also contacted the District Council of Mt Barker regarding this issue. While your response was received after the public consultation period had concluded, and was therefore not included in the consultation report, we have still noted your position.

The decision making process for the overhead line option is still underway and we are waiting for formal advice from Council on their preferred option. We are meeting with Council members on Monday 3 February to discuss the options so they can make a decision at their Council meeting on 17 February.

Please be assured we are listening and understand your opposition to the proposal that has been submitted to Council following the public consultation and notification of the preferred option. We have received similar complaints from three other landowners, one being your neighbour, who have made comment since the recommendation from the project Steering Committee was made public. All of the possible options will involve landowners and there are many stakeholders in the process. We are therefore trying to make a decision that is in the best interest of the broader Mt Barker community. At this stage, we have made a recommendation of our preferred option and no final decision has been made yet.

Once a decision is made we will then start direct negotiations with affected landowners to finalise the exact line route and minimise local impacts. If option 3 is chosen, then we will meet with you to discuss in more detail.

SA Power Networks ABN 13 332 330 749 a partnership of: Spark Infrastructure SA (No.1) Pty Ltd ABN 54 091 142 380, Spark Infrastructure SA (No.2) Pty Ltd ABN 19 091 143 038, Spark Infrastructure SA (No.3) Pty Ltd ABN 50 091 142 362, each incorporated in Australia. CKI Utilities Development Limited ABN 65 090 718 880, PAI Utilities Development Limited ABN 82 090 718 951, each incorporated in The Bahamas.

www.sapowernetworks.com.au

The final consultation report from the public consultation can be viewed on our website at:

http://www.sapowernetworks.com.au/centric/industry/our_network/major_projects/mount_barker_east.jsp

This site has other information relevant to project and has been recently updated to reflect the current status after the initial consultation.

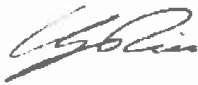
Further, in your email you mention the development near Creekside Close. This is located near an ElectraNet 275/132/kV line and the new Mt Barker South substation. Please note, these are not SA Power Networks owned assets and are not what is proposed along Hartman Road opposite your house. The proposal for Hartman Road is for Stobie poles not towers – similar to the 66kV Stobie poles that have been constructed on the western side of Flaxley Road in Mt Barker. The proposed substation is also significantly smaller and lower.

The line section that could be located near your property is not estimated to be constructed for 20 to 30 years, and so there is potential for change in the construction methods that may minimise your concerns. In that time, the district views you mention will also substantially changed following the construction of new houses, a school and a shopping precinct before the power line is likely to be built.

As outlined above, the final decision on the location of the new power line and substation has not been made and we will contact landowners once a clear decision has been made.

If you have additional issues or concerns or would like to speak to the project team, please contact our Customer Relations team on telephone 13 12 61 or by email at customerrelations@sapowernetworks.com.au and quote Care: 53395.

Yours sincerely



Grant Rice
Strategic Project Manager

Copy: District Council of Mt Barker



www.sapowernetworks.com.au

Sent: Monday, 9 December 2013 9:55 AM
To: Brian Clancey
Subject: RE: Council meeting on 16 Dec

Brian,

Following further discussions to your email below, and given the timeframes available to us we will not be in a position to be able to submit and attend the Council meeting as suggested. However, I would ask that this email is forwarded to the appropriate personnel within the Council so that it can be officially recorded that **we as the land owners object to the option being recommended.**

Given the short period of time available we have not been able to obtain all of the advice necessary but it should be noted that we will be pursuing every option available to us and vigorously object to this option. It should also be noted that I understand that there is likely to be 4 landowner affected by this option and in my initial early discussions it is my clear understanding that at least 1 other owner is of the same opinion and given that this is the case, the likelihood of this option gaining sufficient agreement to become reality is unlikely and I would wonder why a recommendation would be considered, let alone made with this knowledge. The Council members that are being expected to endorse the recommendations of the committee should clearly be made aware of this as it is likely to become a hollow recommendation and will have significant implications.

If you are unable to pass this to the appropriate personnel, can you please provide me with the appropriate details so that I can forward it on and have official recognition that it has been registered.

Regards

David and Sheila Kavanagh
Tel/fax 08 8391 2994
Mobile 0416 123 135

The information contained in this email may be privileged and confidential information intended only for the use of the individuals and or entities named above. If you are not the intended recipient, any use, disclosure or reproduction of this is unauthorised.



CARE: 53336

31 January 2014

David & Sheila Kavanagh
PO Box 288
Mount Barker SA 5251

Dear David and Sheila

Proposed Mt Barker East Substation and Associated 66kV Lines

I am writing in response to your email dated 28th January regarding the proposed Mt Barker East substation and associated 66kV overhead power lines.

I have been working closely with officers from the District Council of Mt Barker on the resolutions from the Council meeting on 20 December 2013, at which you had tabled your written concerns. While discussions with Council are still underway, I can provide an update on the current status of the project.

The decision making process for the overhead line option is still in progress and we are waiting for formal advice from Council on their preferred option. We are meeting with Council members on Monday 3 February to discuss the options so they can make a decision at their Council meeting on 17 February.

Please be assured we are listening and understand your opposition to the proposal that has been submitted to Council following the public consultation and notification of the preferred option. We have received similar complaints from three other landowners, one being your neighbour, who have made comment since the recommendation from the project Steering Committee was made public. All of the possible options will involve landowners and there are many stakeholders in the process. We are therefore trying to make a decision that is in the best interest of the broader Mt Barker community. At this stage, we have made a recommendation of our preferred option and no final decision has been made yet.

In addition, the likelihood of a line section being located close to your property also depends on the final substation location, which has not been concluded yet. If option 3 or 4 is chosen, the line section may not be constructed for 6 to 7 years for a central substation location, or 20 to 30 years if an industrial zone location is selected.

Once a decision is made we will then start direct negotiations with affected landowners to finalise the exact line route and minimise local impacts. If option 3 or 4 is chosen, then we will meet with you to discuss in more detail.

SA Power Networks ABN 13 332 330 749 a partnership of: Spark Infrastructure SA (No.1) Pty Ltd ABN 54 091 142 380, Spark Infrastructure SA (No.2) Pty Ltd ABN 19 091 143 038, Spark Infrastructure SA (No.3) Pty Ltd ABN 50 091 142 362, each incorporated in Australia, CKI Utilities Development Limited ABN 65 090 718 880, PAI Utilities Development Limited ABN 82 090 718 951, each incorporated in The Bahamas.

www.sapowernetworks.com.au

The final consultation report from the public consultation can be viewed on our website at:

http://www.sapowernetworks.com.au/centric/industry/our_network/major_projects/mount_barker_east.jsp

This site has other information relevant to project and has been recently updated to reflect the current status after the initial consultation.

I hope this assists and provides you with additional information to assist in understanding the recommendations made.

If you have additional issues or concerns or would like to speak to the project team, please contact our Customer Relations team on telephone 13 12 61 or by email at customerrelations@sapowernetworks.com.au and quote Care: 53336.

Yours sincerely



Grant Rice
Strategic Project Manager

Copy: District Council of Mt Barker



www.sapowernetworks.com.au

Attachment 3 to Item 11.1

SA Power Networks 66kV Powerline Route Options**Council's Communications Strategy**

Council will undertake to communicate the decision and rationale for supporting Line Route Option 3 as being the best available under the circumstances.

The principal avenues for communication to be Council's website and a letter to all landowners within the area rezoned via the Ministerial DPA, developers and those who lodged submissions with Council after finalisation of SAPN's public consultation process.

The communication is to include the following:

- The guiding principles established by the Council at the outset of its considerations
- The establishment of, Council's participation in, and the decision making process agreed by the Project Steering Group
- The general process undertaken by which Council reached its decision including
 - The independent assessment of SAPN's costs estimates or undergrounding
 - SAPN's summary and analysis of the public consultation process
 - The report and recommendations of the Project Steering Group
 - The detailed report considered by the SPDPC (acting as Council's planning advisory body)
 - The observations made on the field trip (including consideration of Option 1)
- The purpose and intent of Council's proposal to establish a joint Council/SAPN working group
- Reaffirm that the final decision on the route and substation location rests with SAPN