

Legend

Traffic Controller

Work Area

Altus Cones



Site Contact: Benjamin Smith  
Phone No: 0447 830 909  
Works commence: TBA  
Completed by: TBA  
Onsite: TBA

Traffic Controllers will be onsite to assist motorists and pedestrians when required.  
  
Pedestrian signage will be used whenever the worksite extends to footpaths

01	KK	DC	16/02/2023	Change to stop slow
ISSUE	DESG	APPD	DATE	AMMENDMENT DESCRIPTION

CLIENT:  
Downer Group

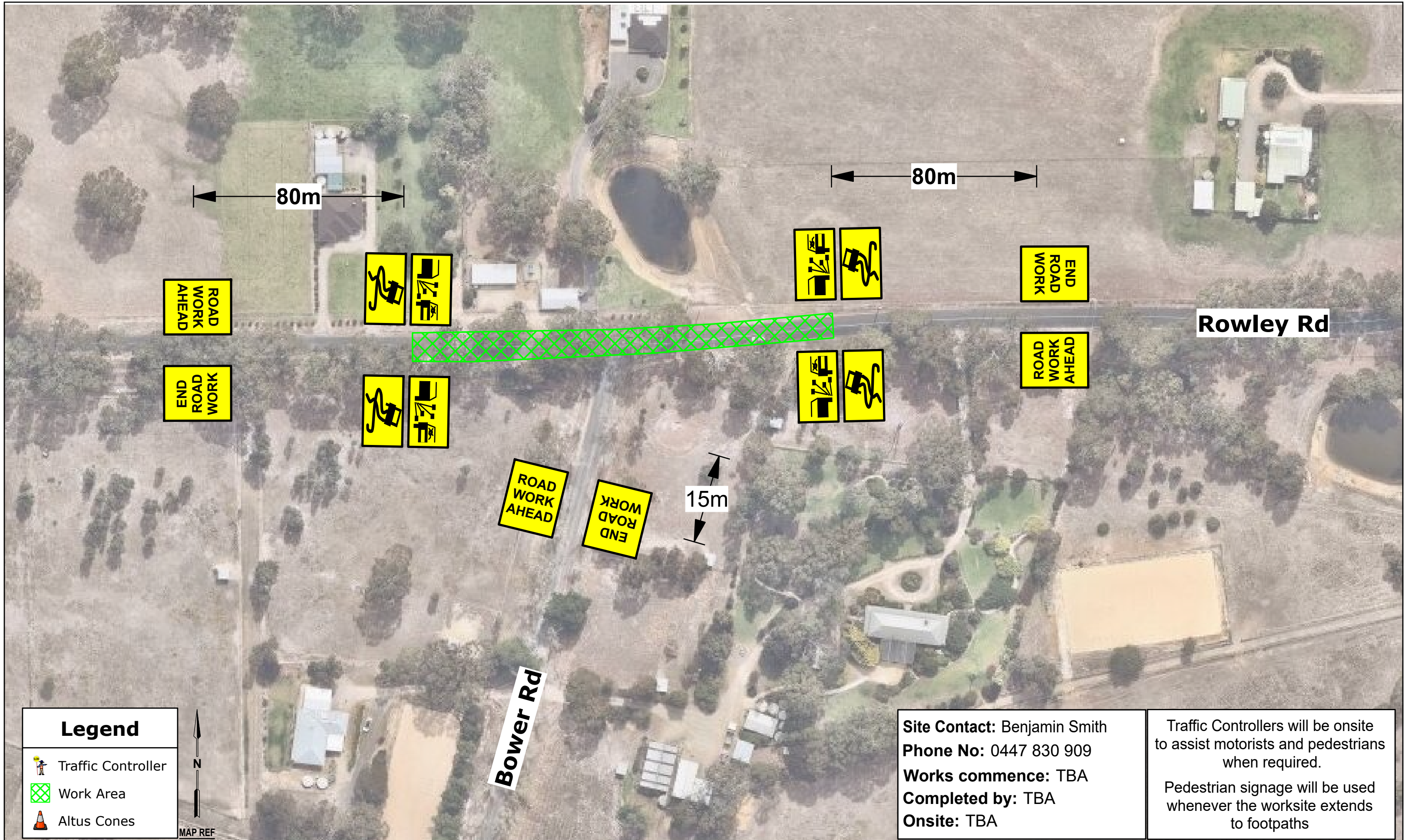
Relationships creating success

NOTES:  
- THIS TRAFFIC GUIDANCE SCHEME WAS DEVELOPED BY COMPETENT AND EXPERIENCED PERSONS AND IN ACCORDANCE WITH THE REQUIREMENTS OUTLINED IN "SA STANDARDS FOR WORKZONE TRAFFIC MANAGEMENT", AS THIS STANDARD THEN REFERS TO AS1742.3. BEFORE THE COMMENCEMENT OF ROUTINE SERVICES OR ANY ORDERED WORKS, ALTUS WILL CARRY OUT A RISK ASSESSMENT AND DEVELOP CONTROLS, MEASURES AND PLANS TO IDENTIFY, ELIMINATE OR MITIGATE ANY HAZARDS.  
- THIS PLAN WAS DEVELOPED TO ALLOW FOR THE SAFE MOVEMENT OF VEHICULAR AND PEDESTRIAN TRAFFIC AROUND THE WORKSITE, THE PROTECTION OF WORKERS FROM PASSING TRAFFIC, THE PROVISION FOR ACCESS TO PROPERTIES LOCATED WITHIN THE LIMITS OF THE WORKSITE, THE IMPLEMENTATION, MAINTENANCE AND REMOVAL OF ANY NECESSARY TEMPORARY ROADWAYS AND DETOURS, THE PROVISION OF TRAFFIC CONTROLLERS, THE INSTALLATION OF TEMPORARY SIGNS, TEMPORARY ROAD DELINEATION, AND ANY OTHER SAFETY MEASURES OR CONTROLS SUCH AS SAFETY BARRIERS WHEN REQUIRED.  
- ALTUS TRAFFIC DOES NOT ACCEPT RESPONSIBILITY FOR COMPLIANCE OF THIS PLAN WHEN IMPLEMENTED OR MONITORED BY EXTERNAL PARTIES.  
- THIS PLAN IS NOT TO SCALE AND IS A REPRESENTATION ONLY AFTER A JOB SAFETY ANALYSIS IS COMPLETED ON SITE. CHANGES MAY BE MADE BY ACCREDITED PERSONS. ALL AMENDMENTS WILL BE OUTLINED AND RECORDED IN A WORKSITE DIARY / SWMS FORM.

SCALE: NOT TO SCALE	PROJECT: Rowley Road Rowley Rd, Meadows SA Mount Barker
DESIGNED: Kos Kosgallana	DATE: 16/02/2023
APPROVED: David Croft	TITLE: Traffic Guidance Scheme Road Works Road Closed Speed Restriction
DRAWING NUMBER: 1042664-S02-P03-V01	
SHEET NO: 3/4	ISSUE: 01

STATUS: FINAL CONCEPT
ALTUS TRAFFIC Safely Managing Risk
Call Altus Traffic Toll Free (Australia) 1300 TRAFFIC (872 334) ABN 84 102 768 061
SCI QUAL SCI QUAL SCI QUAL INTERNATIONAL INTERNATIONAL INTERNATIONAL



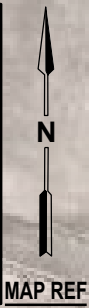


**Legend**

Traffic Controller

Work Area

Altus Cones



**Site Contact:** Benjamin Smith  
**Phone No:** 0447 830 909  
**Works commence:** TBA  
**Completed by:** TBA  
**Onsite:** TBA

Traffic Controllers will be onsite to assist motorists and pedestrians when required.

Pedestrian signage will be used whenever the worksite extends to footpaths

ISSUE	DESIGN	APPD	DATE	AMMENDMENT DESCRIPTION
01	KK	DC	16/02/2023	Change to stop slow

CLIENT:

Downer Group

Relationships creating success

NOTES:

- THIS TRAFFIC GUIDANCE SCHEME WAS DEVELOPED BY COMPETENT AND EXPERIENCED PERSONS AND IN ACCORDANCE WITH THE REQUIREMENTS OUTLINED IN "SA STANDARDS FOR WORKZONE TRAFFIC MANAGEMENT", AS THIS STANDARD THEN REFERS TO AS1742.3. BEFORE THE COMMENCEMENT OF ROUTINE SERVICES OR ANY ORDERED WORKS, ALTUS WILL CARRY OUT A RISK ASSESSMENT AND DEVELOP CONTROLS, MEASURES AND PLANS TO IDENTIFY, ELIMINATE OR MITIGATE ANY HAZARDS.
- THIS PLAN WAS DEVELOPED TO ALLOW FOR THE SAFE MOVEMENT OF VEHICULAR AND PEDESTRIAN TRAFFIC AROUND THE WORKSITE, THE PROTECTION OF WORKERS FROM PASSING TRAFFIC, THE PROVISION FOR ACCESS TO PROPERTIES LOCATED WITHIN THE LIMITS OF THE WORKSITE, THE IMPLEMENTATION, MAINTENANCE AND REMOVAL OF ANY NECESSARY TEMPORARY ROADWAYS AND DETOURS, THE PROVISION OF TRAFFIC CONTROLLERS, THE INSTALLATION OF TEMPORARY SIGNS, TEMPORARY ROAD DELINEATION, AND ANY OTHER SAFETY MEASURES OR CONTROLS SUCH AS SAFETY BARRIERS WHEN REQUIRED.
- ALTUS TRAFFIC DOES NOT ACCEPT RESPONSIBILITY FOR COMPLIANCE OF THIS PLAN WHEN IMPLEMENTED OR MONITORED BY EXTERNAL PARTIES.
- THIS PLAN IS NOT TO SCALE AND IS A REPRESENTATION ONLY AFTER A JOB SAFETY ANALYSIS IS COMPLETED ON SITE CHANGES MAY BE MADE BY ACCREDITED PERSONS. ALL AMENDMENTS WILL BE OUTLINED AND RECORDED IN A WORKSITE DIARY / SWMS FORM.

SCALE:	NOT TO SCALE
DESIGNED:	Kos Kosgallana
DATE:	16/02/2023
APPROVED:	David Croft
DRAWING NUMBER:	1042664-S02-P04-V01
SHEET NO:	4/4
ISSUE:	01

PROJECT:

Rowley Road  
Rowley Rd, Meadows SA  
Mount Barker

TITLE:

Traffic Guidance Scheme  
Road Works  
Aftercare Plan  
Speed Restriction

STATUS:

FINAL  
CONCEPT

ALTUS TRAFFIC  
Safely Managing Risk

Call Altus Traffic  
Toll Free (Australia)  
1300 TRAFFIC (872 334)  
ABN 84 102 768 061

SCI QUAL SCI QUAL SCI QUAL  
INTERNATIONAL INTERNATIONAL INTERNATIONAL