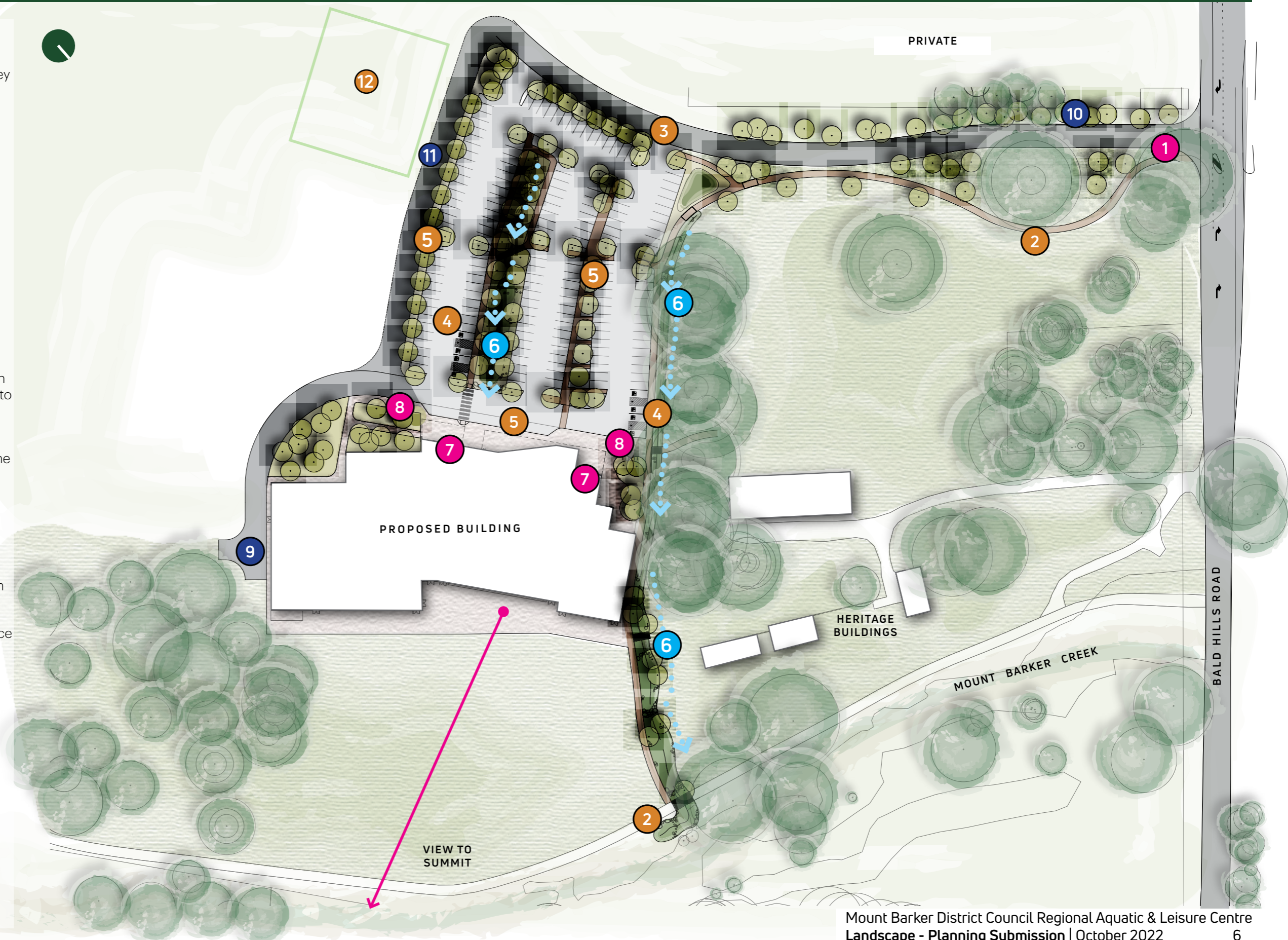


- 1 Meandering entry drive with intersection upgrade at Bald Hills Road. Celebrate existing red gums with uplighting and native understorey plantings
- 2 Shared path connection to Laratinga Trail and Bald Hills Road
- 3 Entry to carpark
- 4 Accessible parking bays located for convenience adjacent to each entry point
- 5 Double aisle parking bay with integrated plantings, swales and pathways
- 6 Swales and rain gardens to capture and treat runoff from carparks, roof and pavements. Plant with native sedges and endemic vegetation. Path connections with boardwalks linking to entrance and parkland.
- 7 Entry plaza with seating and bicycle parking. Trees and vegetation to frame architecture and create legible entry points
- 8 Bicycle Parking
- 9 Service access to plant
- 10 Services corridor with clearance from existing trees
- 11 Temporary road connection for service vehicles and buses
- 12 Overflow parking area if required





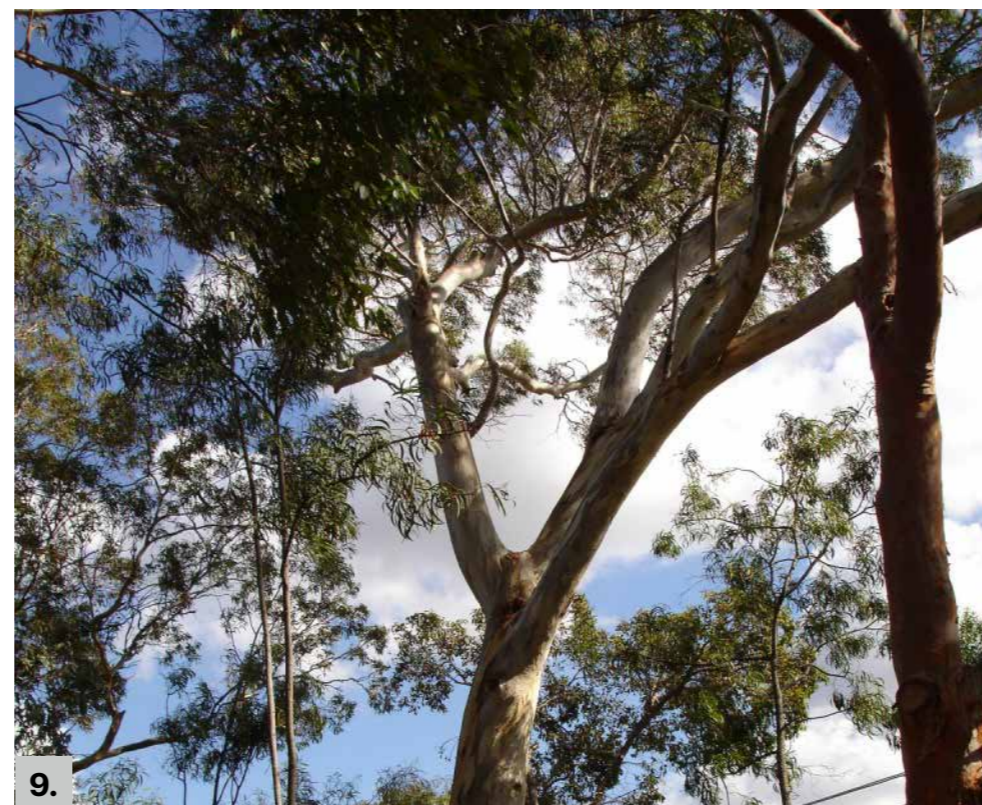
The landscape experience will be inspired by three key themes of **NATIVE WOODLAND** with endemic plantings from the region with Red Gums, Blackwood and South Australian Blue Gums shading paths and public space. **RIPARIAN** with native sedges, grasses, low shrubs and groundcovers planted within swales and garden beds to treat stormwater runoff and contribute to biodiversity in the area. **CULTURAL HERITAGE** with a strong connection to Aboriginal and European Heritage of the area with interpretation, use of natural materials, endemic plantings and restrained use of a feature oak tree as an accent.

- 1+2. *Acacia melanoxylon*
- 3. *Calytrix teragona*
- 4. *Correa reflexa*
- 5. *Goodenia ovata*

- 6. *Hardenbergia violacea*
- 7. *Grevillea lavandulacea*
var. *lavandulacea*
- 8. *Cyperus vaginatus*

- 9+10. *Eucalyptus leucoxyton* ssp. *leucoxyton*
- 11. *Leptospermum myrsinoides*
- 12. *Astroloma conostephiodes*
- 13. *Anthocercis angustifolia*

Plantings will be endemic to the regional with a mix of native grasses, sedges, shrubs, trees and groundcovers. These plants are adapted to the climate, soils and hydrology of the region which will contribute to the biodiversity of the corridor. They will offer seasonal colour throughout the year and will require minimal maintenance once established.



- 1. *Hibbertia sericea*
- 2. *Olearia ramulosa*
- 3. *Ajuga australis*
- 4. *Kennedia prostrata*

- 5. *Carex appressa*
- 6. *Myoporum parvifolium*
- 7. *Themeda triandra*
- 8. *Quercus robusta*

- 9. *Eucalyptus camaldulensis*
- 10. *Ficinia nodosa*
- 11. *Grevillea 'Winpara Gem'*
- 12. *Dianella revoluta*
- 13. *Cheiranthra alternifolia*

A feature Oak tree will be used as an accent tree planted on its own as a reference to the Adelaide Hills farmland feel and history of the site. This will also connect to the specimens of the Carob and Oak adjacent to the heritage stone buildings on the site.

Vistas will be retained to the existing Red Gums onsite which are a key asset and feature.





FEATURE CAREY GULLY SANDSTONE



LITTLEHAMPTON BRICKS



IN SITU CONCRETE PAVEMENT



TIMBER BRIDGES/ BOARD WALKS



COMPACTED SAND INFORMAL PATHS



TIMBER SEATING

LOOKING SOUTH EAST - The entry road will meander around the existing red gums to maintain the rural hills experience. Native grasses and groundcovers will provide amenity at the entry while allowing long views into the site towards the building and landscape.

montage 1 ENTRY EXPERIENCE



LOOKING NORTH EAST - The carpark will be articulated and divided with vegetated swales and rain gardens to treat stormwater while providing shade and amenity. Accessible pathways which be integrated for safe connections to the facility.

CENTRAL SWALE - CARPARK AND ENTRY



LOOKING NORTH EAST - All stormwater runoff will be channelled into vegetated swale for treatment prior to entering Mount Barker Creek. The building is nestled between existing Red Gums to capture views from inside as well as paths around the facility.

montage 3
PARKLAND NORTHERN CONNECTION

