



NAIRNE VILLAGE GREEN

FINAL MASTERPLAN

13 SEPTEMBER 2019

Final Masterplan

The final masterplan focused on rearranging and refurbishing the key features within the Nairne Village Green to maximise usability and bring life back to the underutilised spaces within the reserve.

By relocating the toilets to the rear of the CFS and the RSL Cenotaph to the western side of Jeffrey Street, the whole reserve opens up and creates an enticing address to the main street, encouraging people to permeate through the space. This creates the opportunity to activate this newly opened portion of the reserve and build upon the existing program of the site by introducing a new playspace and skate spot. The visibility from the main street encourages passive surveillance and ensures access to amenity encouraging people to stay in the space for longer. The inclusion of the new car park adjacent the railway line, better services the access requirements for the CFS volunteers during an emergency, whilst also providing all abilities access to the toilet and playspace with the inclusion of a new disabled car park and path network.

It was evident from the community consultation that most people access the reserve on foot. By upgrading and creating new footpath connections throughout the site, the final masterplan considers the safety and convenience of pedestrians, while also acknowledging the spectacle of the passing trains.

The proposed location of the RSL Cenotaph elevates it within the space and orientates it to ensure that the Cenotaph maintains its visual prominence from the main street. This also removes the visual competition with the sculpture as part of the Hills Sculpture Trail.

By removing the fencing from the old netball courts and replacing the surface with a turf kickabout space, events associated with the RSL can be better facilitated in this larger open space. All abilities access has been achieved with a new car park to Cockburn Street including one disabled car park. A new main footpath connection across the site with the installation of kerb ramps to Jeffrey Street connects the two portions of the reserve. The installation of stairs from the memorial garden lead you from the main street to the RSL memorial while also providing the opportunity for a memorial walk.

The focus for the southern end of the site is on upgrading the existing assets and improving access with the inclusion of a new car park and pedestrian network. Resurfacing and providing new multi-use linemarking and a basketball back board would encourage different users to the site whilst still facilitating the existing use. The masterplan capitalises on the views overlooking the whole site on the corner of Jeffrey St and Allargue St by suggesting the location of a cultural garden with opportunities to celebrate the Peramangk history of the site.

0 50





Detailed Masterplan



Key

- ① Retain stone memorial gardens
- ② New pedestrian access
- ③ Upgrade gardens including central feature and increase landscape amenity
- ④ New stepped access to village green
- ⑤ Nairne Village Green and kickabout
- ⑥ Footpath connections
- ⑦ Accessible car park
- ⑧ Memorial walkway
- ⑨ Cenotaph (relocated) with flag poles and illuminated wall to back of screen
- ⑩ Landscape boundary to railway corridor with open post, rail and wire fencing
- ⑪ Picnic bench, shelter and barbecue
- ⑫ New compliant pram ramp & crossing point
- ⑬ Perimeter fencing

0 25





- 01. Village Green and kickabout space
- 02. Cenotaph relocated to Village Green
- 03. Upgrade of garden beds to Stone Memorial Garden
- 04. Informal lawns
- 05. Memorial Walkway as part of Cenotaph
- 06. Lawn and car park area provides space for markets and other community events

Play and Youth



Key

- ① Mainstreet garden and sculpture park
- ② Central access path
- ③ Mural wall (update and relocate existing murals)
- ④ Flying fox (20m)
- ⑤ Timber rope scramble and nest swing
- ⑥ Central seating area with bike racks
- ⑦ Skate and scooter park
- ⑧ Nature play and mounding
- ⑨ Look out (train viewpoint)
- ⑩ Shelter and bench
- ⑪ Covered access way
- ⑫ New toilet (1 disabled and 4 cubicles)
- ⑬ Accessible car park
- ⑭ Priority parking for CFS (4) rumble strip to entry
- ⑮ Reserve land outside cadastral boundary
- ⑯ New compliant pram ramp and crossing point
- ⑰ Car park with gravel surface (tree sensitive construction)
- ⑱ New post, rail and wire fencing (alternative location for murals)
- ⑲ New compliant pedestrian rail crossing
- ⑳ New post and wire fencing to edge of playspace

0 25



- 01. Lawn mounding and shelter
- 02. Skate ramp and small scale grinding rails
- 03. Nature play with play sculptures
- 04. Concrete skate and scooter area
- 05. Log steppers and balance beams
- 06. Flying fox



Recreation and Cultural Garden



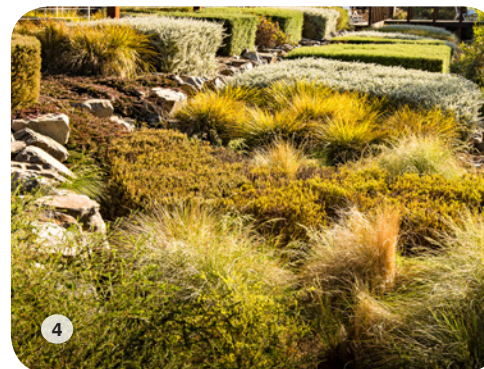
Key

- ① New gravel car park
- ② Re-purposed clubrooms with benches and shelter
- ③ Clean and repair tennis court surface
- ④ Repaired stepped access
- ⑤ Multi-court surface to existing court with basketball backboard
- ⑥ Maintenance access
- ⑦ Pedestrian access
- ⑧ Spectator lawns
- ⑨ Manage landscape to embankment
- ⑩ Future location for exercise equipment
- ⑪ Lookout with representation of Indigenous culture including seating, public art and signage
- ⑫ Open post, rail and wire fencing to railway corridor. Remove gate access across train tracks

0 25



01. Cultural lookout and viewpoint with seating and interpretation
02. Basketball back board
03. Repainted multi-court to increase recreational value
04. New garden beds and tree planting to increase amenity and landscape value
05. Resurfaced tennis court

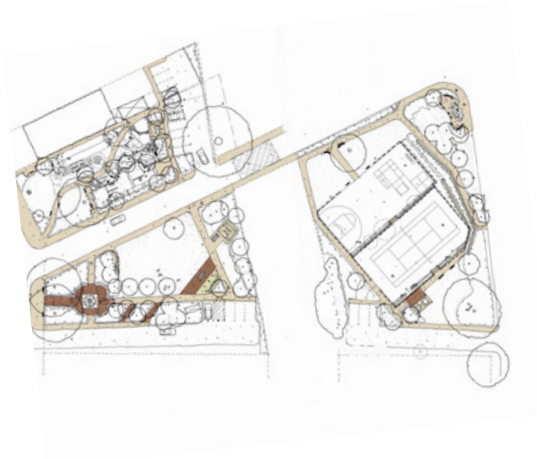


Masterplan Elements

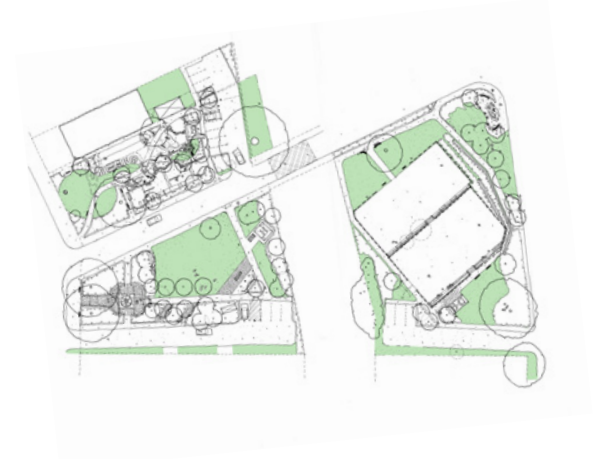
Trees



Footpath



Lawn



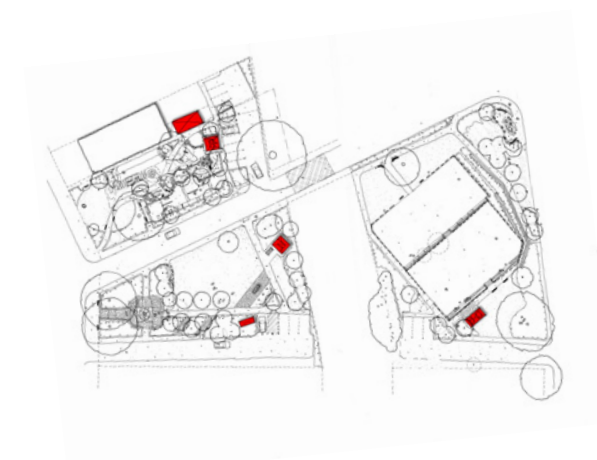
Garden Beds



Carparks



Structures



Conclusion

The Village Green remains one of the prominent reserves within the Nairne township and should emanate the town's combination of scenic beauty, history and quality of life. This will help to reinforce the social, environmental and economic potential of the town. Only by understanding the Village Green's character as well as its issues and opportunities, (both subtle and obvious), can appropriate actions be generated that will enhance and progress the unique qualities of the reserve.

The community of Nairne has been instrumental in providing the strongest possible foundations for this report. Their insight, commitment and vision has created a Village Green masterplan that responds directly to the needs and aspirations of the Nairne community. The development of the 13 project principles provides an over-arching focus for the future Village Green informing the detailed design and programming of this space.



Village Green - Artist Impression



Play and Youth - Artist Impression