




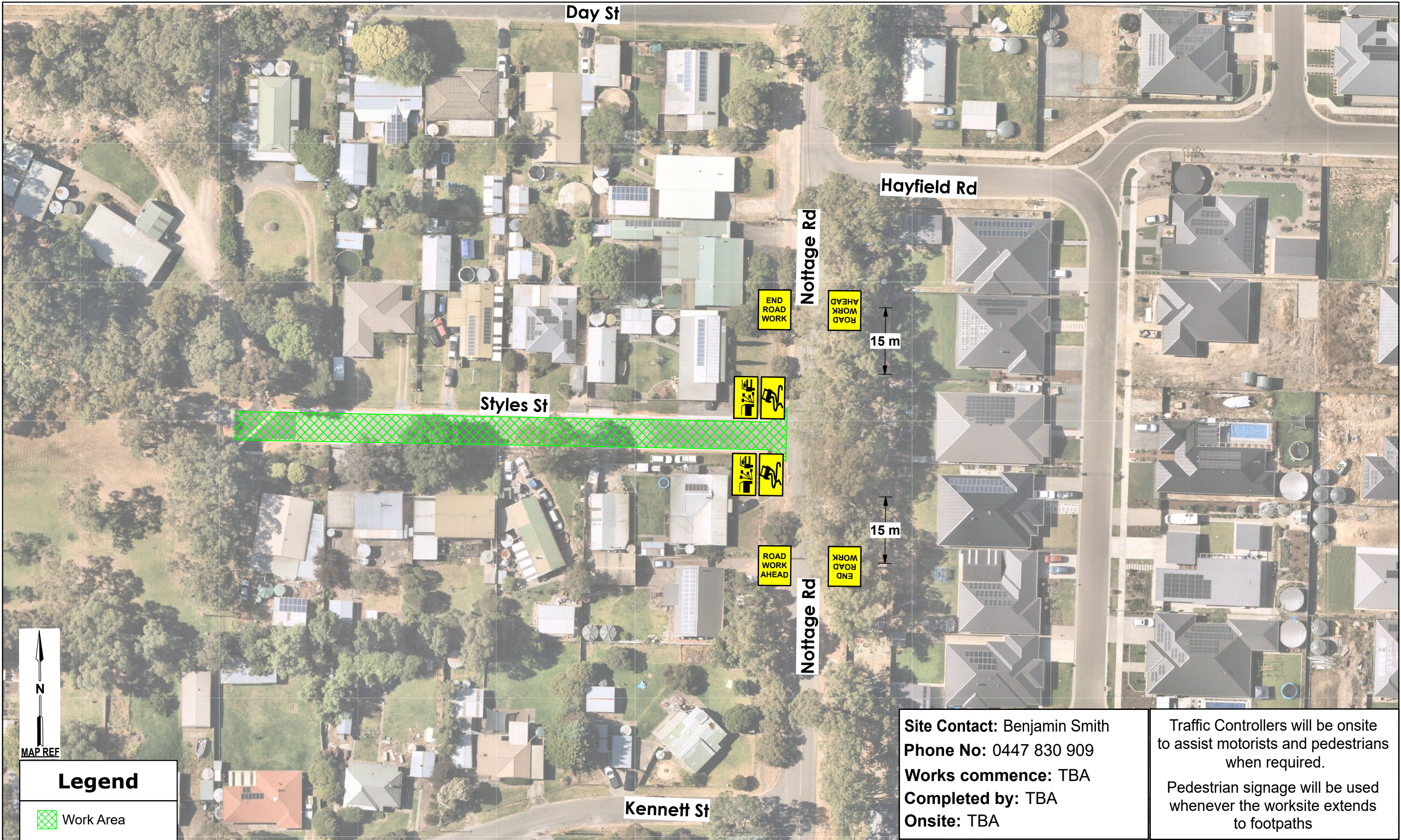
**Site Contact:** Benjamin Smith  
**Phone No:** 0447 830 909  
**Works commence:** TBA  
**Completed by:** TBA  
**Onsite:** TBA

Traffic Controllers will be onsite to assist motorists and pedestrians when required.

Pedestrian signage will be used whenever the worksite extends to footpaths

					CLIENT:  Downer Group		<div> Relationships creating success</div>	NOTES: - THIS TRAFFIC GUIDANCE SCHEME WAS DEVELOPED BY COMPETENT AND EXPERIENCED PERSONS AND IN ACCORDANCE WITH THE REQUIREMENTS OUTLINED IN "SA STANDARDS FOR WORKZONE TRAFFIC MANAGEMENT", AS THIS STANDARD THEN REFERS TO AS1742.3. BEFORE THE COMMENCEMENT OF ROUTINE SERVICES OR ANY ORDERED WORKS, ALTUS WILL CARRY OUT A RISK ASSESSMENT AND DEVELOP CONTROLS, MEASURES AND PLANS TO IDENTIFY, ELIMINATE OR MITIGATE ANY HAZARDS. - THIS PLAN WAS DEVELOPED TO ALLOW FOR THE SAFE MOVEMENT OF VEHICULAR AND PEDESTRIAN TRAFFIC AROUND THE WORKSITE, THE PROTECTION OF WORKERS FROM PASSING TRAFFIC, THE PROVISION FOR ACCESS TO PROPERTIES LOCATED WITHIN THE LIMITS OF THE WORKSITE, THE IMPLEMENTATION, MAINTENANCE AND REMOVAL OF ANY NECESSARY TEMPORARY ROADWAYS AND DETOURS, THE PROVISION OF TRAFFIC CONTROLLERS, THE INSTALLATION OF TEMPORARY SIGNS, TEMPORARY ROAD DELINEATION, AND ANY OTHER SAFETY MEASURES OR CONTROLS SUCH AS SAFETY BARRIERS WHEN REQUIRED. - ALTUS TRAFFIC DOES NOT ACCEPT RESPONSIBILITY FOR COMPLIANCE OF THIS PLAN WHEN IMPLEMENTED OR MONITORED BY EXTERNAL PARTIES. - THIS PLAN IS NOT TO SCALE AND IS A REPRESENTATION ONLY AFTER A JOB SAFETY ANALYSIS IS COMPLETED ON SITE CHANGES MAY BE MADE BY ACCREDITED PERSONS. ALL AMENDMENTS WILL BE OUTLINED AND RECORDED IN A WORKSITE DIARY / SWMS FORM.		SCALE:  NOT TO SCALE		PROJECT:  Styles Street Meadows SA Mount Barker		STATUS:  FINAL CONCEPT	
								DESIGNED:  Kos Kosgallana		DATE:  03/02/2023		TITLE:  Traffic Guidance Scheme Road Works Speed Restriction		<div> Safely Managing Risk</div> <div>Call Altus Traffic Toll Free (Australia) 1300 TRAFFIC (872 334) ABN 84 102 768 061</div> <div></div>	
								APPROVED:  David Croft							
								DRAWING NUMBER:  1042664-S06-P01-V00							
									SHEET NO:  1/2		ISSUE:  0				
ISSUE	DESG	APPD	DATE	AMMENDMENT DESCRIPTION											










**Legend**

Work Area

**Site Contact:** Benjamin Smith  
**Phone No:** 0447 830 909  
**Works commence:** TBA  
**Completed by:** TBA  
**Onsite:** TBA

Traffic Controllers will be onsite to assist motorists and pedestrians when required.  
  
Pedestrian signage will be used whenever the worksite extends to footpaths

					CLIENT:  Downer Group		NOTES: - THIS TRAFFIC GUIDANCE SCHEME WAS DEVELOPED BY COMPETENT AND EXPERIENCED PERSONS AND IN ACCORDANCE WITH THE REQUIREMENTS OUTLINED IN "SA STANDARDS FOR WORKZONE TRAFFIC MANAGEMENT", AS THIS STANDARD THEN REFERS TO AS1742.3. BEFORE THE COMMENCEMENT OF ROUTINE SERVICES OR ANY ORDERED WORKS, ALTUS WILL CARRY OUT A RISK ASSESSMENT AND DEVELOP CONTROLS, MEASURES AND PLANS TO IDENTIFY, ELIMINATE OR MITIGATE ANY HAZARDS. - THIS PLAN WAS DEVELOPED TO ALLOW FOR THE SAFE MOVEMENT OF VEHICULAR AND PEDESTRIAN TRAFFIC AROUND THE WORKSITE, THE PROTECTION OF WORKERS FROM PASSING TRAFFIC, THE PROVISION FOR ACCESS TO PROPERTIES LOCATED WITHIN THE LIMITS OF THE WORKSITE, THE IMPLEMENTATION, MAINTENANCE AND REMOVAL OF ANY NECESSARY TEMPORARY ROADWAYS AND DETOURS, THE PROVISION OF TRAFFIC CONTROLLERS, THE INSTALLATION OF TEMPORARY SIGNS, TEMPORARY ROAD DELINEATION, AND ANY OTHER SAFETY MEASURES OR CONTROLS SUCH AS SAFETY BARRIERS WHEN REQUIRED. - ALTUS TRAFFIC DOES NOT ACCEPT RESPONSIBILITY FOR COMPLIANCE OF THIS PLAN WHEN IMPLEMENTED OR MONITORED BY EXTERNAL PARTIES. - THIS PLAN IS NOT TO SCALE AND IS A REPRESENTATION ONLY AFTER A JOB SAFETY ANALYSIS IS COMPLETED ON SITE. CHANGES MAY BE MADE BY ACCREDITED PERSONS. ALL AMENDMENTS WILL BE OUTLINED AND RECORDED IN A WORKSITE DIARY / SWMS FORM.		SCALE:  NOT TO SCALE		PROJECT:  Styles Street Meadows SA Mount Barker		STATUS:  FINAL CONCEPT	
					 Relationships creating success		DESIGNED: Kos Kosgallana		DATE: 03/02/2023		TITLE:  Traffic Guidance Scheme Road Works Aftercare Plan		 Safely Managing Risk  Call Altus Traffic Toll Free (Australia) 1300 TRAFFIC (872 334) ABN 84 102 768 061     SCI QUAL INTERNATIONAL SCI QUAL INTERNATIONAL SCI QUAL INTERNATIONAL	
							APPROVED: David Croft							
							DRAWING NUMBER: 1042664-S06-P02-V00							
							SHEET NO: 2/2		ISSUE: 0					
ISSUE	DESG	APPD	DATE	AMMENDMENT DESCRIPTION										