



MOUNT BARKER
DISTRICT COUNCIL

Kanmantoo

Township Plan

APRIL 2024



Acknowledgement of Country

Council would like to acknowledge the traditional owners and custodians of the lands of the township of Kanmantoo. We respect the First Nations people and their spiritual relationship with their country and their cultural and heritage beliefs.

Image credit: David Booth, mural at Summit Sport and Recreation Park (SSRP), Mount Barker

Front cover image: Main Street, Kanmantoo



CONTENTS

INTRODUCTION

01_Purpose	05
02_Background & how to read the plan	07
03_The plan	08
04_Summary	10
05_Context	12
06_Guiding themes & principles	14

EXPLORE THE PLAN

07_Heritage, character & identity	18
08_Connected communities	20
09_Access & movement	22
10_Open space & community facilities	26
11_Economic development, growth & tourism	28
12_The Main Street	30
13_Sustainability & the environment	32
14_Infrastructure	34

IMPLEMENTATION

15_Implementation plan	36
------------------------	----



01 PURPOSE

The Kanmantoo Township Plan (the Plan) will guide the future of Kanmantoo over the next 20 years. It is intended to assist the Mount Barker District Council in the planning, coordination and delivery of projects and services for the township. It will also inform initiatives of external agencies such as community groups, private individuals, government agencies and the business sector who play a pivotal role in the future of Kanmantoo. The Plan will:

- Provide a long term vision for the township of Kanmantoo
- Identify opportunities to facilitate economic prosperity
- Respond to the changing diverse needs of the community
- Describe priorities and opportunities for improving infrastructure, the public realm and open space.

Local, environmental, demographic, social and economic factors have been considered in the preparation of this plan.



Background & How to Read the Plan

Through November and December 2023, Council ran community consultation on a draft township plan for Kanmantoo. The feedback received was reviewed and largely informed the preparation of this township plan.

Background

On 6 November 2023, Council endorsed the Kanmantoo Township Plan to proceed as a draft for public consultation. The draft township plan was then taken to the community for a 28 day consultation period running from Wednesday 15 November to Wednesday 13 December 2023.

The purpose of the draft township plan was to stimulate discussion and present issues and potential actions to be implemented across Kanmantoo. The consultation subsequently elicited feedback on the proposed priorities and key directions set by the draft plan and remained open for further issues to be raised by the community.

As part of the consultation phase, postcards were distributed to all post boxes in the township, a YourSAy page was opened with option to complete a survey or provide open feedback and a drop in open day held on Saturday 2 December 2023. There was active participation throughout the consultation period, which included:

- close to 300 views of the YourSAy page
- 30 completed surveys
- 5 written submissions
- approximately 50 attendees providing direct contribution to the township planning process during the drop in session.

Council staff engaged individually with community members and organisations during the consultation period. A detailed report on the summary of consultation was presented to Council on 2 April 2024. To view this report, go to: www.mountbarker.sa.gov.au and open the 2 April Council agenda.

How to read this Plan

This Plan has been broken up into two sections.

The first section provides an introduction and includes information about Kanmantoo. It will also outline the key themes of the Plan and guiding principles.

The second part of the Plan takes a more in-depth look at each of the key themes. This section is under the heading of Explore the Plan. Also included in this section is the implementation plan, which sets out priorities for each specific action.

This report is structured as follows:

01. INTRODUCTION

Introduces the Plan and provides a summary of the Plan, its presentation and guiding principles.

02. CONTEXT

Provides a background to Kanmantoo, including the issues and opportunities that influence the Plan.

03. PLAN THEMES AND PRINCIPLES

Provides an overview of the eight key themes and the guiding principles which underpin the Plan.

04. EXPLORE THE PLAN

Provides an in-depth look at the Plan, looking into each of the identified themes in detail.

05. IMPLEMENTATION PLAN

Lists all actions to be implemented as part of the Plan, with priorities/ time frames to be determined following further engagement.

03 THE PLAN

1 Enhance town entrances

- Update and improve the township entrances at the northern and southern ends of the Old Princes Highway.
- Improving entrances will aim to provide a sense of place as well increase civic pride.

2 Improve pedestrian and cycling links throughout the town

- Identify common routes for pedestrians and cyclists and look to make improvements to enable safe and convenient access to key destination points (e.g. bus stops and public reserves).

3 Recreation and community facilities

- Review facilities available at Hutton Reserve to establish if there is a need for renewal, increased capacity or redesign that caters to different user groups.
- Reinforce Hutton Reserve as the primary reserve for Kanmantoo.
- Look to develop an informal recreation trail to provide a pleasant pathway following the creek line and connecting the southern end of the main street with the Town Hall.
- Investigate alternative options for use of the space at Lot 134 Mine Road, currently accommodating a BMX bike track.

4 Enhance and protect heritage

- Advocate and support the continued protection and use of heritage places and the Kanmantoo Historic Area.
- Celebrate the cultural and historic links of the town through public art/ signage of significant features.
- Further highlight the Town Hall, with improved access from the main street, updated signage and more practical facilities to increase useage and possibly allow for tourism or commercial activation.





5 Main Street

- Promote the development and use of a range of small scale shops, offices, businesses, health and community facilities that provide daily services and support walkable neighbourhoods, in line with the expectations of the Local Activity Centre zone.
- Work with various stakeholders to improve employment opportunities with current and future businesses through knowledge of grants and resources.

6 Hazard reduction and environmental rehabilitation

- Review flood hazard mapping across Kanmantoo and Callington.
- Undertake revegetation and stabilisation works (where possible) along degraded sections of the creek line.
- Environmentally appropriate species planting along prime walking and access routes.

7 Investigate waste and recycled water

- Undertake investigations for the transition of waste water services from on site septic to a Community Wastewater Management System (CWMS).
- Seek opportunities with prospective customers on the sale of recycled water on a commercial basis.

8 Community resilience and support

- Council to continue to engage with Neutrog, Hillgrove Resources and Hanson (Kanmantoo Bluestone) to ensure mutually beneficial outcomes for the economy, environment and community.
- Show support for mining related tourism opportunities through the Kanmantoo Callington Community Consultative Committee (K4C) and Hillgrove Resources.
- Ensure proximate industries remain cognisant of amenity and general community concerns.

04 SUMMARY

The Kanmantoo Township Plan looks to set a vision for improvements to the township over the short, medium and long term. The final plan has identified three top priorities for the township over the next five years to celebrate the heritage and culture of the area, improve township entrances and undertake a review of flood mapping across the township.

The vision

Kanmantoo has an exciting future over the next 20 years with new investment in mining and mineral processing having the potential to drive economic growth in the short to medium term.

Over the longer term (greater than 20 years), alternative sectors such as general industry, agriculture and tourism (heritage, mining and environmental) will gain prominence.

The heritage and cultural identity of Kanmantoo is of significant importance and should be highlighted and retained in conjunction with the continued involvement of its active community.

Implementation and priorities

Implementation of the Plan is to be prioritised by high to low and ongoing priorities. The intended timeframe and priority for each proposed action listed in the implementation plan is to be determined following further engagement with the community.

Key themes

The themes have been developed to address key opportunities that the Plan seeks to address.

The themes include:

1. Heritage, character and identity
2. Connected communities
3. Access and movement, and infrastructure
4. Open space and community facilities
5. Economic development, growth and tourism
6. The Main Street
7. Sustainability and the environment
8. Infrastructure

Each theme has guiding principles which inform the intended actions and their priorities.

05 CONTEXT



Focus Area

The focus area for the plan is the township of Kanmantoo, however, it is acknowledged that much of the area’s economic activity occurs within the rural surrounds of Kanmantoo.

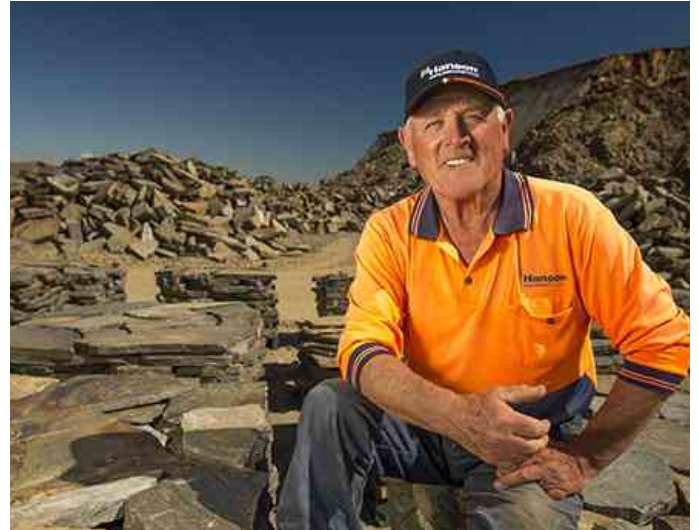
Council is aware of the strong cultural, social and heritage links between Kanmantoo and Callington and shall continue to foster this relationship where possible.

Community consultation

The draft township plan underwent a period of community consultation from 15 November to 13 December 2023.

Further details on this can be found on page 7 and in the summary of consultation report presented to Council on 2 April 2024 and available at www.mountbarker.sa.gov.au.

05 CONTEXT CONTINUED



European Settlement

Kanmantoo is one of the State's most significant copper mining towns.

Copper traces were discovered in the district by Joseph Lean on land belonging to the South Australian Company with mining beginning at the Paringa Mine in 1846

Subsequently the township of Kanmantoo was laid out by the South Australian Company in 1849. Since then Kanmantoo has continued to have significant links with mining and farming in the local area.

Demographics

The census resident population of Kanmantoo township in 2021 was 511 persons. This represents 1.3% of the population of the whole of the Mount Barker district (39,217). The population has been very stable over the years, with a listed population of 503 in 2011 and 512 in 2016.

In the 2021 census, children aged 0-14 years made up 25.4% of the population, adults aged 30-54 years made up 40.7%, and people aged 60 years and over made up 12.2%.

Family households made up 71.2% of all occupied dwellings, with an average of 2.8 persons per household. The breakdown of age groups indicates that the local population is largely made up of families.

Overall residential growth in Kanmantoo is limited by the availability of existing allotments within the township and additional constraints such as a lack of Community Wastewater Management System (CWMS) or mains sewer, meaning that each property is required to manage domestic waste water on private allotments.



Economy and tourism

Kanmantoo is a small rural township with a post office/ general store and cafe servicing its resident population and those in the surrounding rural areas.

The Kanmantoo Copper Mine has been a significant employer in the district. In 2019, Hillgrove commenced winding down production after announcing it would turn the pit into a pumped hydro facility. However, by 2021, Hillgrove announced there were further mining opportunities and the mine would expand.

Kanmantoo Bacon & Quality Meats is a long running local business that has been operating from the town for in excess of 42 years.

Other industries within the area include the Kanmantoo Bluestone Quarry and the Neutrog fertiliser and composting plant.

Overnight visitation to the town has been constrained due to a lack of tourist accommodation facilities.

Physical environment

Kanmantoo is located in the Bremer Valley region approximately 13 kilometres to the east of Mount Barker. The township is situated on a valley plain between undulating ridge lines to the north, east and west. The Kanmantoo mine is located on McFarlane Hill to the south west of the town.

The landscape has been largely cleared of original native vegetation for mining, smelting (fuel) and farming activities. Some areas of remnant Peppermint Box Grass Woodlands and Irongrass Natural Temperate Grasslands remain within areas surrounding Kanmantoo.

The Old Princes Highway runs through the township, providing access to Dawesley (10 kilometres) to the north, and Callington (6 kilometres) to the south. The interstate rail line is located approximately 3 kilometres to the southwest of the township, with the closest station at Murray Bridge, which provides occasional transport options between Adelaide and Melbourne.

06 GUIDING PRINCIPLES FOR THE PLAN

The following guiding principles have been used, in line with the eight key themes, to guide the preparation of this plan.

The guiding principles are:

1. Protect and enhance cultural heritage and identity of the Kanmantoo Township.
2. Ensure that Kanmantoo continues to grow as a connected and inclusive community
3. Actively promote the ease of connectivity of the Kanmantoo Township within the greater region.
4. Strategically and timely upgrade the existing open space where necessary. Promote diversity in open space opportunities and community facilities for all age groups.
5. Foster opportunity for increased investment within the township.
6. Re-vegetation of degraded landscapes.
7. Improve infrastructure provisions within identified and well-used locations. Ensure the renewal / upgrade of assets aligns with Council's Asset Management Plans.
8. Improve the main street to improve its visual appearance and its function as a commercial precinct and a safe and inclusive public realm.

The icons on the page over represent the key themes of the plan. You can explore each theme on the following pages. The creation of the themes was guided through discussions with both external community groups and government agencies.

Stakeholder input

Council acknowledges the master plan prepared by the 'Kanmantoo Callington Community Consultative Committee' (K4C). Council also acknowledge the ongoing work and openness that Hillgrove Resources and K4C have shown in relation to their work with the community.

Many of the desired outcomes listed in the K4C master plan are shared by this draft Plan and there is no conflict or misalignment between the documents, as was shown through Council's successful development of its township plan for Callington in 2020.

The K4C was established as a requirement of the Hillgrove Resources mining approval, with its master plan subsequently developed jointly by K4C and Hillgrove Resources. As given in the master plan and supported by Council, K4C will engage and participate with Council on township and regional development strategic planning processes.



HERITAGE, CHARACTER AND IDENTITY
(See page 18)



CONNECTED COMMUNITIES
(See page 20)



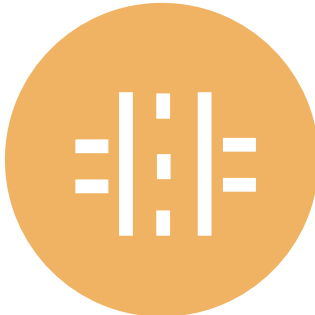
ACCESS AND MOVEMENT
(See page 22)



OPEN SPACE AND COMMUNITY FACILITIES
(See page 26)



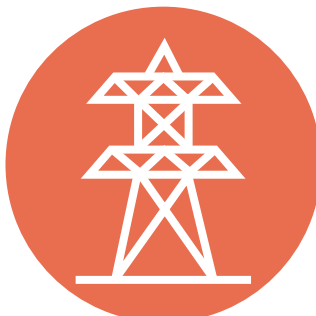
ECONOMIC DEVELOPMENT, GROWTH AND TOURISM
(See page 28)



THE MAIN STREET
(See page 30)



SUSTAINABILITY AND ENVIRONMENT
(See page 32)



INFRASTRUCTURE
(See page 34)

A photograph of a park area. In the foreground, a large, weathered log lies horizontally on a bed of dry, brown leaves. Several tree stumps of varying sizes are scattered across the middle ground. In the background, a swing set with green frames and a single swing is visible. The area is surrounded by various trees and shrubs under a clear blue sky.

Explore the Plan



07 HERITAGE, CHARACTER & IDENTITY



The earliest records of European settlement are of Scottish squatters and pastoralists in 1839 who were living in and around the area. In 1845 the Mount Barker Mineral Survey was lodged by the South Australian Company and Joint Applicants (McFarlane, Baker, Dutton, Hagen, Hart, Montefiore and Collyer). This survey divided the survey area into shares between each party. Mining commenced in the area around 1846 with mixed results.

While people would have been living around the mines, the township of Kanmantoo was not surveyed until 1849, with an initial release of 38 blocks on 27 July. Kanmantoo South, located on the southern edge of Kanmantoo along Mine Road, was later surveyed.

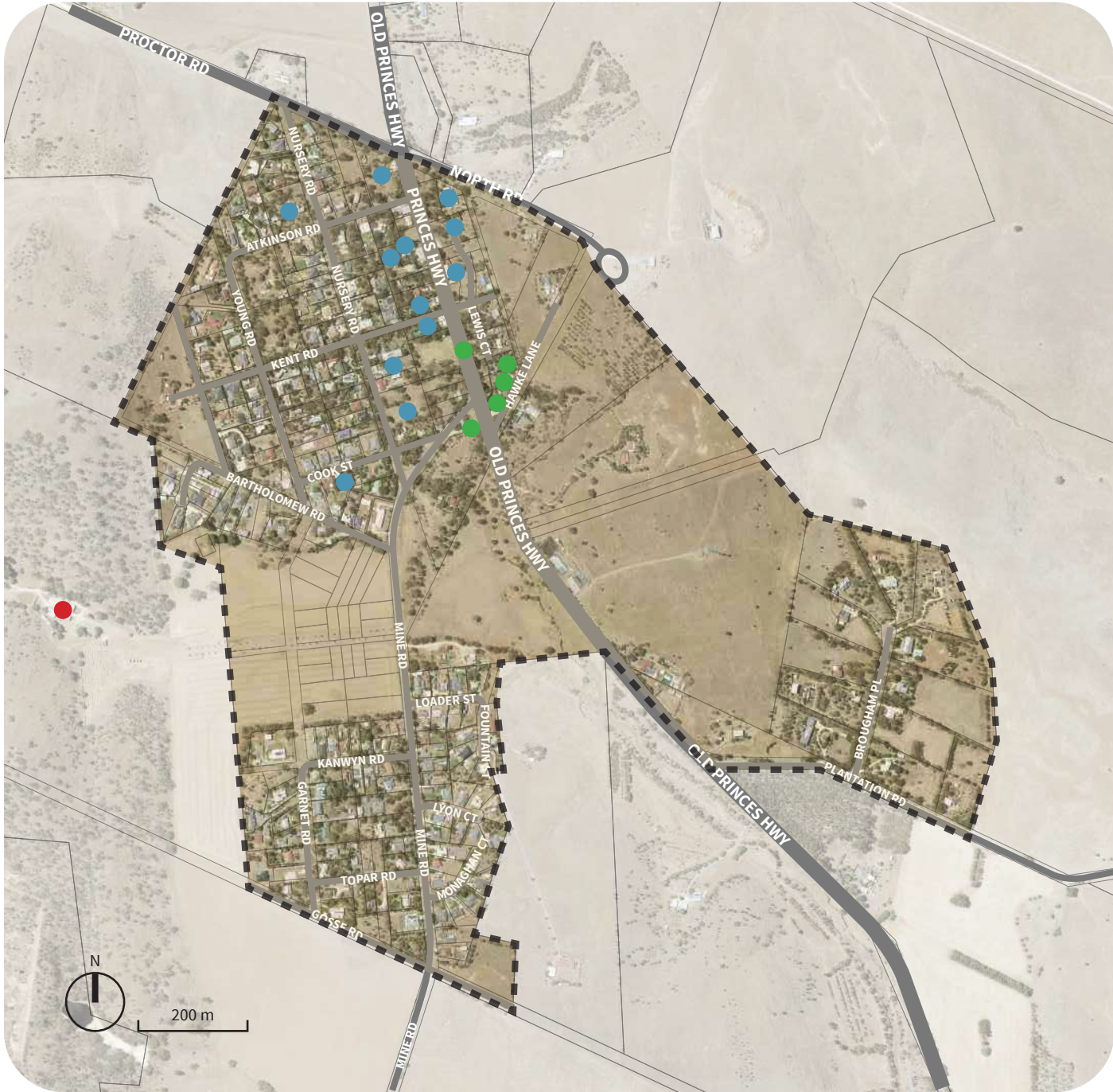
There is one State Heritage Listed item in Kanmantoo, being located at 25-30 Vineyard Road, on the western outskirts of Kanmantoo, this being the Kanmantoo homestead and winery complex (inclusive of house, outbuildings, David Unaipon's cottage and stone winery buildings). The homestead and winery complex are closely associated with the development of the Kanmantoo area, the viticultural development of the State with pioneer pastoralist Charles Burney Young and David Unaipon, who once occupied the previously mentioned stone cottage.

In 2004 the *DC Mount Barker District Wide Heritage Survey* was followed by the *District Wide Plan Amendment Report*, which sought the protection of historic character through establishing the Kanmantoo Historic Conservation Area within the Development Plan and which has since been carried over as an overlay in the Planning and Design Code. Within the township there are the following heritage items:

- One (1) State Heritage Place;
- Twelve (12) Local Heritage Places; and
- Five (5) Representative Buildings.

Actions

1. Ensure ongoing protection and enhancement of heritage places.
2. Celebrate the heritage and culture of the area through initiatives such as interpretive signage, public art installations and the materials chosen for public realm improvements. This should look to highlight events and/ or people of significance (including but not limited to the mining history to the town and the town's connection to David Unaipon) and include, when appropriate, collaboration with traditional owners in such acknowledgments and installations
3. Ensure future residential development occurs within the existing town boundary.



- X Specific proposal
- X General strategy
- Focus area
- Representative Building
- Local Heritage Place
- State Heritage Place



Kanmantoo Town Hall



Local Heritage Item, Old Princes Highway



Anzac memorial, Lewis Court

08 CONNECTED COMMUNITIES



A connected and inclusive community is a critical and necessary feature of rural towns such as Kanmantoo.

Community groups and local sporting clubs play an important role in creating a connected district. They provide opportunities for social interaction and assist in creating a support network that serves as an important check and balance for parts of the community. Providing physical spaces and facilities where people can come together is important for continuing to build community well-being.

Improved intra-town transport options and availability of in-home services will also assist to facilitate improved community wellbeing. Enabling younger members of the community to be active and engaged is also important. It is important to recognise the changing way in which younger generations are choosing to be active. This was quite visible during the Covid-19 pandemic, which saw a trend towards passive recreation and informal exercising.

Continuing to provide opportunities for informal recreation activities is important to ensure people remain engaged and active.

Actions

4. Continue the implementation of Council's Community Development Lead Strategy so that groups such as the Kanmantoo Callington Community Consultative Committee (K4C) and the Kanmantoo Grounds Committee are supported through a range of resources such as training and volunteering opportunities.
5. Support the community in establishing a residents' association, should there be a desire from the community for the creation of such a group, to assist in coordination of works and activities through the town.
6. Continue to operate the Hills Community Transport (HCT) service, ensuring demand is monitored and service is adapted as needed.



Town Hall, Kanmantoo

09 ACCESS AND MOVEMENT



Kanmantoo's Main Street is located along the Old Princes Highway, which is under the care and control of the Department for Infrastructure and Transport (DIT). The Old Princes Highway connects to Callington to the south and Dawesley to the north. This road experiences a two-way average of 1,100 vehicles per day, 100 of which are commercial vehicles (Source: DIT 2018).

A 60 kilometre per hour speed limit applies along the Main Street (Old Princes Highway), with 50 kilometres per hour applying to all other streets within the township including Mine Road. To the east of the township is an active rail corridor, which accommodates an interstate freight rail line. While the rail corridor is active, there is no active passenger railway station in Kanmantoo.

Pedestrian movement

Outside of the Main Street, pedestrian movement is largely informal in Kanmantoo, with limited sealed footpaths. The Main Street contains the only paved footpath, with side streets utilising the roadside verge areas for pedestrian movement. In key locations, it is considered that footpath infrastructure is in need of improvement, acknowledging its limitations for older residents, persons with a disability, and local families and youth within the community. The key location for review is Mine Road, leading from the Main Street to the Bike Park on Mine Road, in addition to a walking trail running parallel to the Old Princes Highway and partly following the creek line. This presents a real opportunity to connect the northern and southern ends of the town and provide a formal connection between all reserve spaces (the Town Hall, Hutton Reserve and the BMX track) and to the Main Street.

Cycling

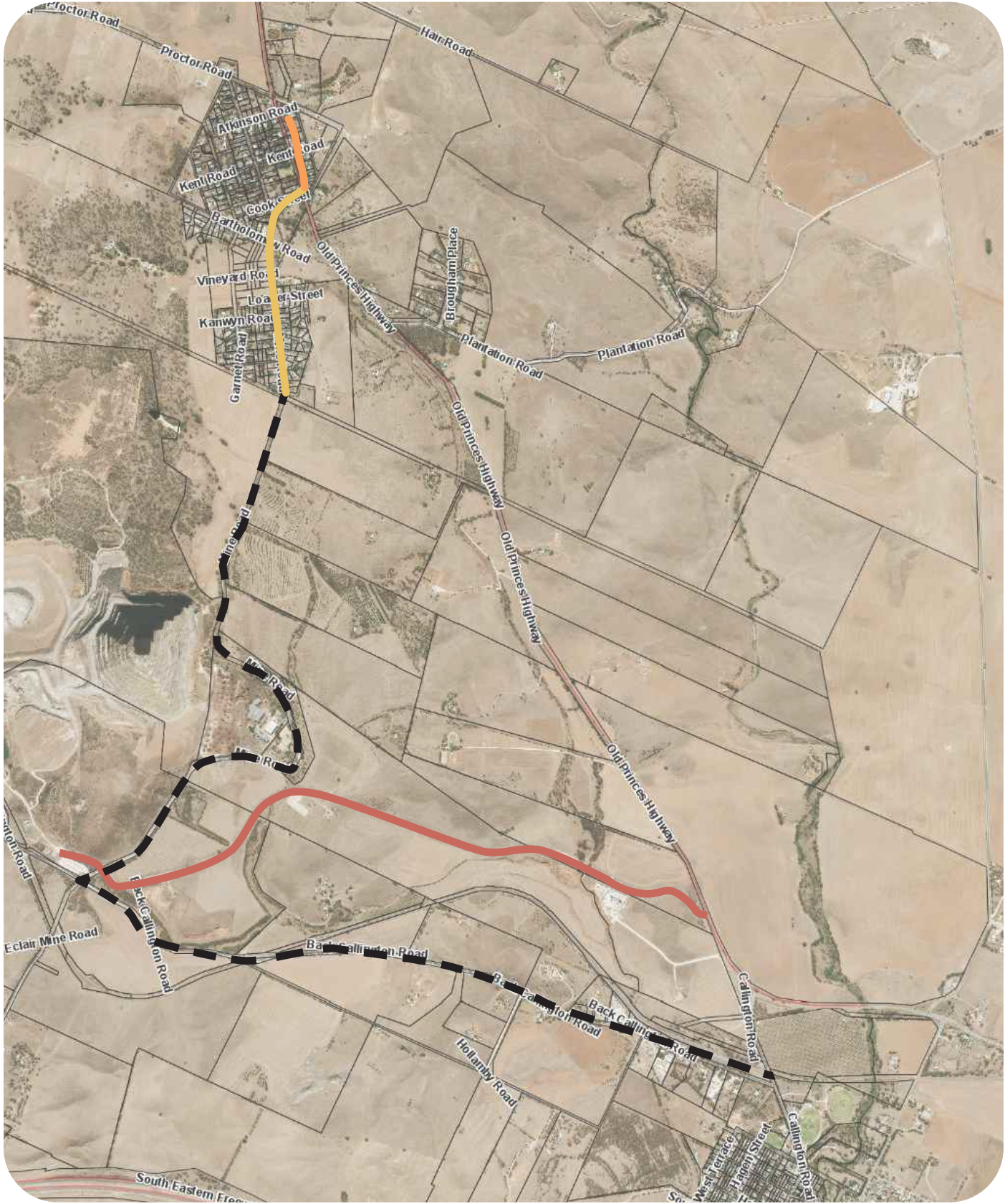
Apart from the Bike Park, cycling facilities are limited. Within the township, there is an opportunity to provide dedicated cycling routes/ paths in order to promote continued cycling activity for locals, particularly youth. Community consultation has raised on several occasions that residents, particularly youth, cycle between Kanmantoo and Callington on a fairly regular basis and would be supportive of any opportunity to increase formalisation and safety of such a route.

Public transport

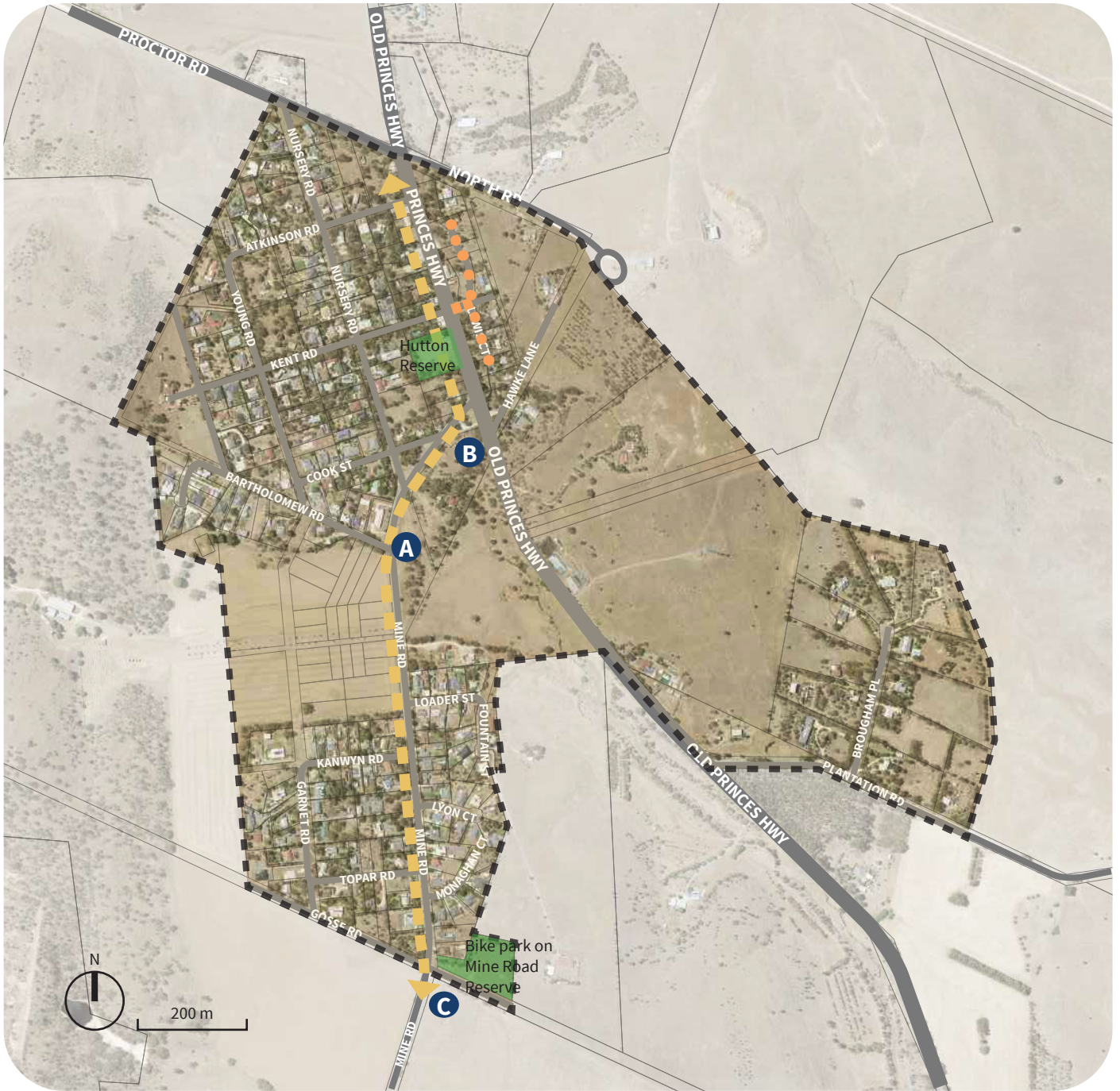
Kanmantoo is serviced by infrequent public transport connections between Mount Barker and Murray Bridge. Hills Community Transport offer information and bookings to assist community members with local travel. Currently this service operates in a limited capacity. Kanmantoo would benefit from the provision of improved public transport links with shops and services in Nairne, Mount Barker and Adelaide.

Actions

7. Advocate for improved public transport services and associated infrastructure for the township
8. In line with Council's footpath program, complete sealed footpath connection from the northern end to the southern end of the town, linking the existing path along the Main Street to the property at 47 Mine Road (Lot 134), including improvements to the Mine Road/ Cook Street bus stop. **A**
9. Review access and connections as part of Council's new footpaths strategy to provide all weather access along the extent of Kent Road, Atkinson Road and Young Road. **B**
10. Investigate a cycling and walking trail between Kanmantoo and Callington away from the Old Princes Highway. **C**
11. Investigate opportunities to minimise the impacts from truck movements from nearby industrial land uses (i.e. Hanson, Hillgrove and Neutrog) through proper and open responses to complaints received in relation to trucks traveling through the town and in use of private roads that act to bypass the township.



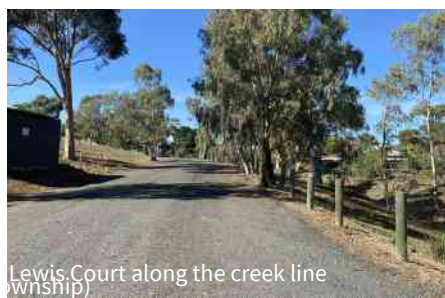
- Indicative truck route from Hillgrove Mine to the Old Princes Highway (bypass the town)
- Mine Road improvements / north-south pedestrian linkage
- Cycling and pedestrian link to Callington
- Informal recreational trail



- X Specific proposal
- X General strategy
- Focus area
- Connection from northern to southern ends of the town
- Informal recreation trail (walking / interpretive trail)



Pedestrian footpath on western side of Old Princes Highway (south of Hutton Reserve)



Lewis Court along the creek line (south of Hutton Reserve)



Entrance to Hutton Reserve from Old Princes Highway

To find out more visit us at www.mountbarker.sa.gov.au



Town entrance from the Old Princes Highway (north of township)

10 OPEN SPACE AND COMMUNITY FACILITIES



Public reserves in Kanmantoo are limited to Hutton Reserve, much of the space that runs along the creek line adjacent the Main Street and the BMX bike track at the southern end of the township. Larger ovals and organised recreational facilities are available in Callington.

Key open space areas are listed as Hutton Reserve, the Mine Road Reserve (i.e. BMX track/ bike park) and the Kanmantoo Hall and adjacent war memorial. There is an informal walking route used by locals along the creek line/ drainage reserve, which runs parallel to the Old Princes Highway for most of the length of the Main Street.

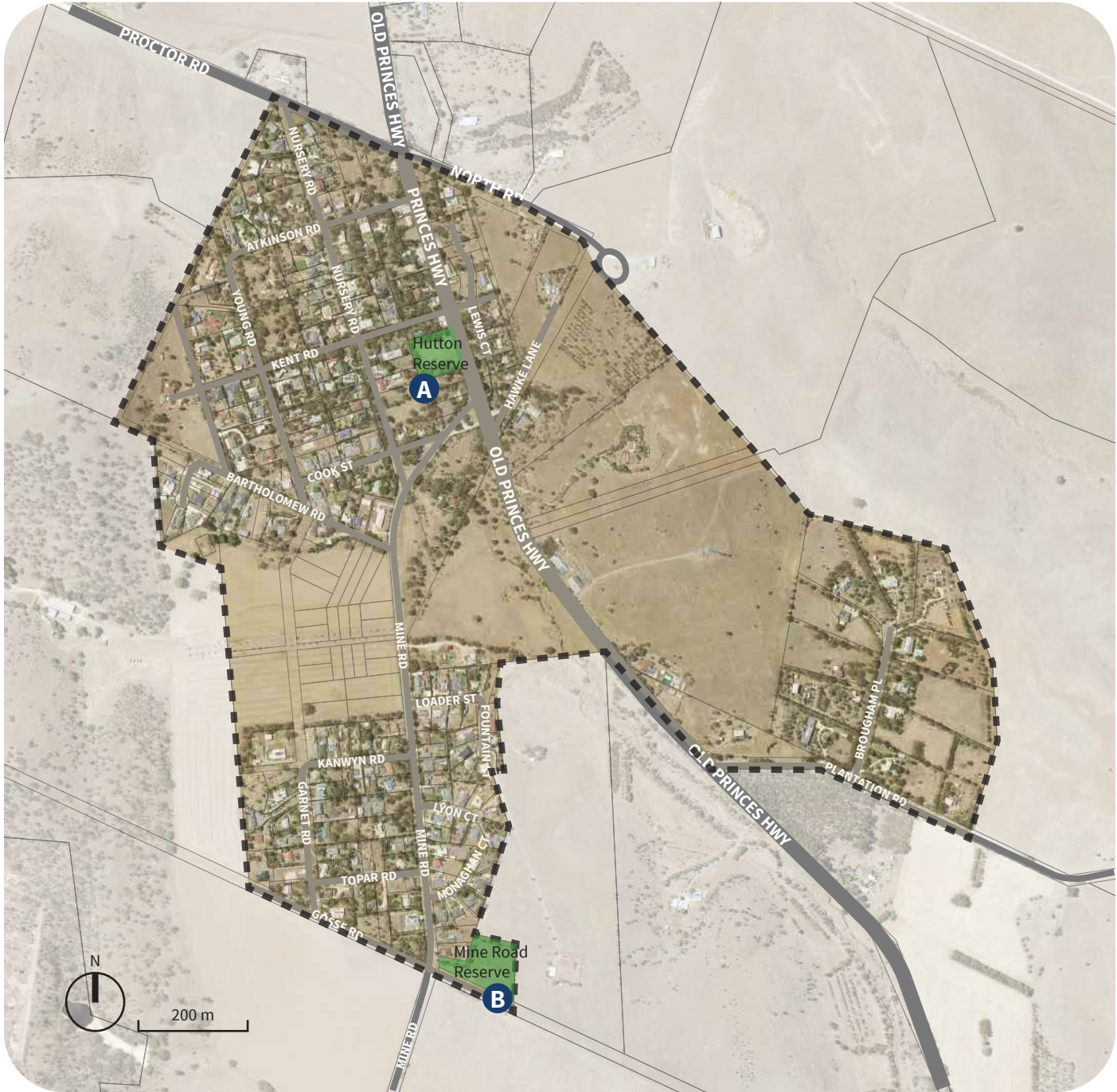
This Plan recognises that there is the potential to improve existing open spaces for the purposes of increased useability and safety. This could be done with the installation of footpaths, park benches, way-finding signage and outdoor play equipment.

There is a focus on providing areas for young families to use and for walking trails and outdoor experiences, which are accessible to older persons and people with disabilities. The continued use of existing community and recreation based facilities is encouraged.

Connectivity to open space, especially between Hutton Reserve and Mine Road Reserve, could be improved through provision of walking and cycling paths that link the two.

Actions

12. Through Council's existing 'Open Space and Trails Review and Update' (2023/24), ensure that Hutton Reserve is maintained as the town's primary reserve and consider additional open space/ trail facilities/ upgrades. **A**
13. Improve useage of the community bike track facility through possible alternate designs or land uses such as a nature reserve, off-leash dog park, private use or other. **B**
14. Work with the Kanmantoo Hall Committee to understand their long term needs with regard to access to the Town Hall and surrounding space for Anzac day and other occasions of community significance and in promoting the broader use of the Town Hall and surrounds through physical improvements such as toileting facilities, lighting, access, signage or other works.



- X Specific proposal
- X General strategy
- Focus area
- Key public open space



Shelter at Hutton Reserve



Entrance to Kanmantoo bike park at Mine Road Reserve



Kanmantoo bike park at Mine Road Reserve

11 ECONOMIC DEVELOPMENT, GROWTH AND TOURISM



As a township, Kanmantoo was historically founded as a mining town that grew from the discovery of copper within the area. General farming activities have also been a constant economic driver for the town.

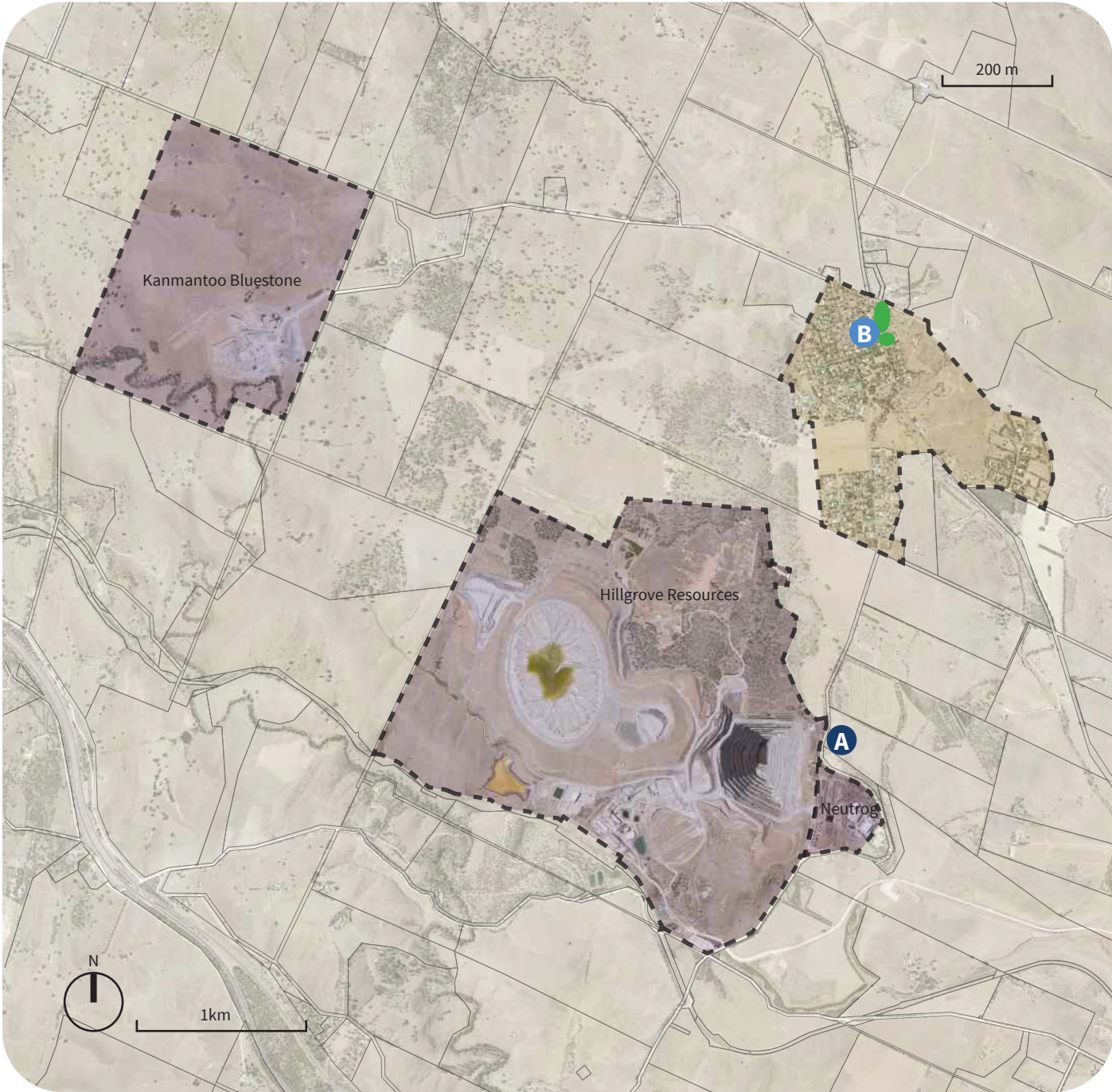
The nearby Hillgrove Resources Kanmantoo Copper Mine commenced open pit mining in December 2010 and moved to underground operations in May 2023. Adjacent to Hillgrove Resources is the Neutrog Biological Fertiliser plant. Both facilities sit approximately 1.5 kilometres from the southern edge of the Kanmantoo township and are clear drivers of economic development and employment for the area. Additionally, the Hanson Quarry, sited on Proctor Road, approximately 4 kilometres to the west of the town, produces raw stone via an open cut mine.

As with other rural townships, Kanmantoo has a number of different primary industries and industrial land uses within proximity of the township. Ensuring that residential land uses and primary production/ industrial land uses can coexist is important to ensuring the liveability and economic prosperity of the town.

It is imperative that a balance be achieved whereby the industrial land uses mentioned above can operate in a lawful and sustainable manner and not hinder the ability for commercial uses within the town to establish and prosper.

Actions

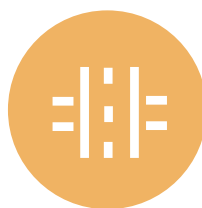
15. Partner with K4C to develop mining related tourism, taking advantage of equipment that Hillgrove Resources have such as walking trails, rehabilitation sites, historic buildings/ sites and/ or lookouts. **A**
16. Work with new and established local businesses to improve opportunities and knowledge of grants and resources by linking them in with Council's Economic Development team for tailored advice. **B**
17. Seek opportunities with prospective customers on the sale of recycled water on a commercial basis, achieving environmental, economic and social benefits to the community.



- X Specific proposal
- X General strategy
- Kanmantoo Township
- Key industrial areas
- Existing local businesses



12 THE MAIN STREET



The Kanmantoo Main Street extends along the Old Princes Highway, from Proctor Road to the north to Cook Street to the south. This portion of the Old Princes Highway is characterised by a number of large eucalypts with some exotic plantings and overhead powerlines for most of its length. The eastern side of the Main Street is largely open, with only one property directly fronting and gaining access from the highway (19 Old Princes Highway). The western side is predominantly residential in nature, with buildings fairly close to the street and low in scale. A red brick paved footpath along with a heritage bluestone guttering and kerb helps to identify the Main Street and runs along its western edge.

Council's Economic Development Strategy (2022-2027) identifies Main Street precincts and their growth and support for small and medium enterprises as being a key for economic prosperity within smaller townships.

The central portion of Kanmantoo's Main Street is in the Local Activity Centre zone (the section between Atkinson Street and Kent Road). There are, however only two commercial businesses that are presently in operation. Commercial development and uptake within the zone should be promoted, with the size of the commercial precinct large enough to cater for the township and with a relatively high level of through traffic. Council will continue to monitor the use of the Main Street to ensure that the current zoning is fit for purpose and is open to feedback on this topic.

The Main Street is covered by the Kanmantoo Historic Area Overlay, identified in the Planning and Design Code as including characteristics of an identifiable historic, economic and/ or social theme of recognised importance, and includes several local heritage places and representative buildings. Within the Main Street, signage outlining the historical significance of many of the existing buildings and former residents would assist in creating a greater sense of place and pride and could establish the town as one that has a level of tourism significance.

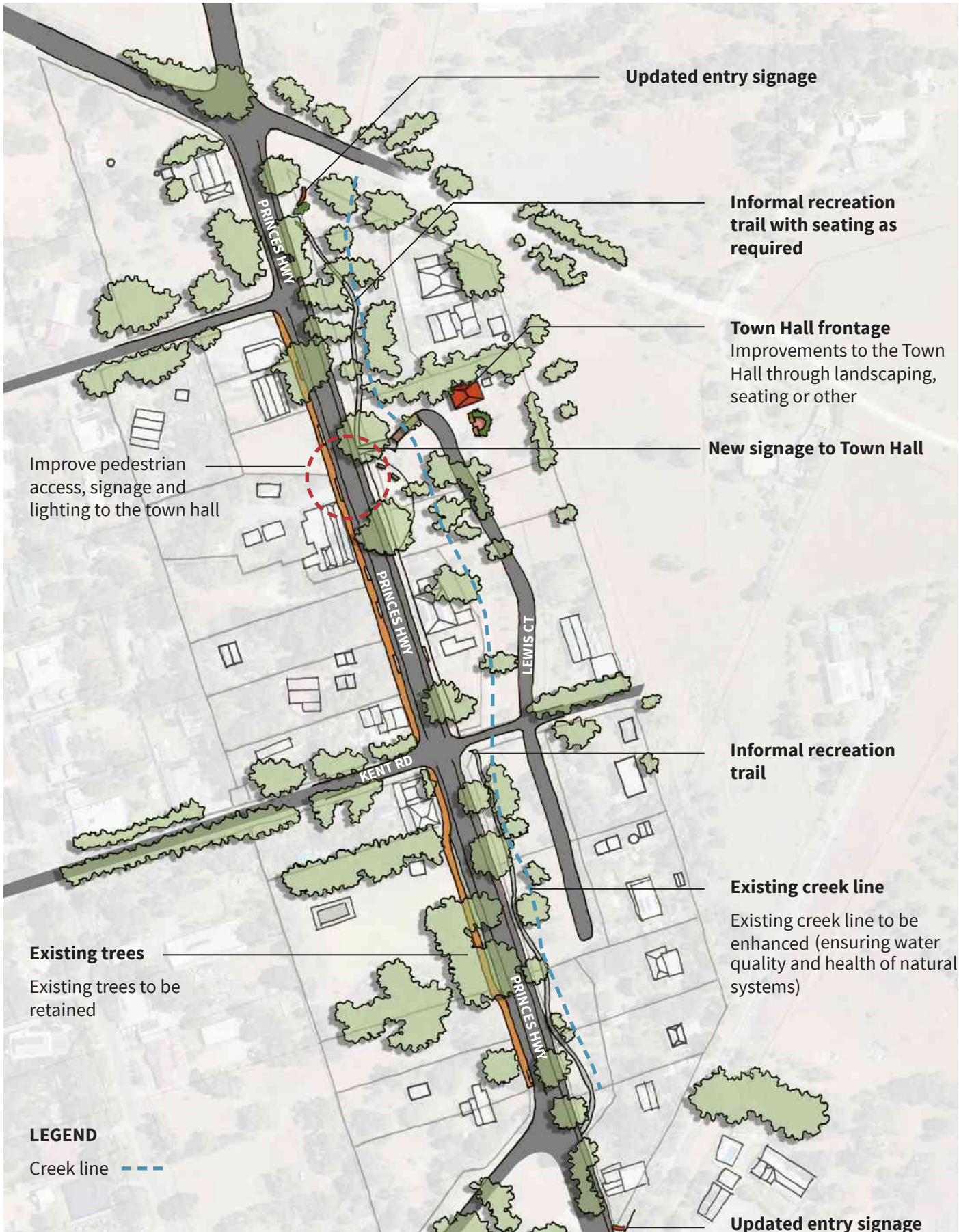
Due to the town's separation from the freeway, the Old Princes Highway takes a high level of traffic from proximate industrial uses. On this, the Main Street could benefit from an improved sense of arrival to calm traffic through appropriate street tree planting and greater Main Street activation, which could be through street furniture, pedestrian refuges or the like.

A creek, which drains to the Bremer River, runs just between this section of the Old Princes Highway and Lewis Court and has the potential to play a role in providing a space for recreation and amenity that could bring a higher level of use to the currently underutilised Kanmantoo Town Hall and connect to the town's prime recreational space at Hutton Reserve.

Actions

18. Improve the appearance of township entrances and approaches. Develop gateway treatments that reflect the local sense of place and act to calm traffic through the Main Street.
19. Support opportunities to increase activation and community use to the Main Street whether through private or commercial use, making sure to not detract from local heritage.
20. Informal recreation trail parallel to the Main Street, with landscaping treatments, street trees, lighting, street furniture and footpath surfaces being the key elements as per the concept plan.

Concept Plan



Updated entry signage

Informal recreation trail with seating as required

Town Hall frontage
Improvements to the Town Hall through landscaping, seating or other

New signage to Town Hall

Improve pedestrian access, signage and lighting to the town hall

Informal recreation trail

Existing creek line
Existing creek line to be enhanced (ensuring water quality and health of natural systems)

Existing trees
Existing trees to be retained

LEGEND
Creek line - - -

Updated entry signage

13 SUSTAINABILITY AND THE ENVIRONMENT



Prior to European settlement, there were significant areas of Peppermint Box woodlands, Open Tussock Grasslands (Iron grass) and Drooping Sheoak woodland. However, the landscape has been largely cleared of original native vegetation for mining, smelting (fuel) and farming activities.

Council's Biodiversity Plan 2020 outlines the extent of remaining vegetation. There are two nationally threatened ecological communities that remain in the Kanmantoo area, namely Irongrass (*Lomandra* species) Natural Temperate Grassland and Peppermint Box (*Eucalyptus odorata*) Grassy Woodland.

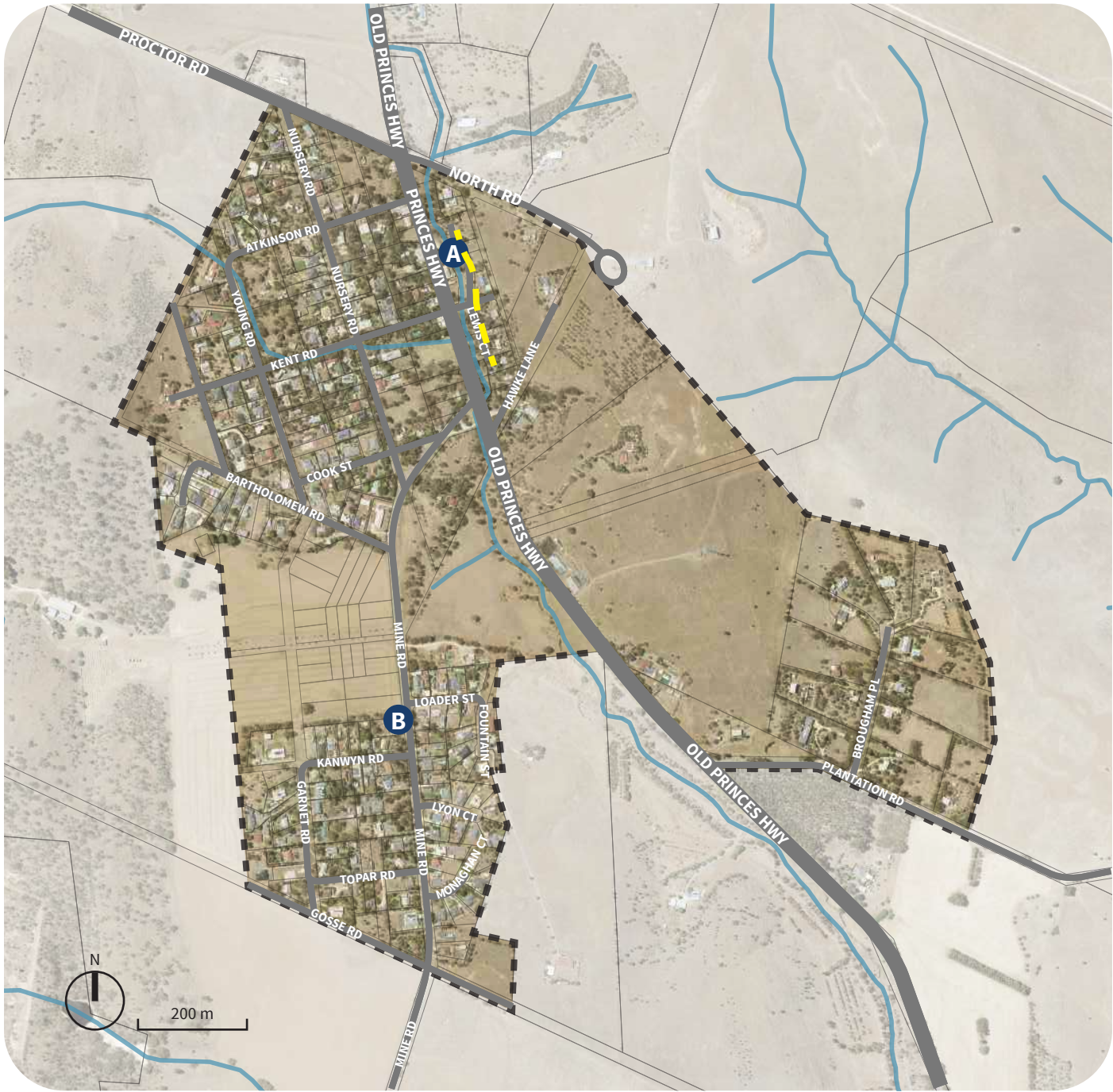
Most remnants of the Irongrass (*Lomandra effusa*) Open Tussock Grassland occur where underlying bedrock is exposed as outcropping stone and the soil profile is generally shallow. The presence of mature Irongrass tussocks generally indicates areas not previously disturbed by ploughing; such areas are important refuges for species sensitive to cultivation and fertilisers, such as orchids and soil-dwelling insects, spiders and reptiles (Threatened Species Scientific Committee, 2007).

Peppermint Box (*Eucalyptus odorata*) usually forms a distinct woodland community on rocky slopes in sandy loams, sandy clay-loams and clays. Peppermint Box Grassy Woodland has a sparse to dense tree over an open native grass and herb understorey with scattered shrubs. Many plants and animals of the ecological community are grassy habitat specialists or woodland-dependent species (Turner 2012).

Areas of these vegetation associations have been protected on the mining lease used by Hillgrove Resources. Additionally, Hillgrove Resources, as part of its mining lease, has collected local seed and extensively rehabilitated these areas.

Actions

21. Provide support for any community groups and/ or volunteers wishing to undertake environmental initiatives on public land such as re-vegetation, weeding and stabilisation/ erosion management on degraded landscapes in particular along the creek line. **A**
22. Revisit tree plantings along Mine Road to ensure appropriateness to the climate, giving consideration to aesthetics and management. **B**
23. Continue to work with Hillgrove Resources, Hanson and Neutrog to deliver environmental and amenity outcomes, and specifically as relate to interface issues such as dust suppression, odour, noise and vibration.



- X Specific proposal
- X General strategy
- Kanmantoo Township
- Watercourse
- Walking/interpretive trail



Existing creek along Lewis Court



Grassy woodland, Kanmantoo Reserve



Landcare Kanmantoo Callington

14 INFRASTRUCTURE



Water

Kanmantoo is serviced by an SA Water mains water supply but is not connected to any mains wastewater infrastructure.

Wastewater

Wastewater is managed within individual allotments by an appropriately sized on-site wastewater system. There is the potential to improve waste water management through the construction of a Community Waste Water Management System (CWMS) to service Kanmantoo though this would be a costly project and would most likely be driven by future growth.

Roads

Apart from the western side of the Main Street, streetscape infrastructure is limited within Kanmantoo with limited kerb and gutter or pedestrian footpaths through the town. Culverts and open swales are used in the town to manage stormwater. There could be a need to provide improved street infrastructure for better accessibility and stormwater management at strategic and well-used corridors such as the Old Princes Highway and Mine Road. There are opportunities to provide on street Water Sensitive Urban Design (WSUD) on wider streets such as the Old Princes Highway and Mine Road.

Telecommunication Services

Kanmantoo is currently serviced by the National Broadband Network (NBN) and is connected to mobile telephone networks. Community consultation did raise coverage as an issue across the township.

Electricity Supply

Kanmantoo is connected to SA Power Networks (SAPN) infrastructure and there are no known supply issues or required upgrades.

Emergency Services

The Country Fire Service (CFS) in Callington is located approximately 5 kilometres southeast of the township on the Old Princes Highway. Council will continue to liaise with the CFS regarding implementation of relevant Bushfire Management Plans and their existing facilities.

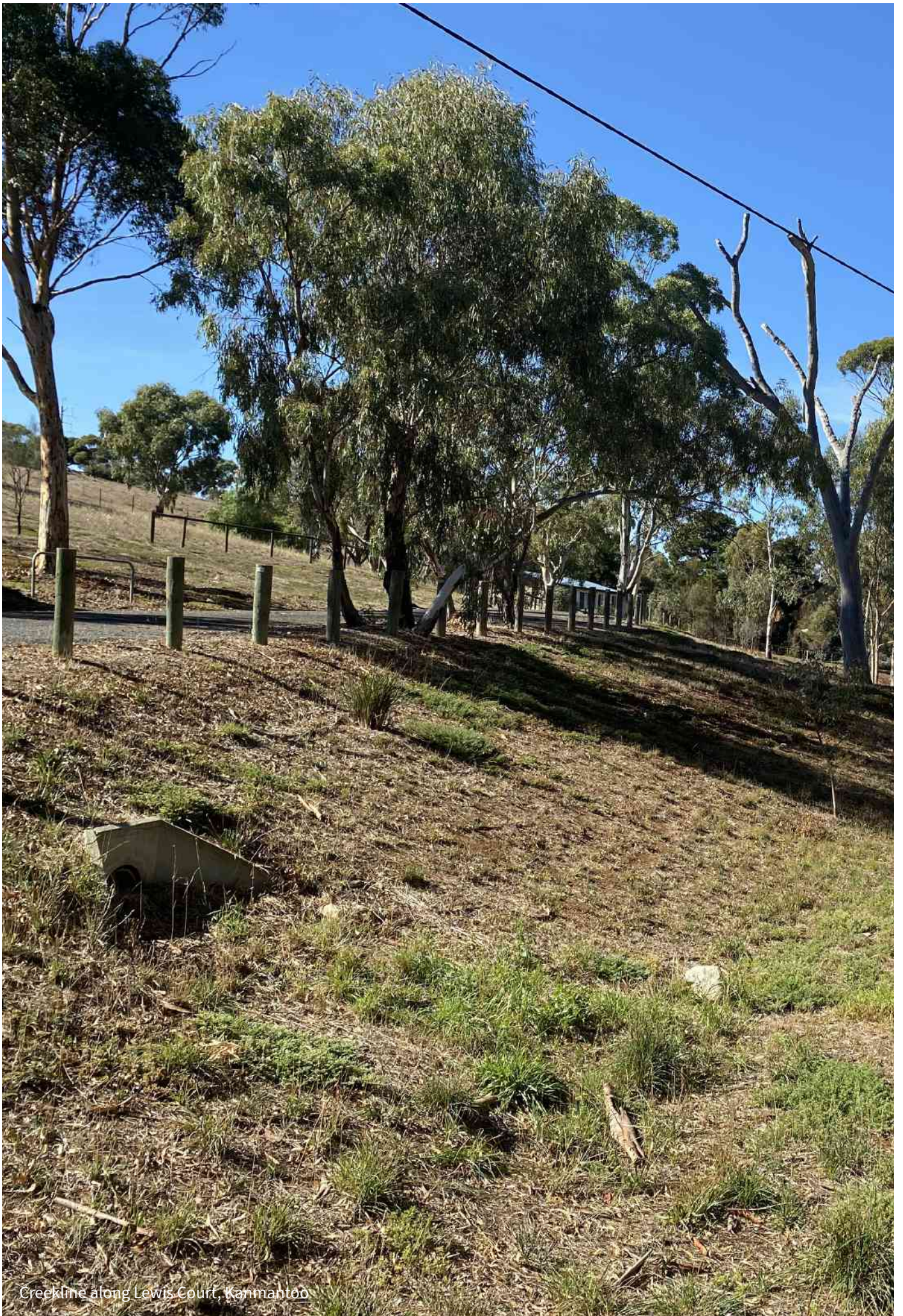
Flood mitigation

The presence of watercourses that traverse through a number of properties in the town, following Kent Road, Young Road and the main street for a section, coupled with its relatively flat and low lying nature mean that it can be vulnerable to flooding. This has the potential to impact on life and property and impede access for some parts of the town.

The township is due for a review of flood mapping and for possible further mitigation works to support this. Noting the many similarities across Kanmantoo and Callington, it is felt that a combined review could be undertaken across both townships. Both towns were heavily impacted by flooding in 1992 and are in need of updated mapping to properly assess risks to people, property, infrastructure and the environment. Any recommended works that may come from this work and act to minimise those risks will be part of a separate action to Council.

Actions

24. Undertake a review and update to flood mapping and flood plain extents for the Kanmantoo and Callington townships.
25. Work with the Local Government Association Community Wastewater Management System (CWMS) Management Committee to determine the priority of connection of Kanmantoo to a CWMS.
26. Council to advocate for improved telecommunications services.



Creekline along Lewis Court, Kanmantoo

15 IMPLEMENTATION PLAN

Actions are prioritised from high to low and ongoing. High priority actions will be implemented first followed by medium then low.

Action number	Action	Priority
Heritage, character and identity		
1	Ensure ongoing protection and enhancement of heritage places.	Ongoing
2	Celebrate the heritage and culture of the area through initiatives such as interpretive signage, public art installations and the materials chosen for public realm improvements. This should look to highlight events and/ or people of significance (including but not limited to the mining history to the town and the town's connection to David Unaipon) and include, when appropriate, collaboration with traditional owners in such acknowledgments and installations.	High
3	Ensure future residential development occurs within the existing town boundary.	Ongoing
Connected communities		
4	Continue the implementation of Council's Community Development Lead Strategy so that groups such as K4C and the Kanmantoo Grounds Committee are supported through a range of resources such as training and volunteering opportunities.	Ongoing
5	Support the community in establishing and maintaining a residents' association, should there be a push for the creation of such a group, to assist in coordination of works and activities through the town.	Ongoing
6	Continue to operate the Hills Community Transport (HCT) service, ensuring demand is monitored and service is adapted as needed.	Ongoing
Access and movement		
7	Advocate for improved public transport services and associated infrastructure for the township.	Ongoing
8	In line with Council's footpath program, complete sealed footpath connection from the northern end to the southern end of the town, linking the existing path along the Main Street to the property at 47 Mine Road (Lot 134), including improvements to the Mine Road/ Cook Street bus stop.	Low
9	Review access and connections as part of Council's new footpaths strategy to provide all weather access along the extent of Kent Road, Atkinson Road and Young Road.	Low
10	Investigate a cycling and walking trail between Kanmantoo and Callington away from the Old Princes Highway.	Low
11	Investigate opportunities to minimise the impacts from truck movements from nearby industrial land uses (i.e. Hanson, Hillgrove and Neutrog) through proper and open responses to complaints received in relation to trucks travelling through the town and in use of private roads that act to bypass the township.	Low
Open space and community facilities		
12	Through Council's existing 'Open Space and Trails Review and Update' (2023/24), ensure that Hutton Reserve is maintained as the town's primary reserve and consider additional open space/ trail facilities/ upgrades.	Ongoing
13	Improve useage of the community bike track facility through possible alternate designs or land uses, such as a nature reserve, off-leash dog park, private use or other.	Medium

Action number	Action	Priority
14	Work with the Kanmantoo Hall Committee to understand their long term needs with regard to access to the Town Hall and surrounding space for Anzac day and other occasions of community significance and in promoting the broader use of the Town Hall and surrounds through physical improvements such as toileting facilities, lighting, access, signage or other works.	Medium
Economic development, growth and tourism		
15	Partner with K4C to develop mining related tourism, taking advantage of equipment that Hillgrove Resources have such as walking trails, rehabilitation sites, historic buildings/ sites and/ or lookouts.	Ongoing
16	Work with new and established local businesses to improve opportunities and knowledge of grants and resources by linking them in with Council's Economic Development team for tailored advice.	Ongoing
17	Seek opportunities with prospective customers on the sale of recycled water on a commercial basis, achieving environmental, economic and social benefits to the community.	Ongoing
The Main Street		
18	Improve the appearance of township entrances and approaches. Develop gateway treatments that reflect the local sense of place and act to calm traffic through the Main Street.	High
19	Support opportunities to increase activation and community use to the Main Street whether through private or commercial use, making sure to not detract from local heritage.	Medium
20	Informal recreation trail parallel to the Main Street, with landscaping treatments, street trees, lighting, street furniture and footpath surfaces being the key elements as per the concept plan.	Low
Sustainability and the environment		
21	Provide support for any community groups and/ or volunteers wishing to undertake environmental initiatives on public land such as re-vegetation, weeding and stabilisation/ erosion management on degraded landscapes in particular along the creek line.	Ongoing
22	Revisit tree plantings along Mine Road to ensure appropriateness to the climate, giving consideration to aesthetics and management.	Low
23	Continue to work with Hillgrove Resources, Hanson and Neutrog to deliver environmental and amenity outcomes, and specifically as relate to interface issues such as dust suppression, odour, noise and vibration.	Ongoing
Infrastructure		
24	Undertake a review and update to flood mapping plans and flood plain extents for the Kanmantoo and Callington townships.	High
25	Work with the LGA CWMS Management Committee to determine the priority of connection of Kanmantoo to a Community Wastewater Management System (CWMS).	Low
26	Council to advocate for improved telecommunications services.	Ongoing



MOUNT BARKER
DISTRICT COUNCIL