

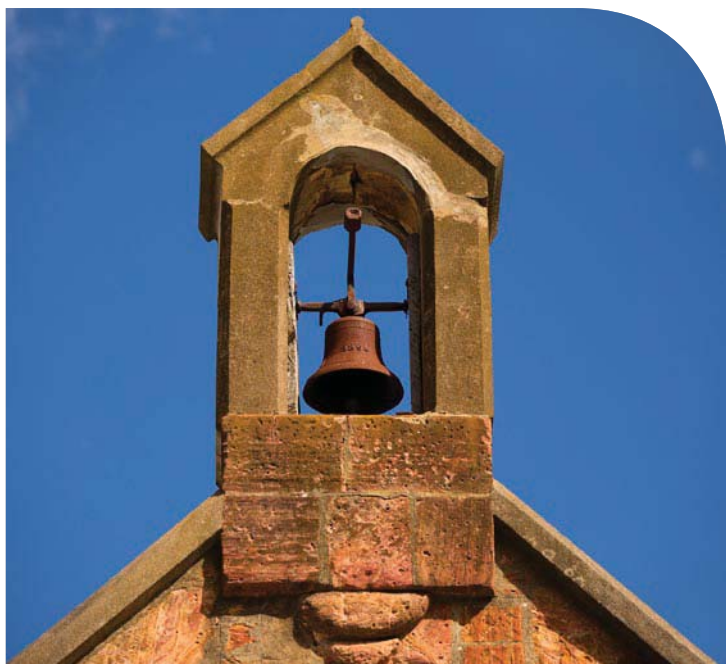
about:

FACT SHEET 11

OVERLAYS 1

HERITAGE

A planning overlay is a map in a Development Plan that shows the location and extent of an area subject to specific planning controls and policies that can be applied Council wide. They are found in the General Section of the Development Plan and are not related to zones or policy areas. In many cases they can cover multiple zones or policy areas.



HERITAGE OVERLAY

The current Mount Barker Development Plan has only one Overlay, the Heritage Overlay.

It identifies Local and State Heritage Places, (Historic Conservation) Areas and Contributory Items (located within (Historic Conservation) Areas).

Places, Items and Areas identified in the Heritage Overlay are subject to policies and controls in the:

- Development Regulations 2008
- Historic Conservation Area and Heritage modules, General Section, Mount Barker Development Plan.

Heritage controls allow the conservation of areas of historical, architectural or cultural significance for the broader community and future generations.

The DPA proposes to:

- Change the Gawler Street Area.
- Create a separate Kia-Ora Street Area.
- Reduce and rename the Hack Street Area as the Hack – Mill Street Area.
- Remove several properties from the heritage and contributory lists in the Hack – Mill Street Area.

Policies and strengthened Desired Character Statements have been introduced to the Hack-Mill Street Area to avoid inappropriate development including the creation of hammerhead allotments.

For further information please go to pages 6-8 (Attachments A & B) of the 'Amendment' and pages 21, 22, 24 & 27 of the 'Explanatory Statement'.

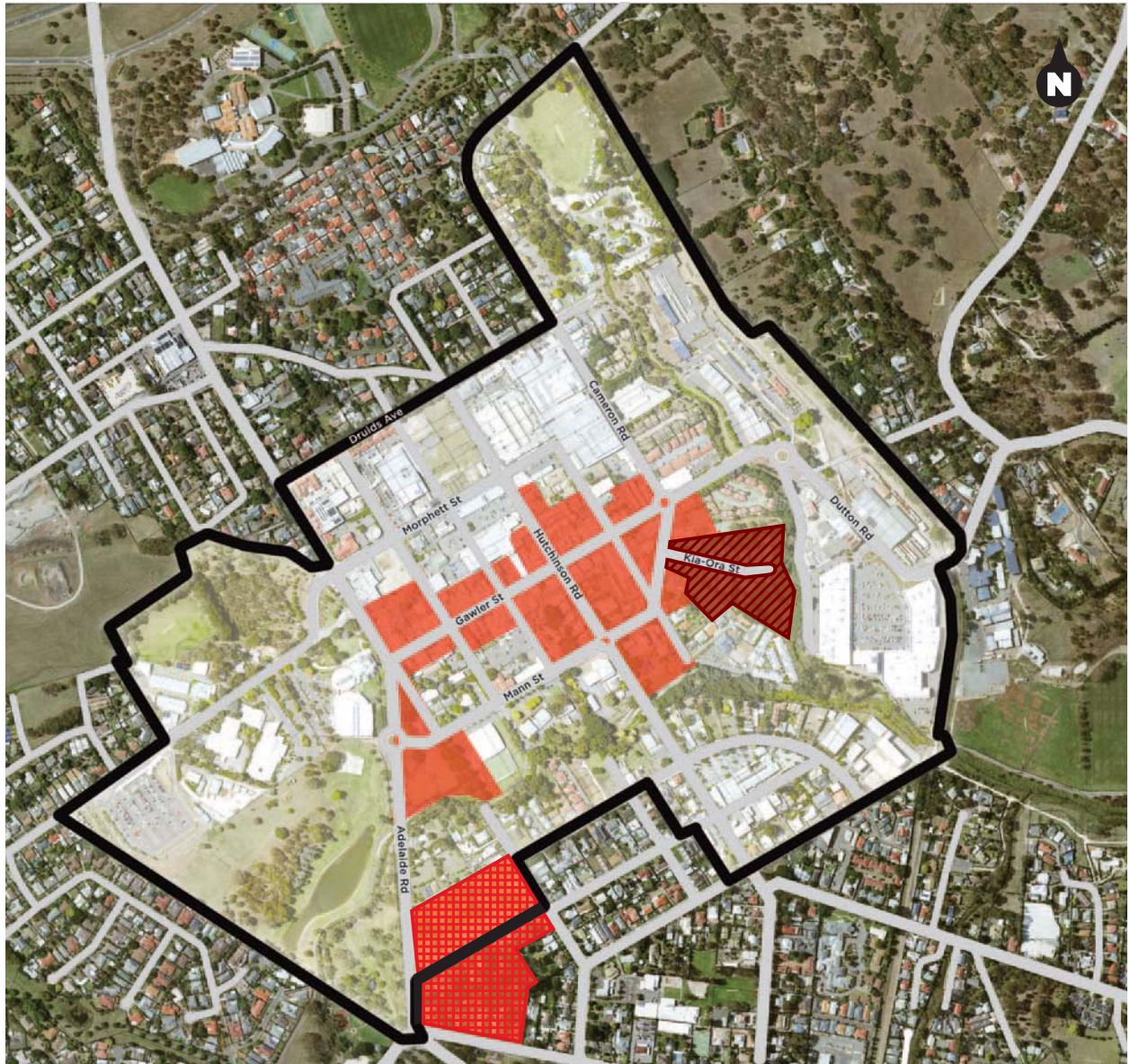
**HERITAGE
HAVE YOUR SAY**



about:

OVERLAYS 1

HERITAGE



HACK-MILL STREET



GAWLER STREET



KIA-ORA STREET

